

**PROVISION** **ISR**

*Now you can see!*



# **IP Series** (v4.0.2)

## CAMERA USER MANUAL

---

# **PROVISION-ISR**

All “S” Series IP Cameras

I1-390IPS36

DI-390IPS36

I1-330IPS36

DI-330IPS36

## **User Manual**

All rights reserved  
Provision-ISR®

# Notes on Safety

- Please refer to the technical specs to choose the correct power supply. Do not use power supply with higher/lower rating than specified.
- Do not attempt to disassemble the camera; in order to prevent electric shock, do not remove any screws or covers.
- There are no user-serviceable parts inside. Please contact the nearest service center as soon as possible if there is any technical failure.
- Avoid incorrect operation, shock vibration or heavy weight pressing which can damage to the camera.
- Do not use corrosive detergent to clean the camera. If necessary, please use a soft dry cloth to wipe dirt; for tough contamination, use neutral detergent. Any cleanser for high grade furniture is applicable.
- Avoid aiming the camera directly towards extremely bright objects such as the sun as it may damage the image sensor.
- Please follow the installation instructions of the camera
- Do not operate the camera in case temperature, humidity or power supply are exceeding the limited stipulations.
- Keep away from any heat sources such as radiators, heat registers, stoves, etc.
- Do not expose the product to the direct airflow of an air conditioner.
- When this product is in use, the relevant contents of Microsoft, Apple and Google will be involved in. The pictures and screenshots in this manual are only used to explain the usage of our product. The ownerships of trademarks, logos and other intellectual properties related to Microsoft, Apple and Google belong to the above-mentioned companies.
- All pictures and examples used in the manual are for reference only.

# Table of Contents

<b>1</b>	<b>Introduction .....</b>	<b>1</b>
<b>2</b>	<b>IE Remote Access.....</b>	<b>2</b>
2.1	LAN.....	2
2.1.1	Access through IP Manager Software .....	2
2.1.2	Directly Access through IE .....	4
2.2	WAN.....	6
<b>3</b>	<b>Remote Preview .....</b>	<b>8</b>
3.1	Remote Live-view Interface.....	8
<b>4</b>	<b>Remote Live Surveillance.....</b>	<b>9</b>
4.1	System Configuration .....	9
4.1.1	Basic Information.....	9
4.1.2	Date & Time.....	10
4.1.3	Local Configuration .....	10
4.2	Image Configuration .....	10
4.2.1	Display Configuration.....	10
4.2.2	Video Stream.....	12
4.2.3	OSD Configuration .....	13
4.2.4	Video Mask .....	13
4.2.5	ROI Configuration .....	14
4.3	Alarm Configuration.....	15
4.3.1	Motion Detection .....	15
4.3.2	Alarm Server .....	17
4.4	Network Configuration.....	17
4.4.1	TCP/IPv4.....	17
4.4.2	Port.....	18
4.4.3	Central Server (Auto Report Server).....	19
4.4.4	DDNS Configuration .....	19
4.4.5	SNMP.....	20
4.4.6	RTSP .....	21
4.4.7	UPNP .....	22
4.4.8	Mail configuration.....	22
4.4.9	FTP Setting .....	23
4.5	Security Configuration.....	23
4.5.1	User Configuration.....	23
4.5.2	Online Video User.....	25
4.5.3	Block and Allow List .....	25
4.6	Maintenance.....	26
4.6.1	Backup & Restore .....	26
4.6.2	Reboot Device.....	27
4.6.3	Upgrade.....	27
4.6.4	Log.....	27

**5 Search .....28**  
**Appendix.....29**  
**Appendix 1: Q & A .....29**

# 1 Introduction

## Main Camera Features:

- ICR auto switch - true day/night
- 3D DNR
- Digital WDR
- ROI coding
- Support Smart Phone/Tablet remote monitoring (Android and iOS platforms only)

## Surveillance Application



## 2 IE Remote Access

You may connect the IPC via LAN or WAN. This manual will use IE browser (6.0) for example:

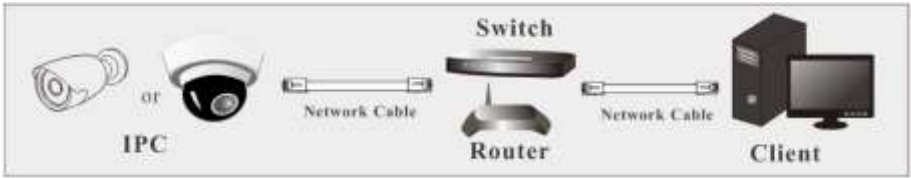
### 2.1 LAN

In LAN, there are two ways to access IPC:

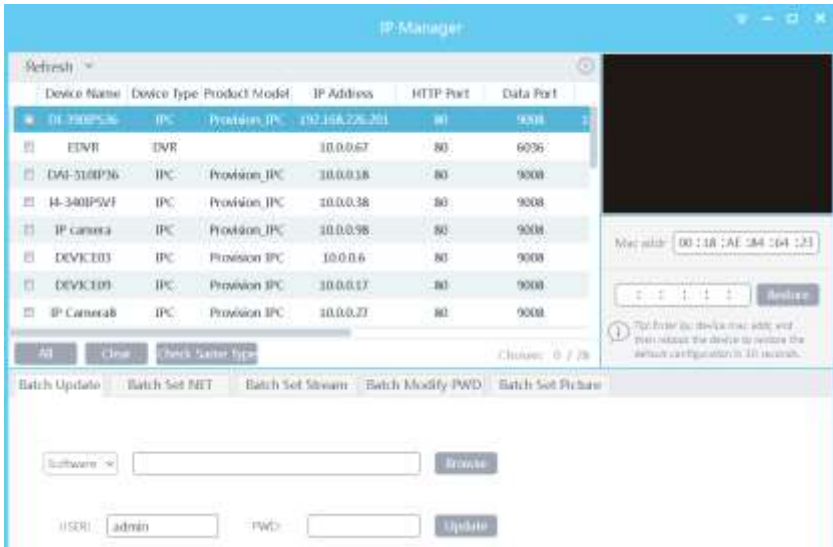
- 1) access through IP Manager Software
- 2) Directly access through IE browser.

#### 2.1.1 Access through IP Manager Software

Network connection:



- ① Make sure the PC and IPC are connected to the LAN and the IP Manager is installed in the PC from the CD or from Provision-ISR's website.
- ② Run the IP Manager on the designated PC:



③ Modify the IPC's IP address. The default IP address of this camera is 192.168.226.201. Click on the empty square to "tick" mark the desired IPC from the list (as seen in the below table). Click on "Batch set net" and input the desired parameters to modify the IP address, subnet mask and gateway of the camera and make sure the network address is in the same local network segment as the computer. You can change the IP address of more than 1 camera in one go by using the "batch set NET" action.



For example, the IP address of your computer is 192.168.1.4. So the IP address of the camera shall be changed to 192.168.1.X. After modification, please input the password of the administrator and click "Modify" button to modify the setting.



The default login credentials are "admin" & "123456".

④ Double click on the camera line and the IP manager will pop up the IE browser to automatically connect to the IPC. For the first use – you will have to install the camera ActiveX plugin. After downloading and installing the plugin, a login window will pop up as shown below.





Input the username and password to log in. If you input the wrong password for the first time, you shall wait for 10 seconds and then input the right password.



The default username is “*admin*”; the default password is “*123456*”.

### 2.1.2 Directly Access through IE

The default network settings are as shown below:

IP address: **192.168.226.201**

Subnet Mask: **255.255.255.0**

Gateway: **192.168.226.1**

HTTP: **80**

Data port: **9008**

You may use the above default settings when you log in the camera for the first time. You may directly connect the camera to the computer through network cable.



① Manually set the IP address of the PC. The network segment should be as the same as the default settings of the IP camera (192.168.226.x). Open the network and sharing center. Click “Local Area Connection” to pop up the following window.



Click on "Properties" and select internet protocol according to the actual situation (for example: IPv4). Next, click "Properties" button to set the network of the PC.



- ② Open the IE browser, input the default address of the IPC and confirm. For the first use – you will have to install the camera ActiveX plugin.
- ③ After downloading and installing the plugin, a login window will pop up as shown below.
- ④ Input the default username and password and then enter to view.

## 2.2 WAN

### > Access through the router or virtual server



① Make sure the camera is properly connected via LAN and then log in the camera via LAN. Go to Config→Network →Port menu and set the port values.

HTTP Port	<input type="text" value="80"/>
Data Port	<input type="text" value="9008"/>
RTSP Port	<input type="text" value="554"/>

② Go to Config →Network → TCP/IPv4 menu to modify the IP address. (Can be done via IP Manager tool as well)

IP Config	PPPoE Config	IP Change Notification Config
<input type="radio"/> Obtain an IP address automatically		
<input checked="" type="radio"/> Use the following IP address		
IP Address	<input type="text" value="192.168.1.201"/>	
Subnet Mask	<input type="text" value="255.255.255.0"/>	
Gateway	<input type="text" value="192.168.1.1"/>	
<input type="radio"/> Obtain DNS server address automatically		
<input checked="" type="radio"/> Use the following DNS server		
Preferred DNS Server	<input type="text" value="192.168.1.1"/>	
Alternate DNS Server	<input type="text" value="8.8.8.8"/>	

③ Go to the router's management interface through IE browser to forward the IP address and port of the camera in the "Virtual Server".

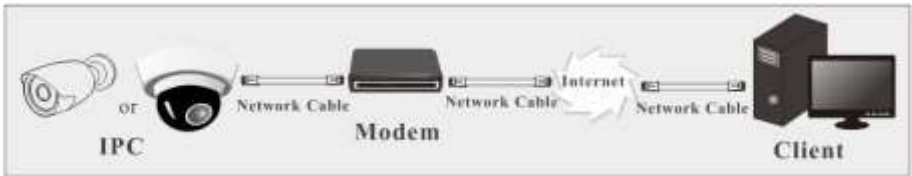
Port Range						
Application	Start	End	Protocol	IP Address	Enable	
1	9008	to 9008	Both	192.168.1.201	<input checked="" type="checkbox"/>	
2	80	to 80	Both	192.168.1.201	<input checked="" type="checkbox"/>	
3	10000	to 10001	Both	192.168.1.166	<input type="checkbox"/>	
4	21000	to 21001	Both	192.168.1.166	<input type="checkbox"/>	

### Router Setup

④ Open the IE browser and input its WAN IP and http port to access. (For example: 192.168.1.201:81)

#### ➤ Access through PPPoE dial-up

Network connection



You may access the camera through PPPoE auto dial-up. The setting steps are as follow:

- ① Go to Config → Network → Port menu to set the port number.
- ② Go to Config → Network → TCP/IPv4 → PPPoE Config menu. Check “Enable” and input the user name and password (Provided by your internet service provider).

The screenshot shows the configuration interface for PPPoE. At the top, there are three tabs: 'IP Config', 'PPPoE Config' (which is highlighted in red), and 'IP Change Notification Config'. Below the tabs, there is a section for 'Enable' with a checked checkbox. Underneath, there are two input fields: 'User Name' and 'Password', both of which are currently empty.

- ③ Go to Config → Network → DDNS menu. Before you configure the DDNS, please apply for a domain name first. Please refer to the DDNS Configuration for detailed information.
- ④ Open the IE browser and input the domain name and http port to access.

## ➤ Access through static IP

Network connection



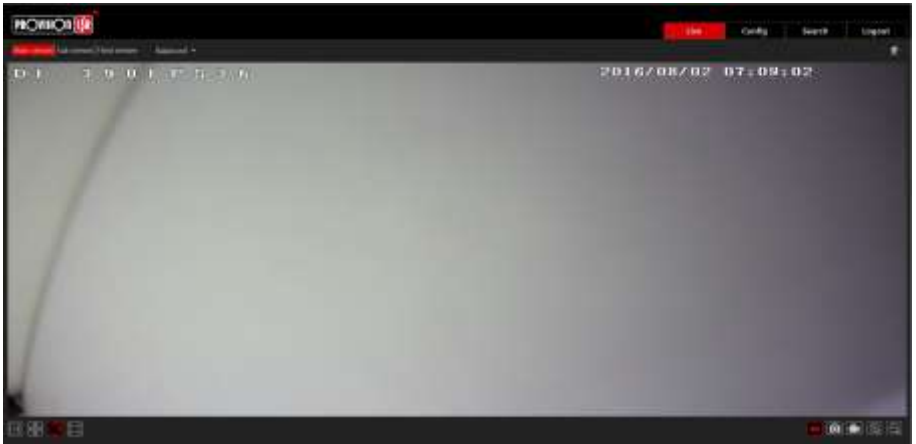
The setting steps are as follow:

- ① Go to Config→Network Config→Port menu to set the port values.
- ② Go to Config →Network Config→IP Address menu to set the IP address. (Can be done via IP Manager Tool as well). Check “Use the following IP address” and then input the static IP address and other parameters.
- ③ Open the IE browser and input its WAN IP and http port to access.








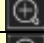


## 3 Remote Preview

### 3.1 Remote Live-view Interface

After you log in, you will see the following window.



The following table shows the interface's icon descriptions:

Icon	Description	Icon	Description
	Motion alarm indicator		Start/stop live view
	Original size		Snap
	Appropriate size		Start/stop record
	Auto		Digital zoom in
	Full screen		Digital zoom out

- When motion detection alarm is triggered, the motion icon will turn red.
- In full screen mode, right click is used to exit.

## 4 Remote Live Surveillance

### 4.1 System Configuration

The "System Configuration" holds three submenus: Basic Information, Date & Time and Local Configuration.

#### 4.1.1 Basic Information

Shows the IPC information including Hardware & Firmware versions and MAC address

Config Home > System > Basic Information	
Device Type	Provision_IPC
Brand	Provision_ISR
Software Version	4.0.2.0(5774)
Software Build Date	2016-07-04
Kernel Version	20160520
Hardware Version	1.3
Onvif Version	2.3
OCX Version	1.0.9.7
MAC	00:18:ac:84:64:23

## 4.1.2 Date & Time

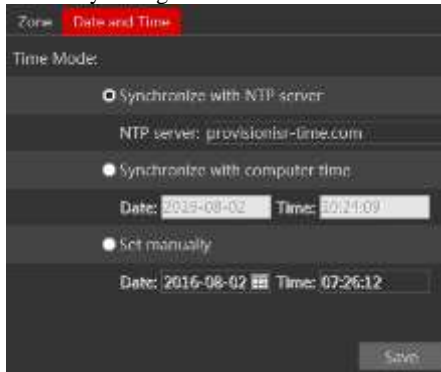
Go to Config→System→Date and Time.



You can select the time zone and DST as required.

Click “Date and Time” to set the time keeping mode out of 3 options:

- 1) Synchronize with NTP server – Time keeping by NTP.
- 2) Synchronize with computer time – the IPC will take the time from the computer system time.
- 3) Set manually: Manually configure time and date.



## 4.1.3 Local Configuration

Go to Config→System→Local Config. You can set the storage path of the captured pictures and video records.

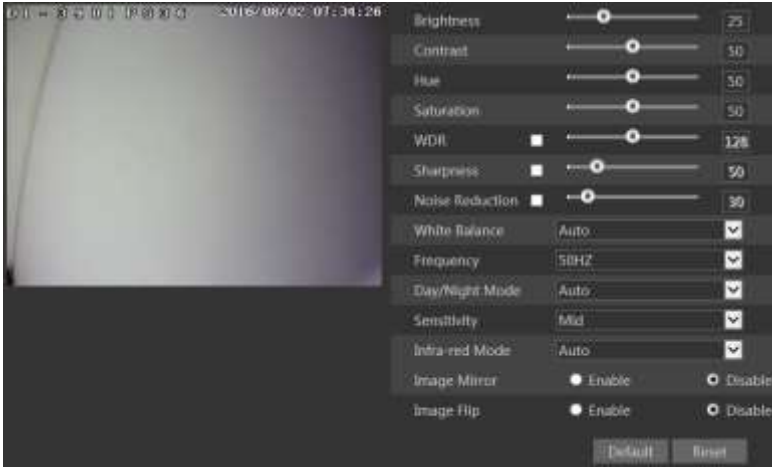


## 4.2 Image Configuration

Image Configuration includes five submenus: Display, Video/Audio, OSD, Video Mask and ROI Config.

### 4.2.1 Display Configuration

Many parameters of the camera can be set in display configuration interface such as brightness, contrast, Hue, saturation, WDR, DNR, Etc.



**Brightness:** Set the brightness level.

**Contrast:** Set the color difference between the brightest and darkest parts.

**Hue:** Set the total color degree of the image.

**Saturation:** Set the degree of color purity. The purer the color is, the livelier the image is.

**WDR:** Wide dynamic range brightens the dark areas and darkens the bright areas in order to provide a clear image without burnt pixels. When there are both very bright and very dark areas simultaneously in the field of view, WDR balances the brightness level of the whole image and provide clear images with details.

**Sharpness:** Set the sharpness levels of the image

**Noise Reduction:** Decrease the noise levels of the image. Increasing the value will increase the noise reduction effect but it will reduce the image resolution.

**White Balance:** Adjust the color temperature according to the environment.

**Frequency:** Choose 50HZ or 60HZ.

**Day/night Mode:** Choose the operation mode as needed.

**Sensitivity:** Relates to the Day/Night mode and will set the sensitivity to light before changing the work mode automatically.

**Infrared-Mode:** On – IR will be on. Off – IR will be off. Auto – The camera will decide of the IR LED status

**Image Mirror:** Reverse the video image horizontally.

**Image Flip:** Turn the video image vertically.



## 4.2.2 Video Stream

Click on Config→Image→Video/Audio.



In this interface, you can set the resolution, frame rate, bitrate type and video quality.

Three video streams can be adjustable.

**Resolution:** The higher the resolution is, the bigger the image is.

**Frame rate:** The higher the frame rate is, the more fluent the video will. However, more storage room and bandwidth will be required.

**Bitrate type:** Including CBR and VBR. CBR means that the video compression bitrate will always be kept constant. This will not only facilitate better image quality but will also help to calculate the capacity of the recording. VBR means that the compression bitrate can be adjustable according to the change of the video resources. This will help to optimize the network bandwidth.

**Video Quality:** If VBR is selected, you will need to choose image quality. The higher the image quality you choose, the more bitrate will be required.

**Bitrate:** Please choose it according to the actual network situation. The higher the bitrate – the better is the image quality (less compression)

**I Frame interval:** It is recommended to use the default value.

**Video encoding profile:** Baseline and main profile are available. Baseline profile is mainly used in interactive application with low complexity and delay. Main profile is mainly used for higher coding requirement.

**Stream of snapping photos:** Please set according to the requirement.

**Video encode slice split:** If enabled, you may get more fluency image even though using the low-performance PC, but this may result in poorer image quality

**Watermark:** If selected, you can input the watermark theme. You may check the watermark when playing back the local record in the search interface, lest the record files is tampered.

### 4.2.3 OSD Configuration

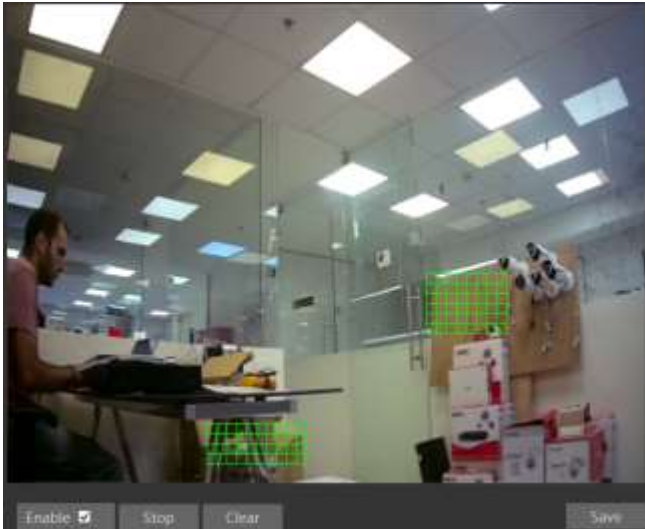
Go to Config→Image→OSD:



You may set the time stamp, device name and free OSD here. After enabling the desired display and entering the content, drag it on the live video to set their position. Press the “Save” button to save the settings.

### 4.2.4 Video Mask

Go to Config→Image→Video Mask. You can set 4 mask areas at most.



To set up video mask:

1. Open video mask settings.
2. Click “Draw Area” button and then drag the mouse to draw the video mask area.
3. Click “Save” button to save the settings.
4. Return to the live to see the following picture.



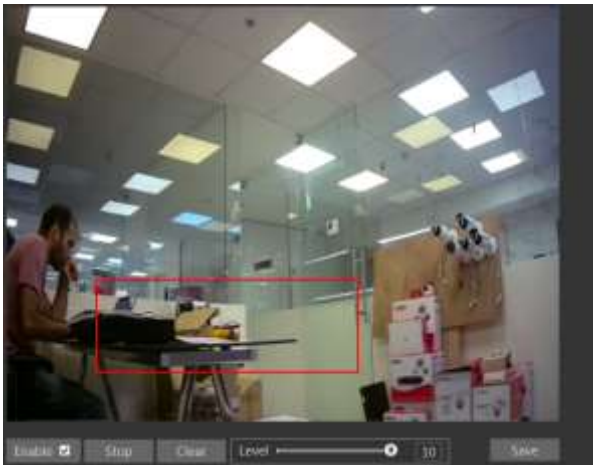
Clear the video mask:

Go to video mask menu and then click “Clear” button to delete the current video mask area.

#### 4.2.5 ROI Configuration

To set up ROI

1. Go to Video Config → ROI Config menu.



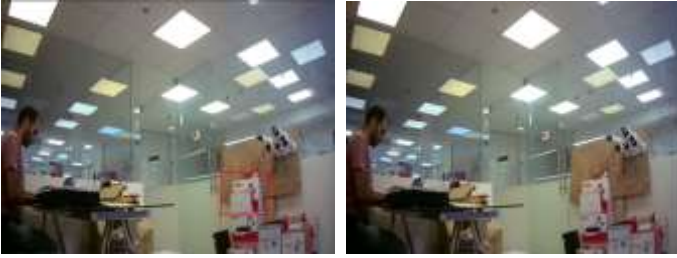
2. Check “Enable” and then click “Draw Area” button.

3. Drag the mouse to set the ROI area.

4. Set the level.

5. Click “Save” button to save the settings.

Now, you will see the selected ROI area is clearer than other areas especially in low bitrate condition.



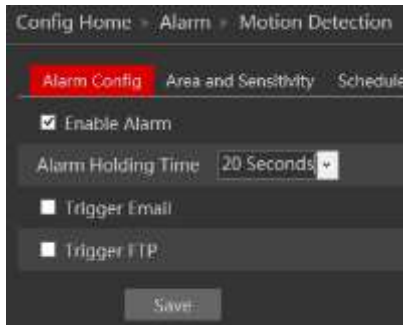
## 4.3 Alarm Configuration

Alarm configuration includes two submenus: Motion Detection and Alarm Server.

### 4.3.1 Motion Detection

To set motion detection:

1. Go to Config→Alarm→Motion Detection to set motion detection alarm.

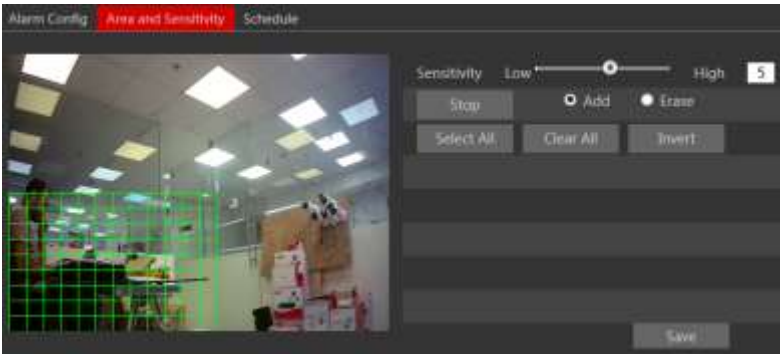


Mark “Enable Alarm” check box to activate motion based alarm. Choose alarm holding time and set alarm trigger options.

**Trigger Email:** Email address needs to be set first in the Mail config interface. The triggered snap pictures and event will be sent into those addresses.

**Trigger FTP:** The triggered snap pictures will be sent into FTP server address. Please refer to FTP configuration chapter for more details.

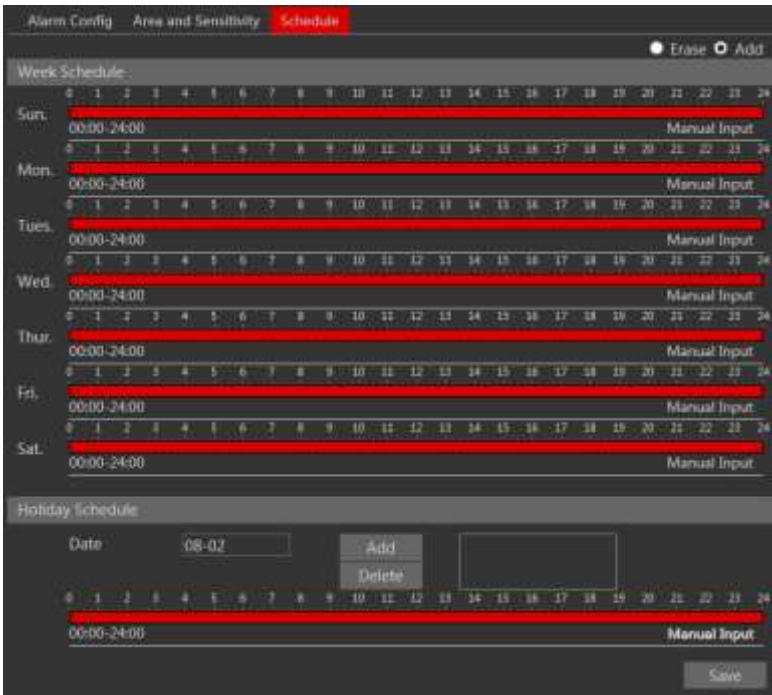
2. Set motion detection area and sensitivity. Click “Area and Sensitivity” tab to see the following sub-menu.



Move the “Sensitivity” scroll bar to set the sensitivity.

Select “Add” and click “Draw” button. Click and drag the mouse on the video area to mark the motion detection area; Select “Erase” and move the mouse to clear motion detection area. Click “Save” to save the settings.

3. Set the schedule of the motion detection. Click “Schedule” tab to set the schedule of the motion detection.



**Week schedule**

Set the alarm time for each day of the week. Each bar means one day of a week; full length means 24 hours. Red means selected area. Blank means unselected area.

“Add”: Add schedule markings.

“Erase”: Delete schedule markings.

**Holiday Schedule**

Set the date on the left and then click “add”. Add/erase schedule markings as described above

**Day schedule**

You can add holidays with special schedules.

Set the date and press “Add” button to add it to the box on the right, then move the scroll bar to set the schedule of that day.

Select a date in the list box on the right side, and press “Delete” to remove the schedule on that day.

Press the “Save” button to save the settings.

**Note: Holiday schedule have higher priority to Week schedule.**

**4.3.2 Alarm Server**

Not applicable for this model

**4.4 Network Configuration****4.4.1 TCP/IPv4**

Go to Config→Network→TCP/IPv4.

There are two ways for network connection.

The screenshot shows a configuration window with two tabs: "IP Config" (selected) and "IP Change Notification Config". Under "IP Config", there are two radio button options: "Obtain an IP address automatically" (unselected) and "Use the following IP address" (selected). Below these are input fields for:
 

- IP Address: 192.168.226.201
- Subnet Mask: 255.255.255.0
- Gateway: 192.168.226.1
- Preferred DNS Server: 192.168.226.1
- Alternate DNS Server: 8.8.8.8

 A "Save" button is located at the bottom right of the form.

- IP address: There are two options for IP setup – “Obtain an IP address automatically” (DHCP) or “use the following IP address” (Manual Input). Please choose one.

- Use PPPoE: Enter the user name and password provided by your ISP.

IP Config **PPPoE Config** IP Change Notification Config

Enable

User Name

Password

You can choose either of the network connection. If you use PPPoE to connect, you will get a dynamic WAN IP address. This IP address will change frequently. You may use the function of IP change notification.

IP Config **IP Change Notification Config**

Trigger Email

Trigger FTP

Trigger Email: when the IP address of the device is changed, a new IP address will be sent to the appointed mailbox automatically. (Email must be configured)

Trigger FTP: when the IP address of the device is changed, a new IP address will be sent to FTP server.

#### 4.4.2 Port

Go to Config→Network→Port. HTTP, Data and RTSP ports can be set.

HTTP Port

Data Port

RTSP Port

HTTP Port: The default HTTP port is 80. It can be changed to any port which is not occupied.

Data Port: The default data port is 9008. Can be changed if required.

RTSP Port: The default port is 554. Can be changed if required.

### 4.4.3 Central Server (Auto Report Server)

This function is mainly used for connecting to network video management systems.

<input checked="" type="checkbox"/> Enable	
Server Port	2009
Server Address	
Device ID	1

1. Check "Enable".
2. Check the IP address and port of the CMS's transfer media server. Enable the auto report in the CMS. Next, input the remaining information of the device in the CMS. The system will auto assign a device ID. Please check it in the CMS.
3. Input the above-mentioned server address, server port and device ID in the responding boxes. Click "Save" button to save the settings.

### 4.4.4 DDNS Configuration

If your camera is set to use PPPoE as its default network connection, DDNS should be set for network access. Before you set the DDNS, please make sure you have registered a domain name on the DDNS server.

1. Go to Config→Network→ DDNS.

<input checked="" type="checkbox"/> Enable	
Server Type	mintdns
Server Address	provision-isr-dns.com
User Name	install@gmail.com
Password	•••••
Domain	site.provision-isr-dns.com
Save	

2. Apply for a domain name. Take [www.dvrddns.com](http://www.dvrddns.com) for example. Input [www.dvrddns.com](http://www.dvrddns.com) in the IE address bar to visit its website. Then click "Registration" button.



Create domain name.

After you successfully request your domain name, you will see your domain in the list.

3. Input the username, password, domain you apply for in the DDNS configuration interface.
4. Click "Save" button to save the settings.

#### 4.4.5 SNMP

To get camera status, parameters and alarm information and remotely manage the camera, you can set the SNMP function. Before using the SNMP, please download the SNMP software and set the parameters of the SNMP, such as SNMP port, trap address.

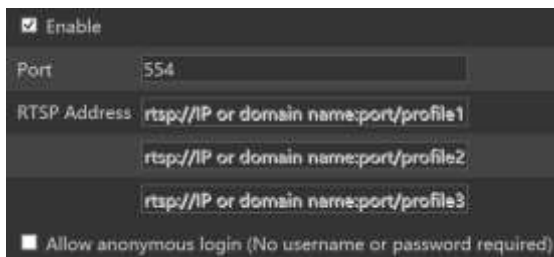
1. Go to Config→Network→SNMP.



2. Check the corresponding version checkbox (Enable SNMPv1, Enable SNMPv2, Enable SNMPv3) according to the version of the SNMP software you download.
  3. Set the “Read SNMP Community”, “Write SNMP Community”, “Trap Address”, “Trap Port” and so on. Please make sure the settings are the same as that of your SNMP software.
- Note:** Please use the different version in accordance with the security level you required. The higher the version is, the higher the level of the security is.

#### 4.4.6 RTSP

Go to Config→Network→RTSP.



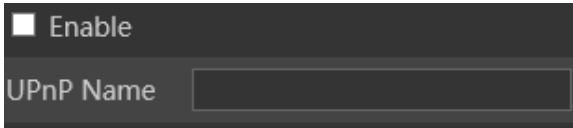
1. Select "Enable".
2. RTSP Port: Access port of the streaming media. The default number is 554.
3. RTSP Address: Showing the RTSP address you need to input in the media player.
4. Check "Allow anonymous login" to allow RTSP stream without authentication.

#### 4.4.7 UPNP

If you enable this function, you can quickly access the camera via LAN and you don't need to configure port mapping when the camera is connected to the WAN via the router.

Go to Config→Network→UPnP:

Select "Enable UPnP" and then input friendly name.

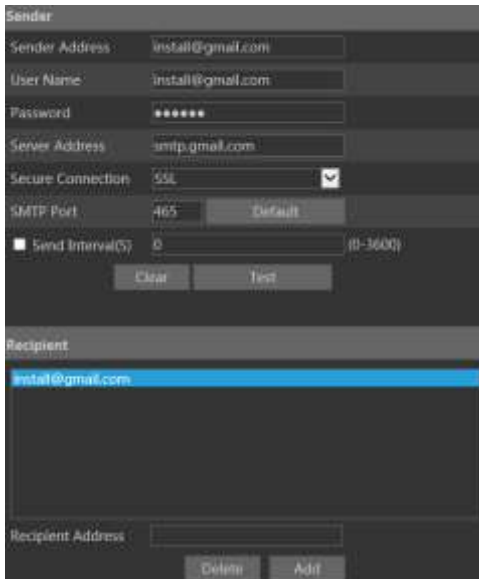


After you enable it and set the UPnP name, you will see the UPnP name by clicking "Network" on the desktop of your computer which is in the same local area network. Then double click this name to access the camera quickly.

#### 4.4.8 Mail configuration

If you need to trigger E-mail when an alarm occur or if the IP address was changed, please set the E-mail here first.

Go to Config→Network → Email.



Sender Address: sender's e-mail address;

User name and password: sender's user name and password;

SMTP Address: The SMTP IP address or host name.

Select the secure connection type at the pull down list according to the mail server configuration.

SMTP Port: The SMTP port.

Send Intervals: Set it as needed.

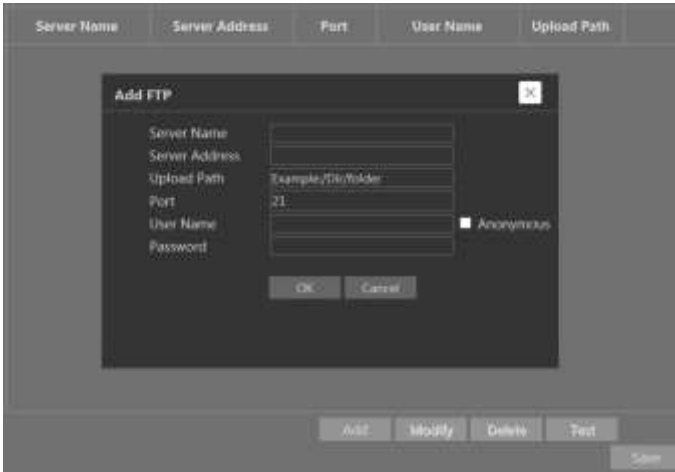
Click "Test Account Setting" to test the account.

Receiver email address: receiver's e-mail address;

#### 4.4.9 FTP Setting

After setting the FTP server, the captured pictures of any alarm will be uploaded to the FTP server.

Go to Config→Network →FTP.



To Add FTP:

Server Name: The name of the FTP.

Server Address: The IP address or domain name of the FTP.

Upload Path: The path of uploading the files.

Port: The port of the FTP.

User Name and Password: The username and password are used to login the FTP.

## 4.5 Security Configuration

### 4.5.1 User Configuration

Go to Config→Security.

Index	User Name	User Type	Bind MAC
1	admin	Administrator	

**Add user:**

1. Click "Add" button to open the following box.

**Add User**
✕

User Name

Password

Confirm Password

User Type Administrator ▼

Bind MAC

2. Input user name in "User Name" box.
3. Input letters and/or numbers in "Password" and "Confirm Password" textbox.
4. Choose the user type.
5. Input the MAC address of the PC in "Binding MAC address" textbox in case needed. After binding physical address to the IPC, you can access the device using this PC only. If the MAC address is "00:00:00:00:00:00" it means that the IPC can be connected to by any computer.
6. Click "OK" button and the newly added user will displayed in the user list.

**Modify user:**

1. Select the user you wish to modify from the user configuration list box.
2. Click on the "Modify" button.

**Edit User** [X]

Modify Password

User Name: admin

Old Password: [ ]

New Password: [ ]

Confirm Password: [ ]

Bind MAC: 00:00:00:00:00:00

OK Cancel

3. Input old password.
4. Input new password in the “New password” and “Confirm Password” text boxes.
5. Mark “Bind MAC” and input the computer’s MAC address if required.
6. Click “OK” button to modify user’s password.

#### Delete user:

1. Select the user you want to delete in the user configuration list box.
2. Click “Delete” button to delete the user.

**Note:** The default super administrator cannot be deleted.

### 4.5.2 Online Video User

Go to Config→Security→Online User. You can view the users who are currently connected to the camera.

### 4.5.3 Block and Allow List

Go to Config→Security→Block and Allow Lists.



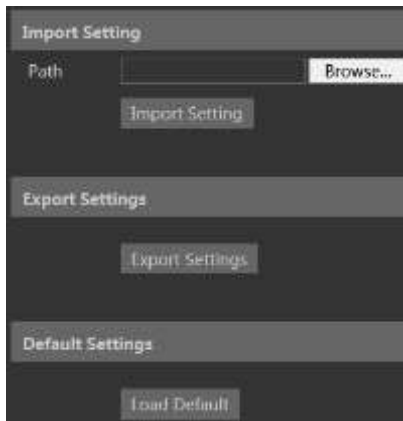
Setting steps are as follows:

- 1) Check "Enable IP address filtering" check box.
- 2) Select "Block/Allow the following IP address" as desired, input the IP address in the IP address list box and click "Add" button.
- 3) After you set the IP address or MAC address, the system will block or allow the user as specified.

## 4.6 Maintenance

### 4.6.1 Backup & Restore

Go to Config→Maintenance→Backup & Restore.



### ● Import & Export Setting:

You can import or export the setting information from PC or to device.

1. Click "Browse" to select save path for import or export information on PC.
2. Click "Import Setting" or "Export Setting" button.

### ● Default Setting

Click "Load default" button to restore all system settings to factory settings.

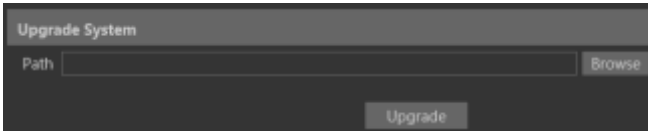
## 4.6.2 Reboot Device

Go to Config→Maintenance→Reboot.

Click "Reboot" button to reboot the device.

## 4.6.3 Upgrade

Go to Config→Maintenance→Upgrade. In this interface, you can upgrade the system.



1. Click "Browse" button to select the save path of the upgrade file.
2. Click "Upgrade" button to start upgrading the application program.
3. The device will restart automatically.
4. After you have successfully updated the software, click "OK" button to close IE and then re-open IE to connect.

Caution! Do not disconnect the PC or the IPC during the upgrade process.

## 4.6.4 Log

To query and export log

1. Go to Config→Maintenance→Operation Log.

Index	Time	Main Type	Sub Type	User Name	Login IP
1	2016-06-02 08:04:54	Operation	Network notify		8.8.8.0
2	2016-06-02 08:05:10	Operation	Log out	admin	10.0.0.237
3	2016-06-02 08:18:56	Operation	Log in	admin	10.0.0.237
4	2016-06-02 08:17:26	Operation	Log out	admin	10.0.0.237

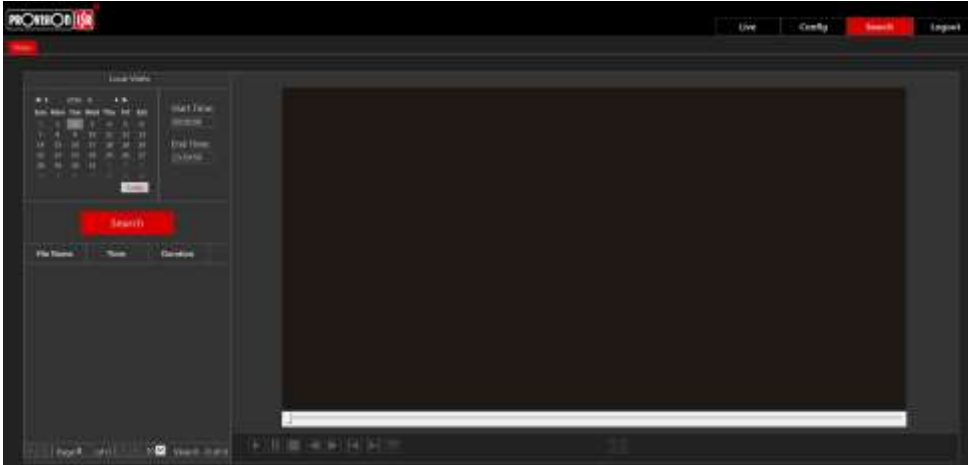
2. Select the main type, sub type, start and end time.
3. Click "Query" to view the operation log.
4. Click "Export" to export the operation log.

You can export and view the run log by clicking Config→Maintenance→Run Log.









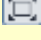
## 5 Search

You can play the local video record through the search interface. Before playing, please set the storage path of the video record in the local configuration interface and make sure there are record files. After that, click “Search” tab on the menu toolbar.



Choose the date and the start time and end time and then click “Search” button to search the record files. Double click the record file to play the record.

The descriptions of the buttons on the playback interface are as follows.

Button	Description
	Play button. After pausing the video, click this button to continue playing.
	Pause button.
	Stop button.
	Speed down.
	Speed up.
	Enable/Diable watermark.
	Full screen. Click it to display full screen. Double click to exit full screen.

# Appendix

## Appendix 1: Q & A

### Q: How to recover my password if I forget it?

A: Reset the device to the default factory settings by using the IP Manager Tool.

Default IP: 192.168.226.201

User name: admin

Password: 123456

### Q: I fail to connect through IE browser, why?

A: Network is not well connected. Please check the connection and make sure it is connected well.

B: IP is not available. Change settings to valid IP.

C: Web port has been revised: contact administrator to get the correct port number.

D: Exclude the above reasons. Recover default setting by IP Manager Tool.

Note: Default IP: 192.168.226.201, mask number: 255.255.255.0

### Q : IP tool cannot search devices, why?

A: It may be caused by anti-virus or firewall software in your computer. Please disable it and try to search again.

### Q : IE cannot download ActiveX control. How can I do?

a. IE browser blocks ActiveX. Please try as below.

① Open IE browser. Click Tools-----Internet Options....



② Select Security-----Custom Level....

③ Enable all the sub options under "ActiveX controls and plug-ins".



④ Click OK to finish setup.

b. Other plug-ins or anti-virus blocks ActiveX. Please disable it and try again.