

eneo-Site-Manager User Guide Vers. 3.0.8



1. Introduction

The eneo Site Manager (ESM) # 218218 is a service and configuration software developed for the eneo IP camera series. This allows a quick retrieval of the eneo network cameras located in the local network. The ESM offers the full range of functions for the eneo Economy, Economy Plus and Premium camera series. The range of functions is restricted for the conventional PXB, PXC, PXD and PTB series. Only the basic functions are available here. The historic eneo G series is no longer supported. For the limited and no longer supported cameras, the eneo Scan Device (ESD) # 210144 is still available. You can find it on the www.eneo-security.com Web site for download.

The ESM software is packed as a ZIP compressed file package. This can be uncompressed in a directory of your choice. All necessary files and directories are created independently. After unpacking, simply drag the file "eneoSiteManager.exe" into the start bar of your Windows PC. After opening the application for the first time, you can also "pin" it on the start bar. This simplifies the next calls of the ESM. You need only one mouse click at a time.

2. Start the ESM

The ESM is started with a mouse click in the Windows start bar. A welcome screen appears briefly. This is displayed for approx. 3 seconds. During this process, cameras are searched for in the local network in the background. As a rule, all cameras are available in a list when switching from the welcome screen to the main window. Depending on the number of existing cameras and after network traffic, the list in the main window is supplemented with additional cameras.

3. Main Window

View of the main window:

The screenshot shows the main window of the eneo Site Manager Vers. 3.0.800. The window has a title bar with the application name and version, and standard Windows window controls. Below the title bar is a menu bar with 'Application', 'Tools', 'Camera Status', and 'Info'. The main area is divided into two sections. The left section contains a table with columns: Camera Name, IP -Address, Mac-Address, Firmware Version, Camera Status, and Up / Down Load Status. The right section contains a 'Control Menu' with buttons for 'Open Web Browser', 'Open Picture', 'Camera Restart', 'Camera Default', 'Camera Factory', 'Save Cam. Config', 'Load Cam. Config', 'Change IP [Multi]', and 'FirmwareUpdate'. At the bottom of the window, there is a status bar that says 'Camera(s) found -> 8'.

Camera Name	IP -Address	Mac-Address	Firmware Version	Camera Status	Up / Down Load Status
> IPB-73M2812M0A	192.168.0.110	78:C2:C0:20:01:48	R1.04-RC6		
> NXB-980IR3516M	192.168.0.103	00:07:D8:17:B5:71	1.6.4-T8_release		
> NUX-6313R	192.168.0.106	00:07:D8:19:4F:C8	1.3.74-XE_release		
> NXC-1301M	192.168.0.220	00:07:D8:02:D0:45	2.2.80		
> NXB-980IR37M	192.168.0.111	00:07:D8:18:76:66	1.5.3-T8_release		
> PXB-2080Z03	192.168.0.22	00:30:6F:84:2E:C9	4.25-300-ds		
> PXB-2080Z03	192.168.0.101	00:30:6F:84:5D:FE	4.25-301-ds		
> PXD-2080Z03	192.168.0.23	00:30:6F:84:B4:51	4.25-300-ds		

Control Menu

- Open Web Browser
- Open Picture
- Camera Restart
- Camera Default
- Camera Factory
- Save Cam. Config
- Load Cam. Config
- Change IP [Multi]
- FirmwareUpdate

192.168.0.109

Camera(s) found -> 8

4. Select and start the individual function (general)

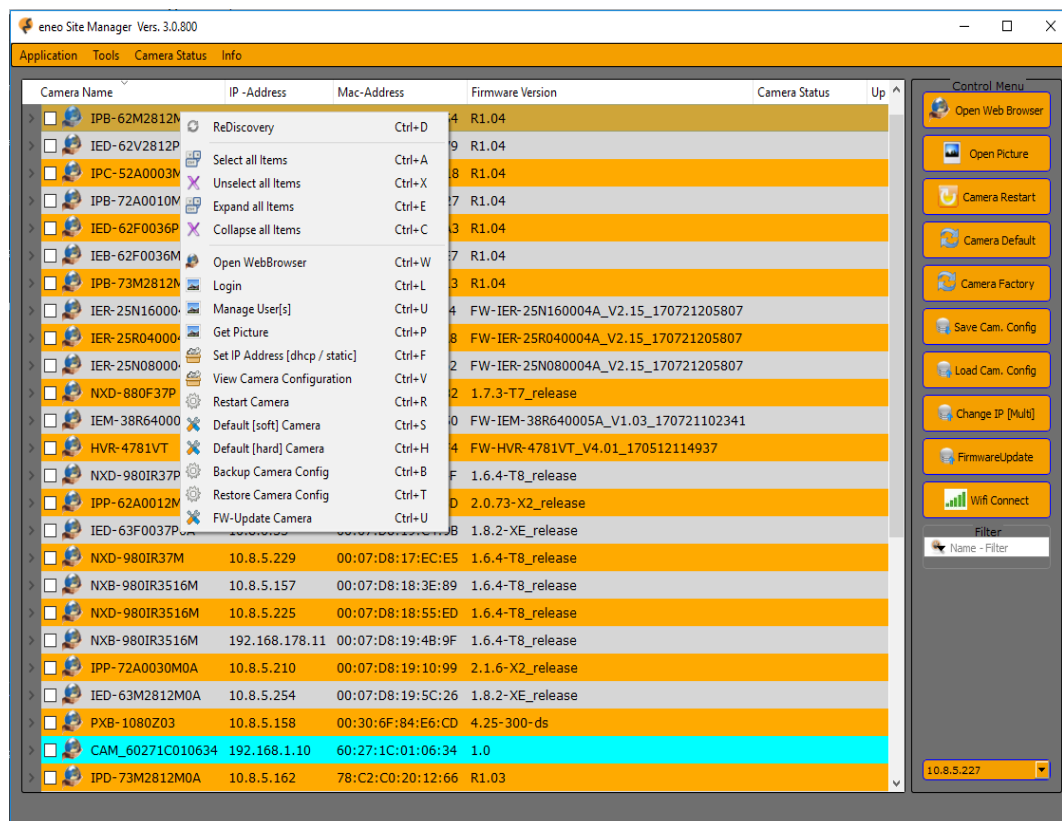
If only one camera is to be configured or tested, it is sufficient to move the mouse pointer to the corresponding camera. The context menu can then be opened with the right mouse button. All available functions now appear.

Now the desired function can be selected and started with a simple mouse click.

If several cameras are to be configured and tested directly and at the same time, mark the corresponding cameras with the "click field" (hook) available on the left side. Now simply open the context menu with the right mouse button and proceed the same way, as with the camera single selection.

Alternatively, the controls on the right side can be used to start the functions. The elements become active when one or more cameras are selected.

View of the main window with the context menu open:



5. Description of the individual function:

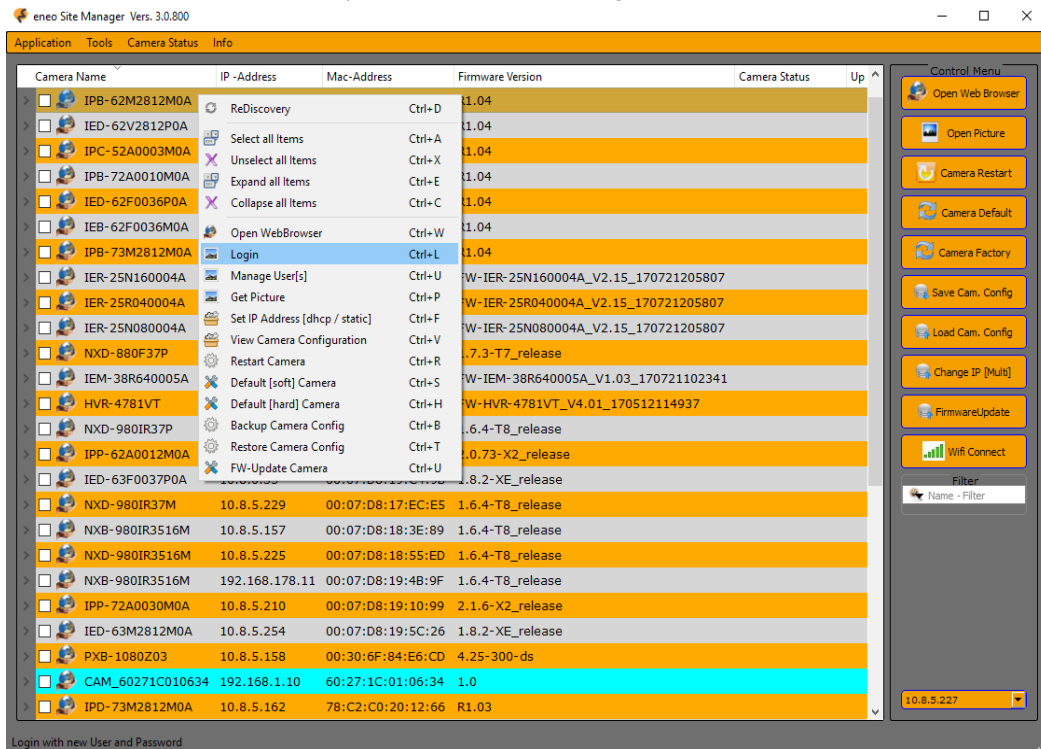
- Open the cameras with the web browser

The camera can be opened directly from the ESM using the web browser. Simply click on the menu item in the context menu "Open WebBrowser".

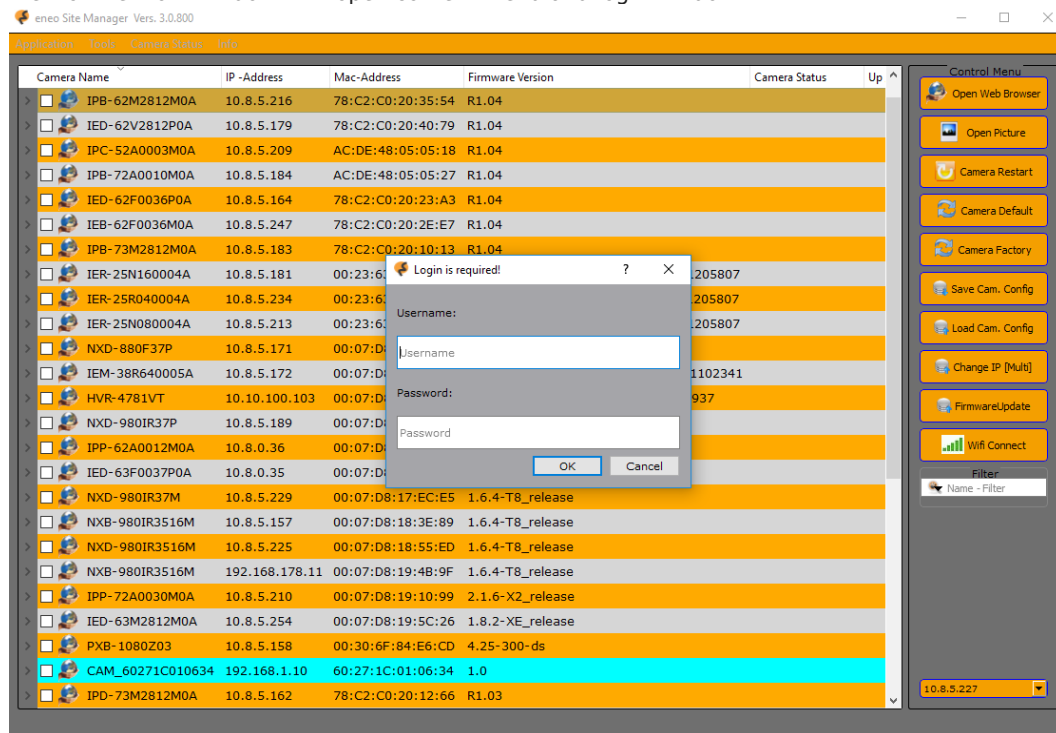
- Login function for deviating camera access data

If the cameras have already been modified in their access data, you can enter the new data in the login window. These are then used either for individual cameras or for all selected cameras.

View of the main window with open context menu and login selection:



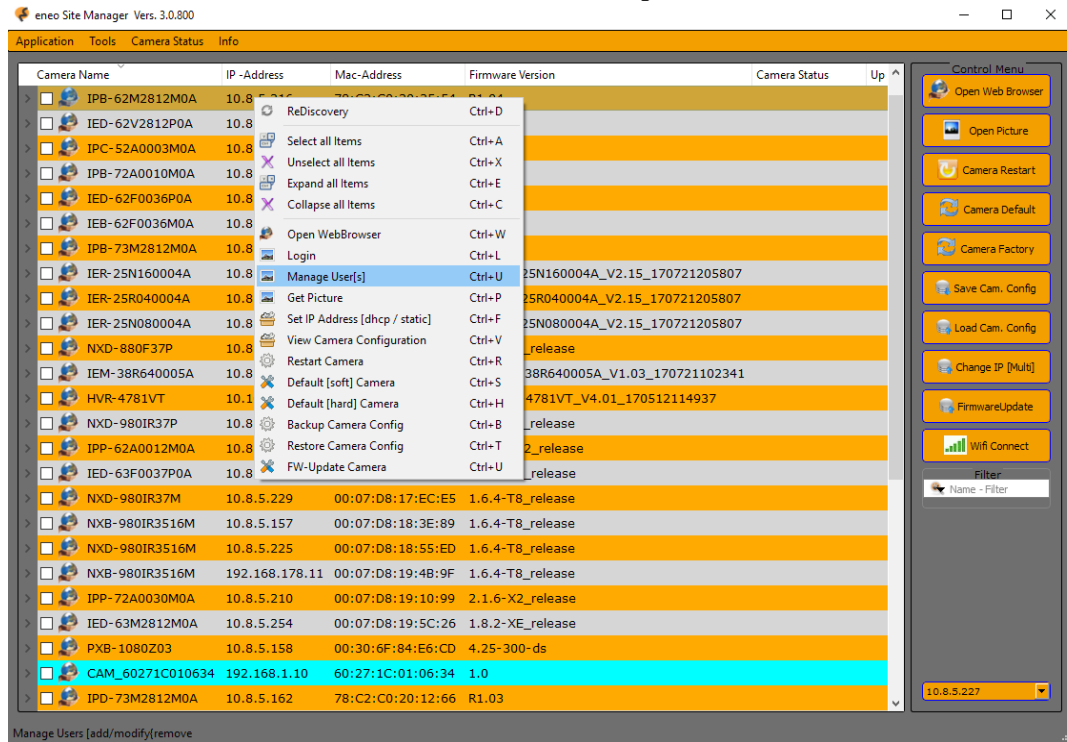
View of the main window with open context menu and login window:



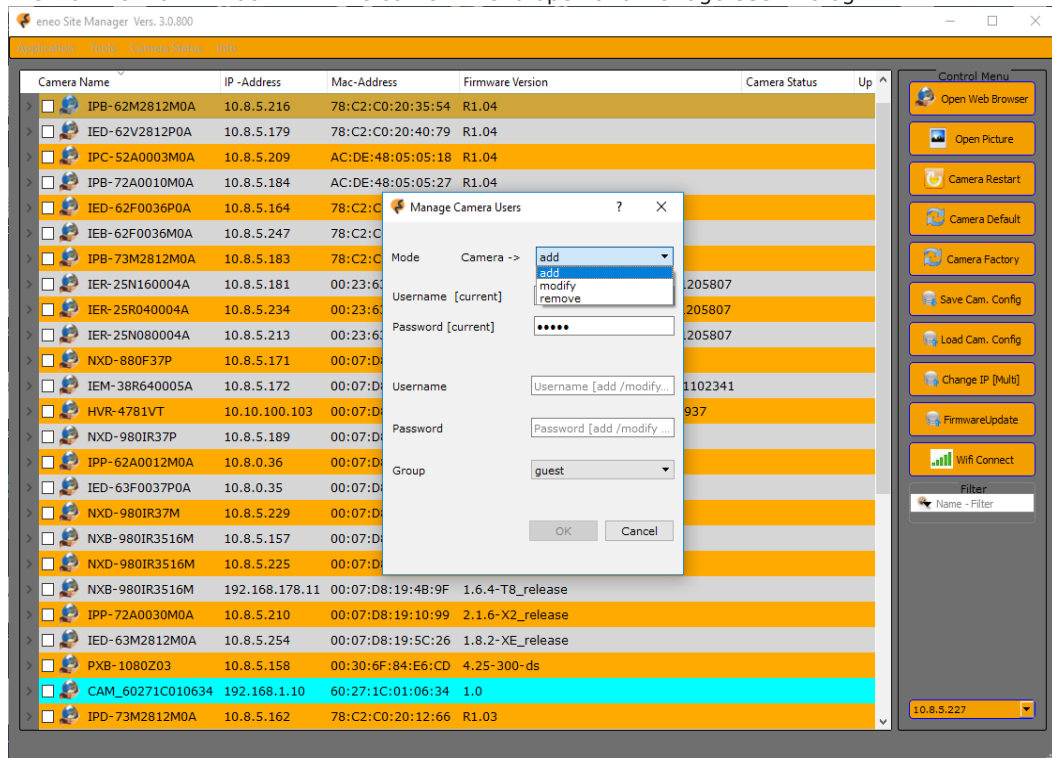
– Edit users of the cameras

You can create new users, edit existing users, or delete users for individual or all selected cameras. Important is that the user executing here acts as "admin" on the cameras.

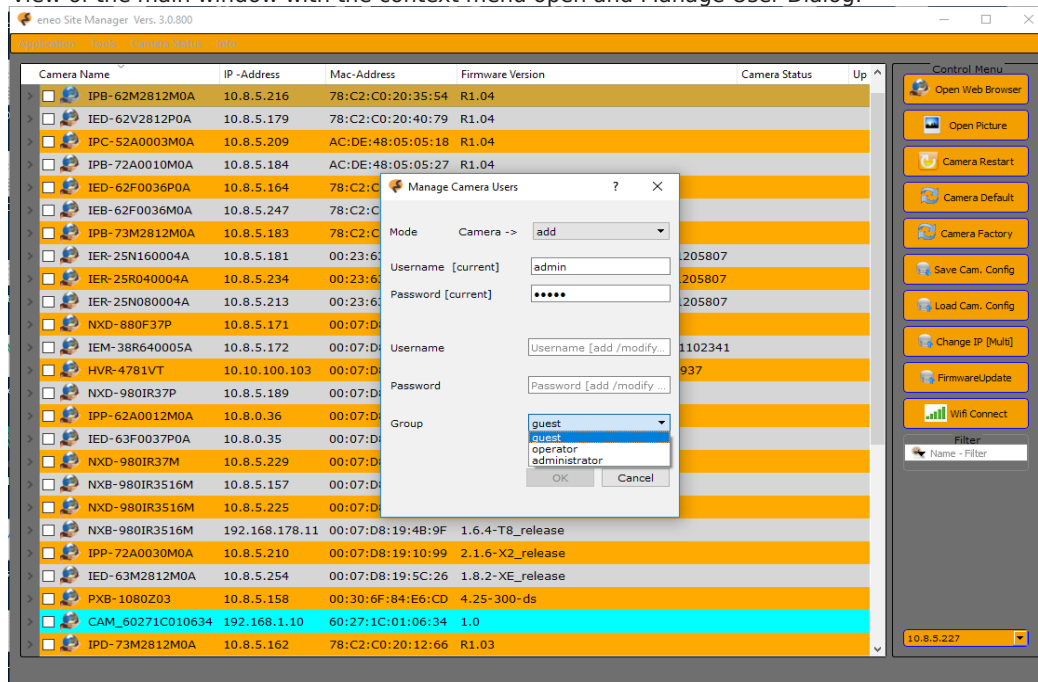
View of the main window with the context menu and manage user selected:



View of the main window with the context menu open and Manage User Dialog:



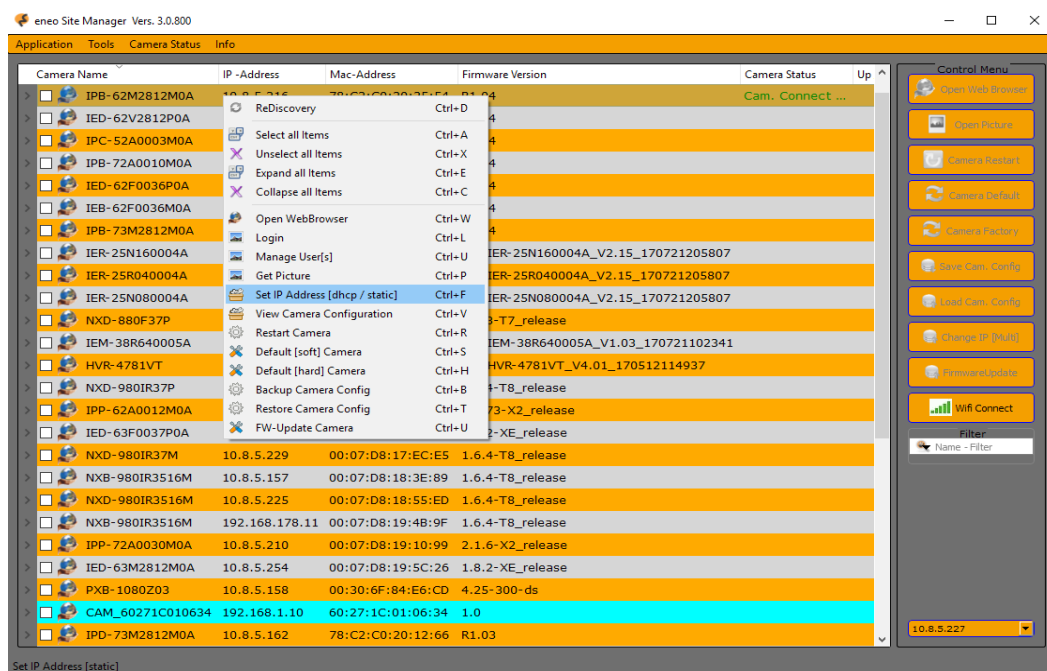
View of the main window with the context menu open and Manage User Dialog:



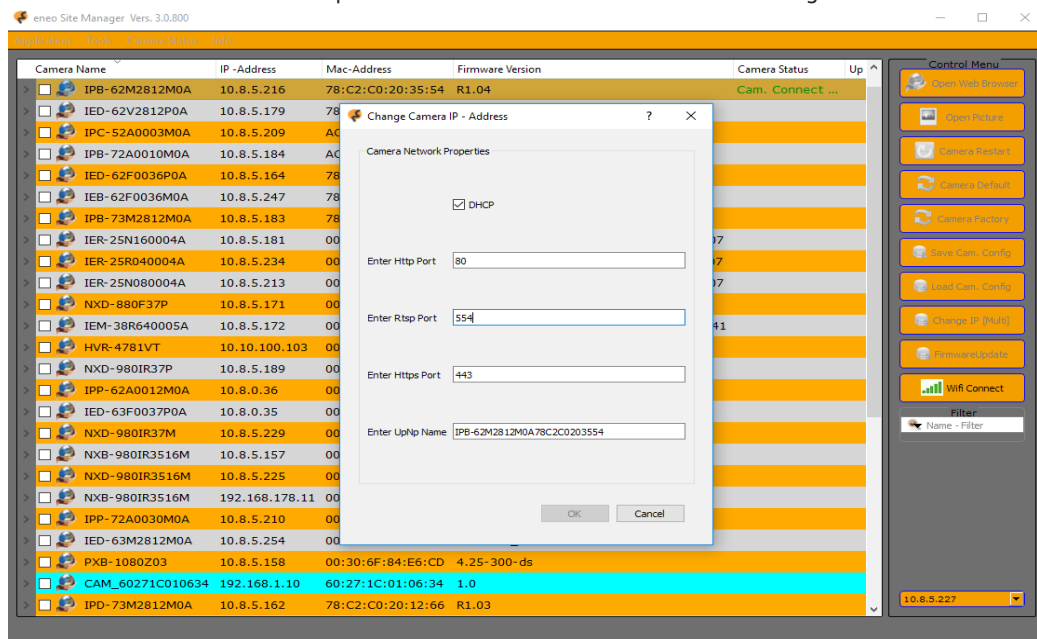
- IP address of the cameras

IP address changes are also possible for single or multiple cameras. By clicking on the context menu entry "Set-Address [static / dhcp]", the IP address of the camera (s) can be changed via the ESM.

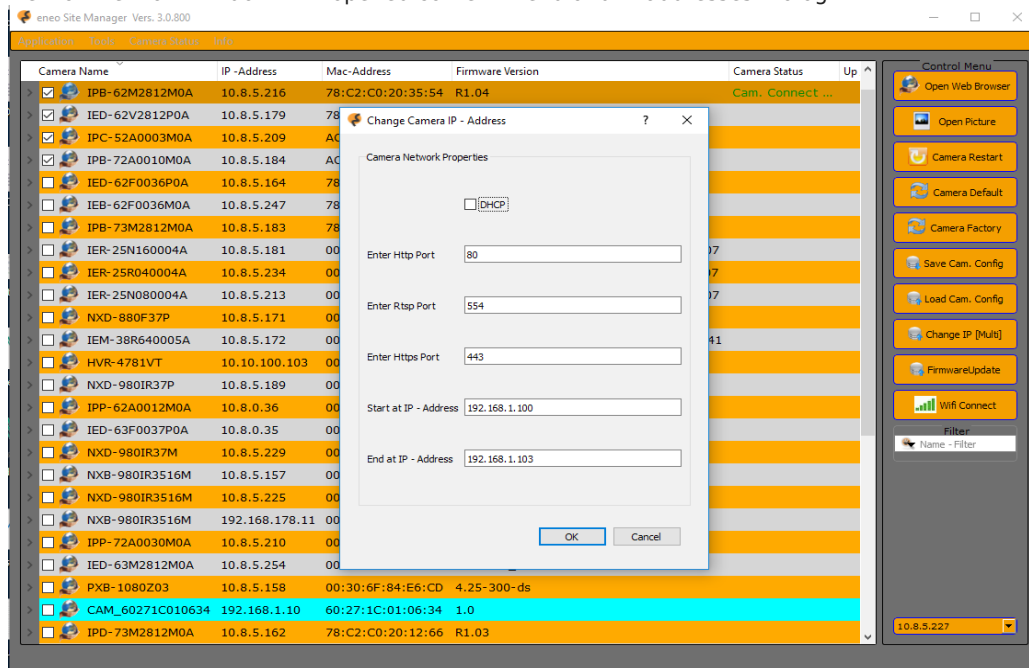
View of the main window with an open context menu and IP addresses Selection:



View of the main window with opened context menu and IP addresses Dialog:



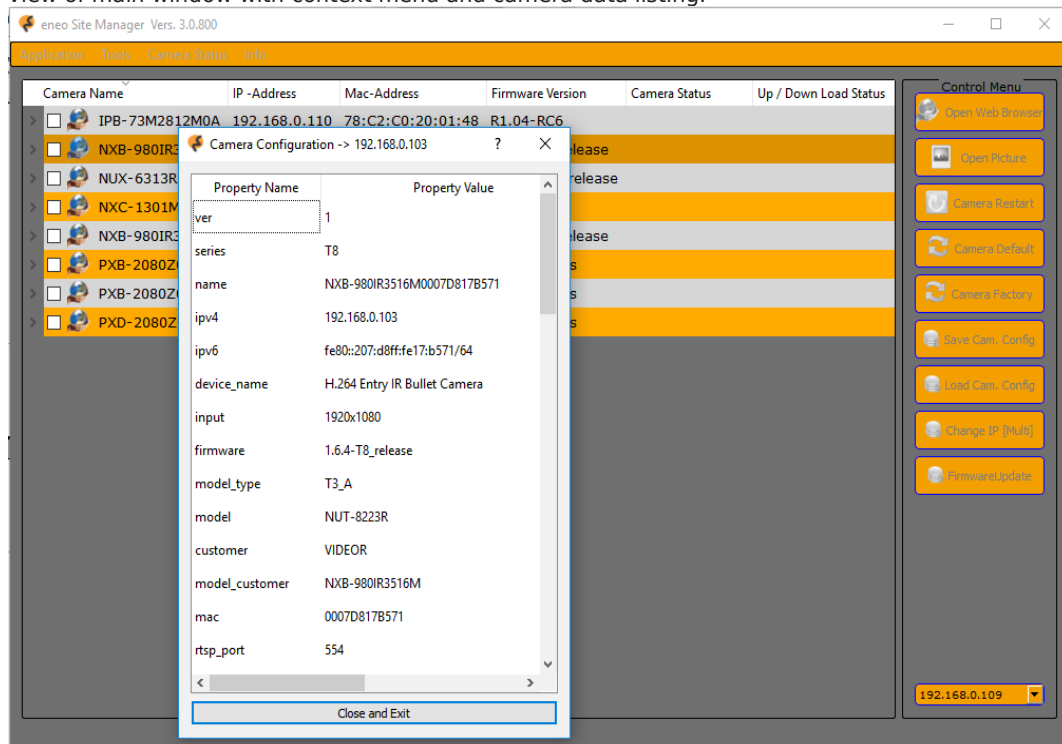
View of the main window with opened context menu and IP addresses Dialog:



- Query the camera configuration data

If you want to view the camera data with a short glance, the context menu entry "View Camera Configuration" is selected and clicked with the mouse. The data of the camera are then listed in a separate window. This function is performed for one camera at a time. A list of all camera data with a call is not provided.

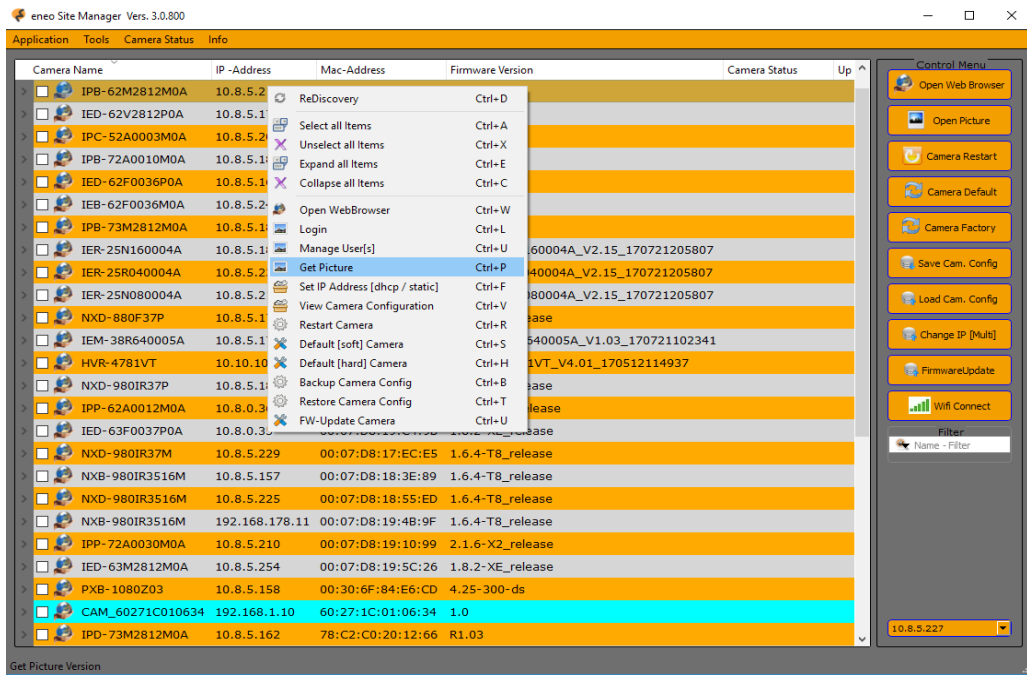
View of main window with context menu and camera data listing:



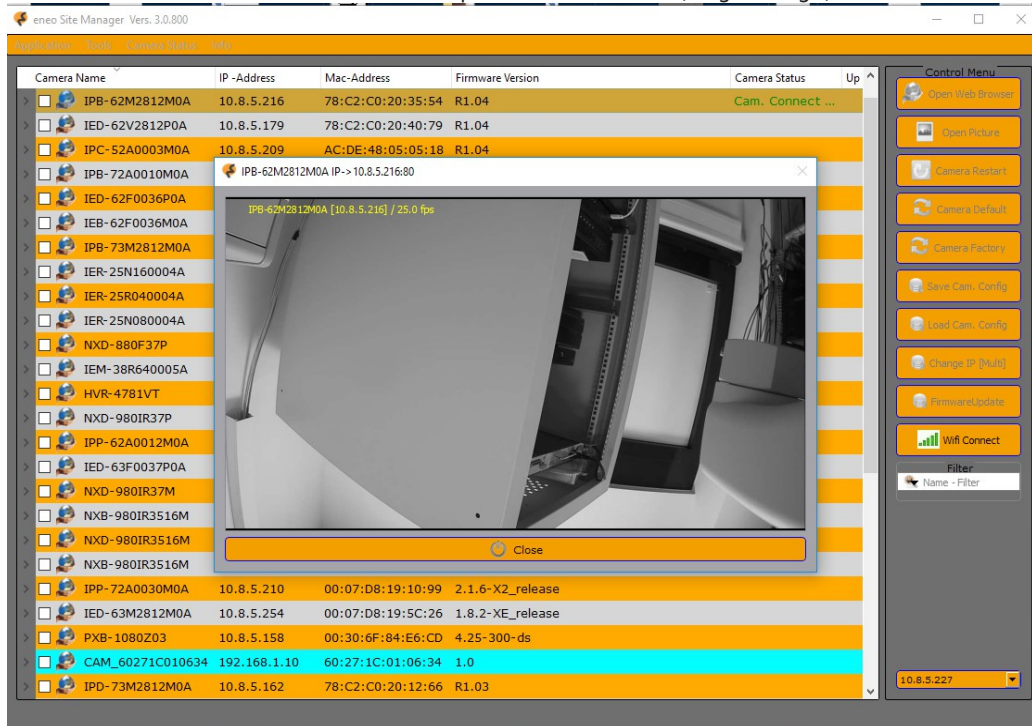
- Single or multi-image display

It is possible to display video images of individual cameras or even of several cameras. For the selection of the cameras, the procedure is as described several times. Either go to one of the listed cameras using the mouse and select the "Get Picture" context menu item with the right mouse button. A single image display is now opened. If you select several cameras, a multi-image display opens. In the desktop version, the ESM automatically selects between 1, 4 or 9-bit multi-image display. In the mobile version 1 and 4 multi-image display are available.

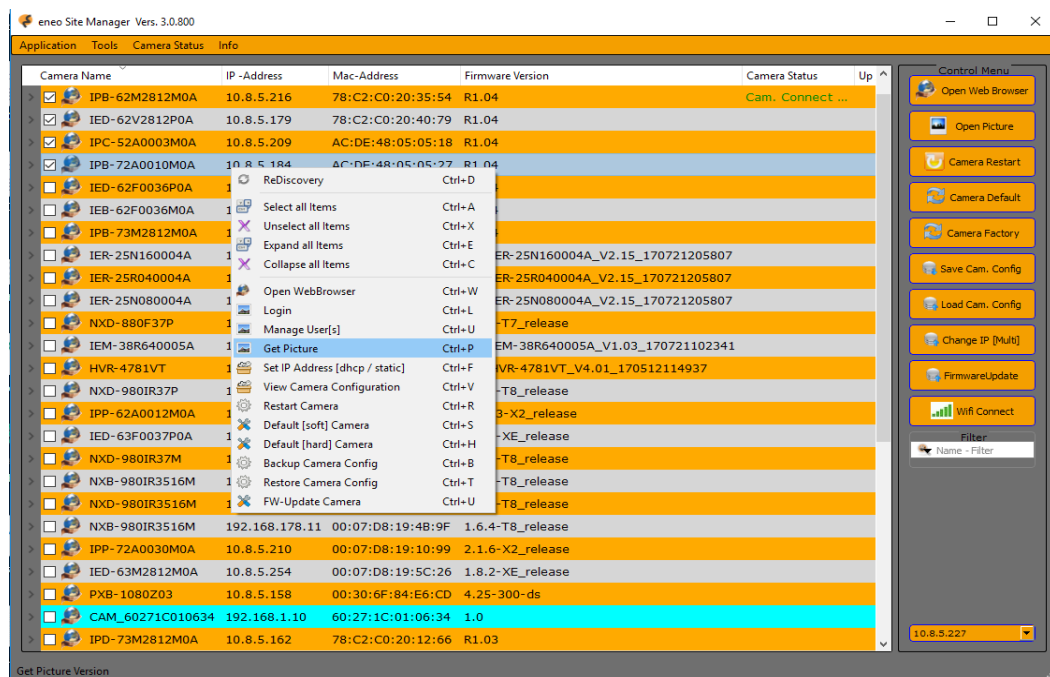
View of main window with context menu and Get Picture selection:



View of main window with context menu open and Get Picture (single-image)



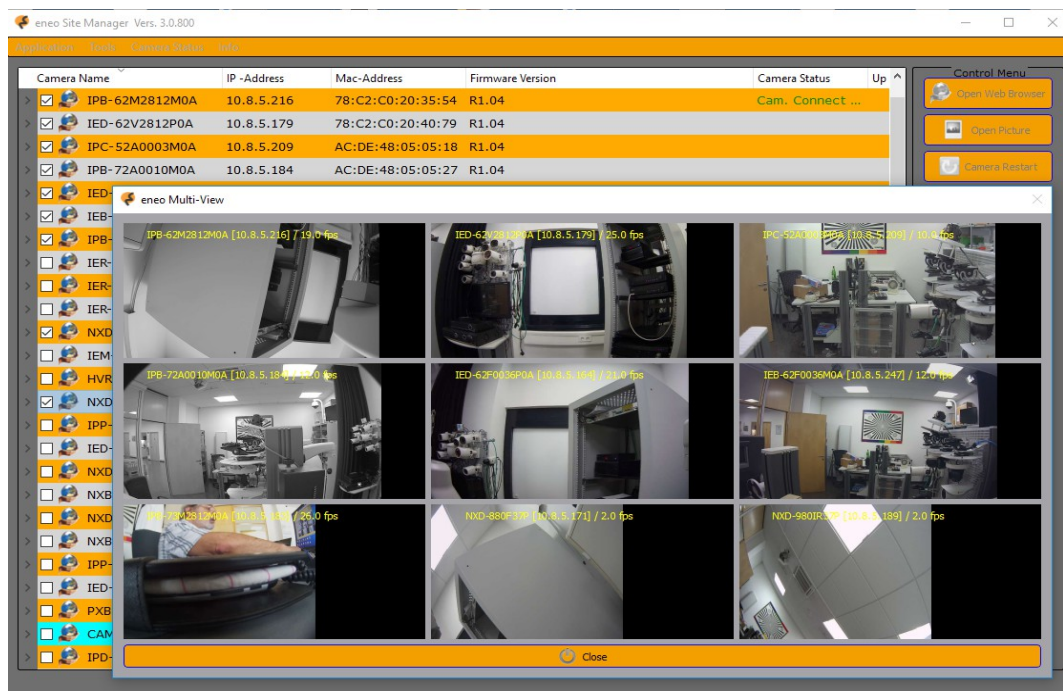
View of main window with context menu open and Get Picture (multi-image)



View of the main window with the context menu open and Get Picture (Multi-Picture / 4)



View of the main window with the context menu open and Get Picture (Multi-Picture / 9)



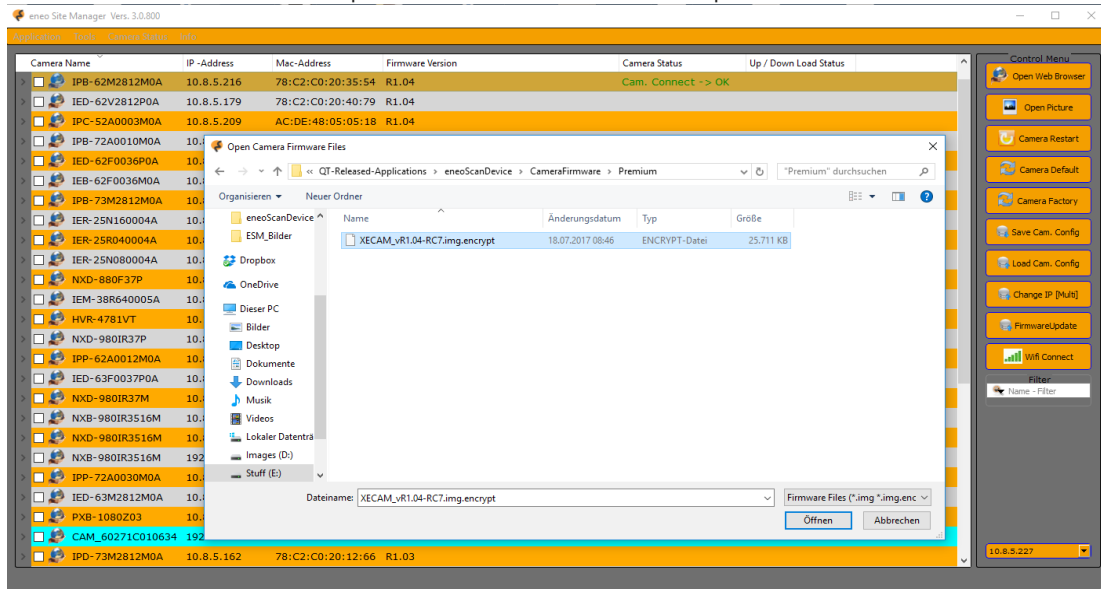
- Firmware Update

Firmware updates can be carried out from single cameras or several selected cameras. It is important that in a multi-update only the mutually compatible cameras are selected. You can easily do this with the "Name Filter" described above. Then it does not matter what different camera series are listed in the camera list. Only the cameras selected by the "Name Filter" are displayed and addressed.

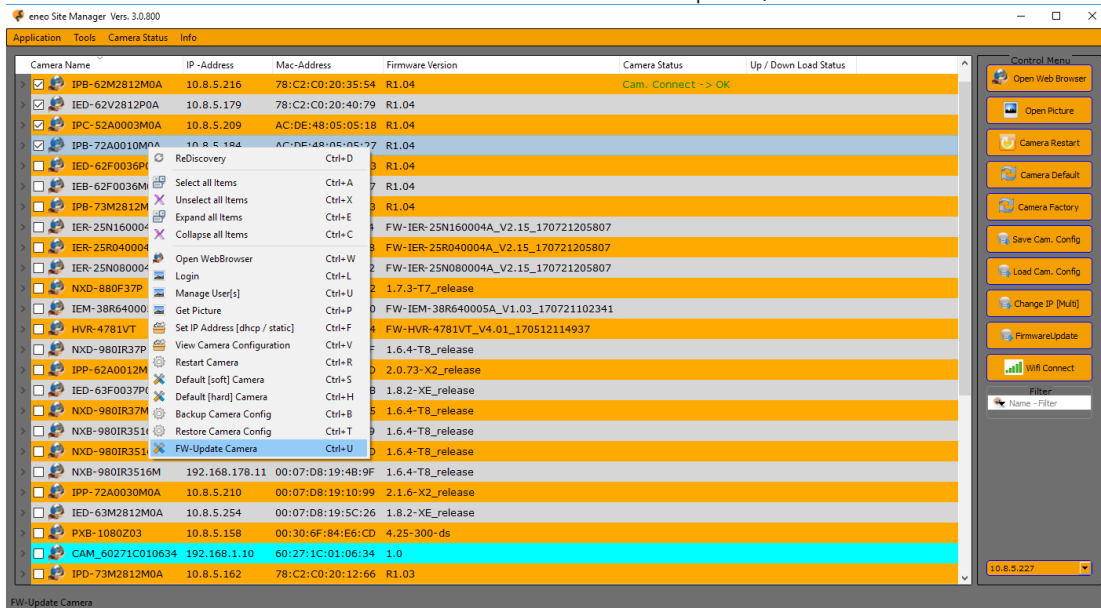
View of the main window with open context menu and firmware update



View of the main window with open context menu and firmware update / sel. FW File



View of the main window with the context menu and firmware update / Multi



View of the main window with the firmware update information / multi

eneo Site Manager Vers. 3.0.800

Camera Name	IP-Address	Mac-Address	Firmware Version	Camera Status	Up / Down Load Status
IPB-62M2812MOA	10.8.5.216	78:C2:C0:20:35:54	R1.04	Cam. Connect -> OK	4.73%
IED-62V2812POA	10.8.5.179	78:C2:C0:20:40:79	R1.04		100.00%
IPC-52A0003MOA	10.8.5.209	AC:DE:48:05:05:18	R1.04		65.80%
IPB-72A0010MOA	10.8.5.184	AC:DE:48:05:05:27	R1.04		25.39%
IED-62F0036POA	10.8.5.164	78:C2:C0:20:23:A3	R1.04		
IEB-62F0036MOA	10.8.5.247	78:C2:C0:20:2E:E7	R1.04		
IPB-73M2812MOA	10.8.5.183	78:C2:C0:20:10:13	R1.04		
IER-25N160004A	10.8.5.181	00:23:63:68:71:04	FW-IER-25N160004A_V2.15_170721205807		
IER-25R040004A	10.8.5.234	00:23:63:67:95:A8	FW-IER-25R040004A_V2.15_170721205807		
IER-25N080004A	10.8.5.213	00:23:63:5A:F5:62	FW-IER-25N080004A_V2.15_170721205807		
NXD-880F37P	10.8.5.171	00:07:D8:17:7A:32	1.7.3-T7_release		
IEM-38R640005A	10.8.5.172	00:07:D8:1A:11:50	FW-IEM-38R640005A_V1.03_170721102341		
HVR-4781VT	10.10.100.103	00:07:D8:2F:D8:F4	FW-HVR-4781VT_V4.01_170512114937		
NXD-980IR37P	10.8.5.189	00:07:D8:18:17:4F	1.6.4-T8_release		
IPP-62A0012MOA	10.8.0.36	00:07:D8:19:E1:8D	2.0.73-X2_release		
IED-63F0037POA	10.8.0.35	00:07:D8:19:C4:9B	1.8.2-XE_release		
NXD-980IR37M	10.8.5.229	00:07:D8:17:EC:E5	1.6.4-T8_release		
NXB-980IR3516M	10.8.5.157	00:07:D8:18:3E:89	1.6.4-T8_release		
NXD-980IR3516M	10.8.5.225	00:07:D8:18:55:ED	1.6.4-T8_release		
NXB-980IR3516M	192.168.178.11	00:07:D8:19:4B:9F	1.6.4-T8_release		
IPP-72A0030MOA	10.8.5.210	00:07:D8:19:10:99	2.1.6-X2_release		
IED-63M2812MOA	10.8.5.254	00:07:D8:19:5C:26	1.8.2-XE_release		
PXB-1080Z03	10.8.5.158	00:30:6F:84:E6:CD	4.25-300-ds		
CAM_60271C010634	192.168.1.10	60:27:1C:01:06:34	1.0		
IPD-73M2812MOA	10.8.5.162	78:C2:C0:20:12:66	R1.03		

Camera(s) found -> 40

Control Menu:

- Open Web Browser
- Open Picture
- Camera Restart
- Camera Default
- Camera Factory
- Save Cam. Config
- Load Cam. Config
- Change IP [Multi]
- Camera Update
- WiFi Connect

Filter: Name - Filter

10.8.5.227

View of the main window with the firmware update information / multi

eneo Site Manager Vers. 3.0.800

Camera Name	IP-Address	Mac-Address	Firmware Version	Camera Status	Up / Down Load Status
IPB-62M2812MOA	10.8.5.216	78:C2:C0:20:35:54	R1.04	Cam. Connect -> OK	100.00%
IED-62V2812POA	10.8.5.179	78:C2:C0:20:40:79	R1.04	Cam. Connect -> OK	100.00%
IPC-52A0003MOA	10.8.5.209	AC:DE:48:05:05:18	R1.04	Cam. Connect -> OK	100.00%
IEM-38R640005A	10.8.5.172	00:07:D8:1A:11:50	FW-IEM-38R640005A_V1.03_170721102341		
HVR-4781VT	10.10.100.103	00:07:D8:2F:D8:F4	FW-HVR-4781VT_V4.01_170512114937		
NXD-980IR37P	10.8.5.189	00:07:D8:18:17:4F	1.6.4-T8_release		
IPP-62A0012MOA	10.8.0.36	00:07:D8:19:E1:8D	2.0.73-X2_release		
IED-63F0037POA	10.8.0.35	00:07:D8:19:C4:9B	1.8.2-XE_release		
NXD-980IR37M	10.8.5.229	00:07:D8:17:EC:E5	1.6.4-T8_release		
NXB-980IR3516M	10.8.5.157	00:07:D8:18:3E:89	1.6.4-T8_release		
NXD-980IR3516M	10.8.5.225	00:07:D8:18:55:ED	1.6.4-T8_release		
NXB-980IR3516M	192.168.178.11	00:07:D8:19:4B:9F	1.6.4-T8_release		
IPP-72A0030MOA	10.8.5.210	00:07:D8:19:10:99	2.1.6-X2_release		
IED-63M2812MOA	10.8.5.254	00:07:D8:19:5C:26	1.8.2-XE_release		
PXB-1080Z03	10.8.5.158	00:30:6F:84:E6:CD	4.25-300-ds		
CAM_60271C010634	192.168.1.10	60:27:1C:01:06:34	1.0		
IPD-73M2812MOA	10.8.5.162	78:C2:C0:20:12:66	R1.03		
IPB-73M2812MOA	10.8.5.243	78:C2:C0:20:7C:78	R1.03		
IPP-62A0012MOA	192.168.254.81	00:07:D8:19:E1:8F	2.0.73-X2_release		
CAM_60271C010632	192.168.1.10	60:27:1C:01:06:32	1.0		
CAM_60271C010658	192.168.1.10	60:27:1C:01:06:58	1.0		
CAM_60271C010654	192.168.1.10	60:27:1C:01:06:54	1.0		
CAM_60271C010640	192.168.1.10	60:27:1C:01:06:40	1.0		
IPB-73M2812MOA	192.168.0.110	78:C2:C0:20:01:48	R1.04-RC6		
NXC-1301M	192.168.0.220	00:07:D8:02:D0:45	2.2.80		

Control Menu:

- Open Web Browser
- Open Picture
- Camera Restart
- Camera Default
- Camera Factory
- Save Cam. Config
- Load Cam. Config
- Change IP [Multi]
- Firmware Update
- WiFi Connect

Filter: Name - Filter

10.8.5.227

- Restart
- Default [soft]
- Default [hard]

The o.g. Functions are also available for single or multi-camera selection.

- Backup Camera Config

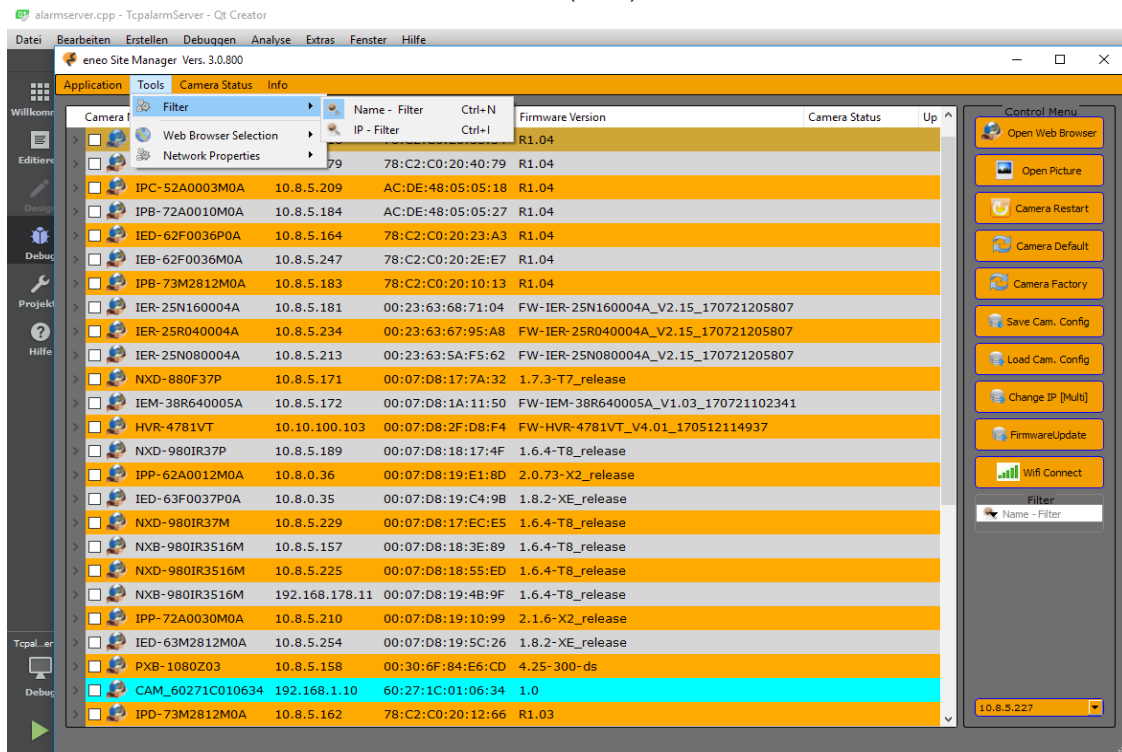
With this function, the camera configuration can be saved on the PC. The file names are indicated by the camera MAC address.

- Restore Camera Config

This function can be used to restore a camera configuration. This applies to e.g. an exchanged camera (of the same design) or to load a specific configuration, which you want to load on several cameras (of the same design).

6. Additional functions from the menu in the main window:

View of the main window with the additional menu (Tools)

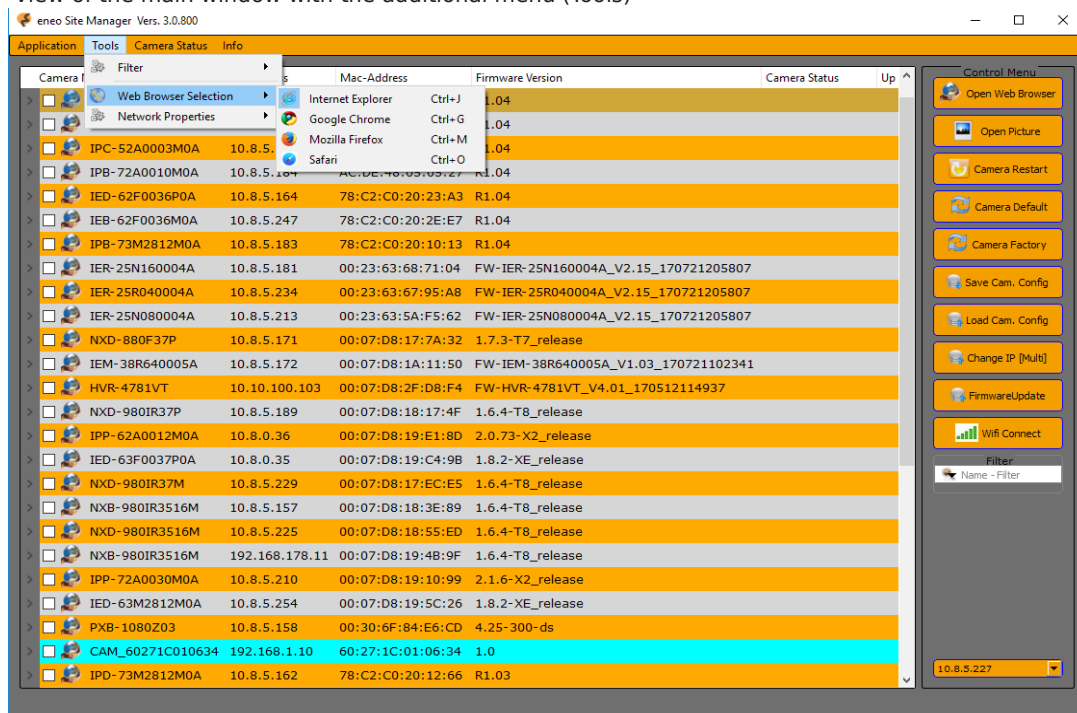


- Via the menu item "Filter", the IP filter or name filter can be activated or deactivated. When the filter is active, an input window appears on the right under the control elements, in which the corresponding filter value can be set.
- The entry "Web Browser Selection" offers the possibility to use different web browsers. Depending on the selection, this browser is activated for the ESM as the default browser. Only browsers that are installed on the system are displayed. Get supported:
 - Internet Explorer
 - Google Chrome
 - Mozilla Fire Fox
 - Safari

If other web browsers are installed, they will not be available in the Menu.

- If you open the ESM as "Admin", you can get the menu entry "Network-Properties" the own IP settings of the PC to change. Try to enter this menu item as "non-admin" you will be informed by a corresponding message window.

View of the main window with the additional menu (Tools)



View of the main window with open additional menu (Camera Status)

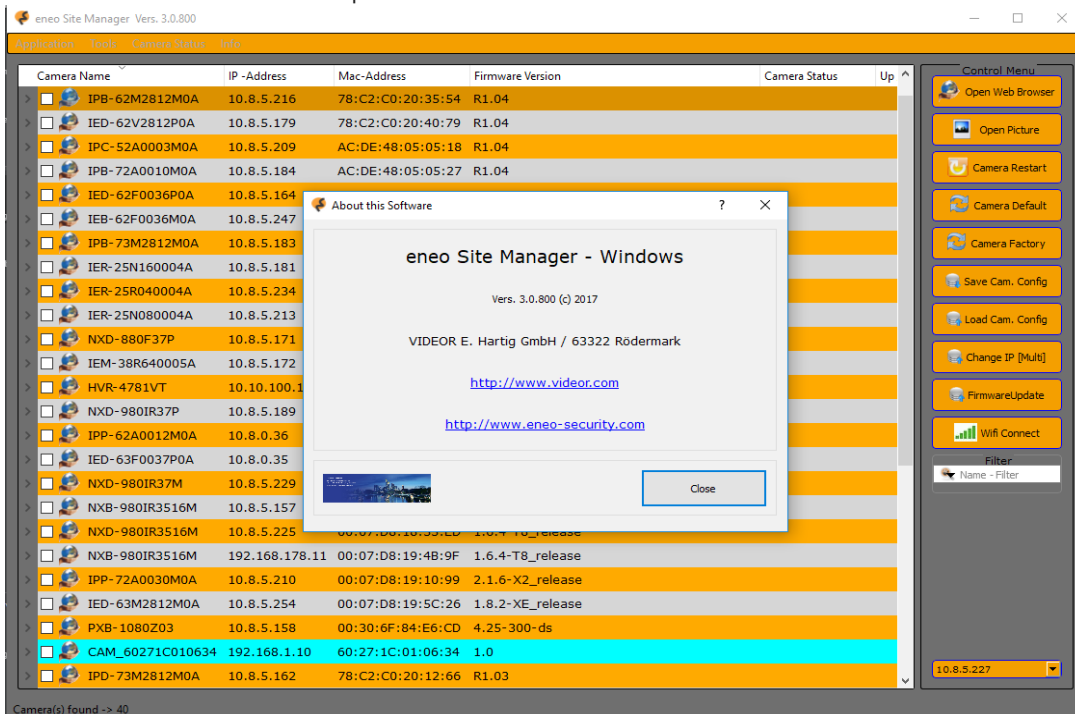


- Camera Status (Camera Status)

For various functions, such as FW-Update, Backup Camera Config, and Restore-Camera Config, additional display elements and additional text information are available. These can be configured via the "Camera Status" menu.

- The "Info" menu item opens an infowindow in which the name, version and the copywrite of the ESM are displayed. A direct link to the VIDEOR and the eneo web page are also available.

View of the main window with opened info window



7. List of available Short Keys

- ESM beenden Ctrl-Q
- Name-Filter Ctrl-N
- IP-Filter Ctrl-I
- Sel. IE-Explorer Ctrl-J
- Sel. Google Chrome Ctrl-G
- Sel. Mozilla Fire Fox Ctrl-M
- Sel. Safari Ctrl-O
- Camera Status Show Alt-S
- Camera Status Hide Alt-H
- Camera Status Clear Alt-C

- Select all Items Ctrl-A
- Unselect all Items Ctrl-X
- Expand all Items Ctrl-E
- Collaps all Items Ctrl-C
- Open Web Browser Ctrl-W
- Login Window Ctrl-L
- Manage User[s] Ctrl-U
- Get Picture Ctrl-P
- Set IP-Address Ctrl-F
- View Camera Config. Ctrl-V
- Restart Camera Ctrl-R
- Default[soft] Ctrl-S
- Default[hard] Ctrl-H
- Backup Cam. Config. Ctrl-B
- Restore Cam. Config. Ctrl-T
- Firmware Update Ctrl-U

8. Mobile Version for Android



The mobile version of the ESM for Android is similar to the desktop version described above ESM. Only the following functions are not available:

- BackUp der Kamera Konfurations Daten
- Restore der Kamera Konfigurations Daten
- Firmware Update der Kamera(s)
- Manage User(s)
- Short Keys

The following functions are supported:

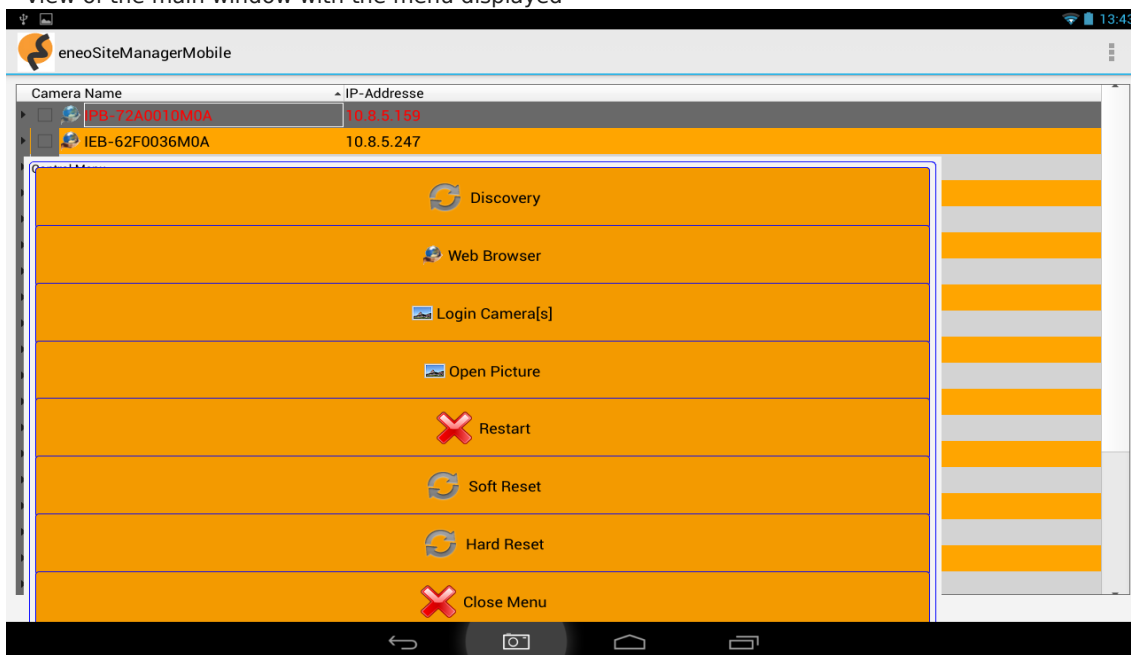
- Start Discovery
- Open Web Browser
- Login Fenster für differentielle Zugangsdaten der Kamera(s)
- Open Picture(s) 1 oder 4er Split Darstellung
- Restart der Kamera(s)
- Default der Kamera(s) [soft]
- Default der Kamera(s) [hard]

10. Screen Shots of the Mobile Version:

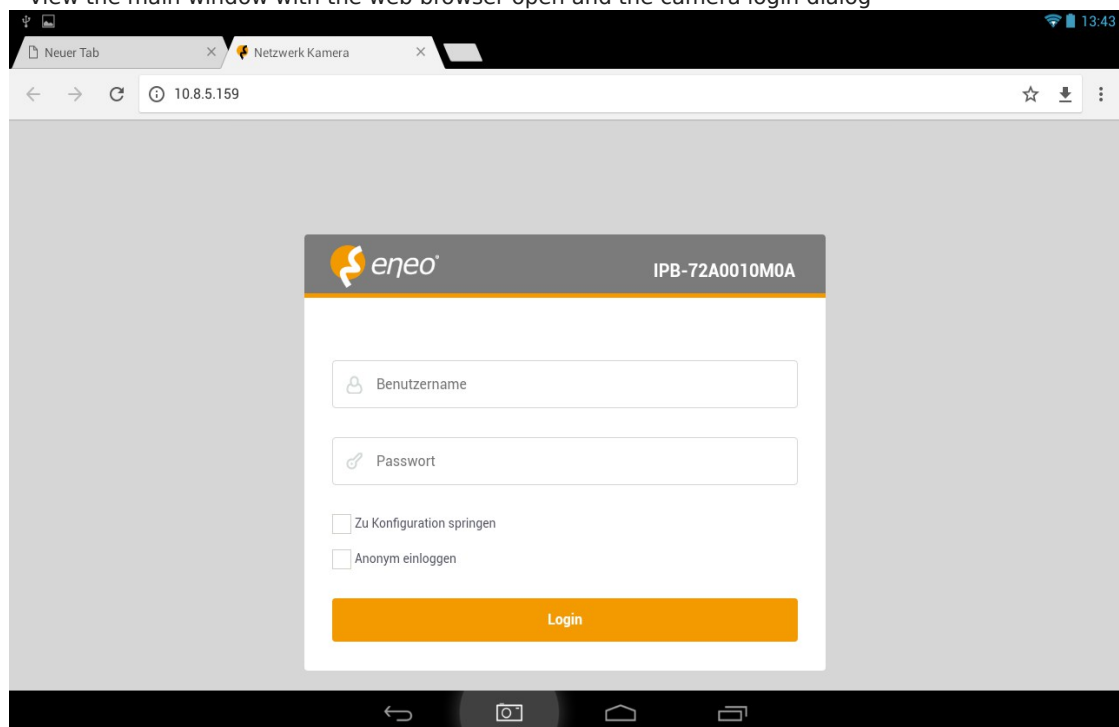
View the Camera List window



View of the main window with the menu displayed



View the main window with the web browser open and the camera login dialog



View of main window with open web browser and camera Live image (single)



View of main window with open web browser and camera Live image (quad)



View of the main window with open login dialog

