

FIRMWARE ANNOUNCEMENT

December 2024

SUBJECT

Experience the improved **Ossia NVR - V1.4.12**

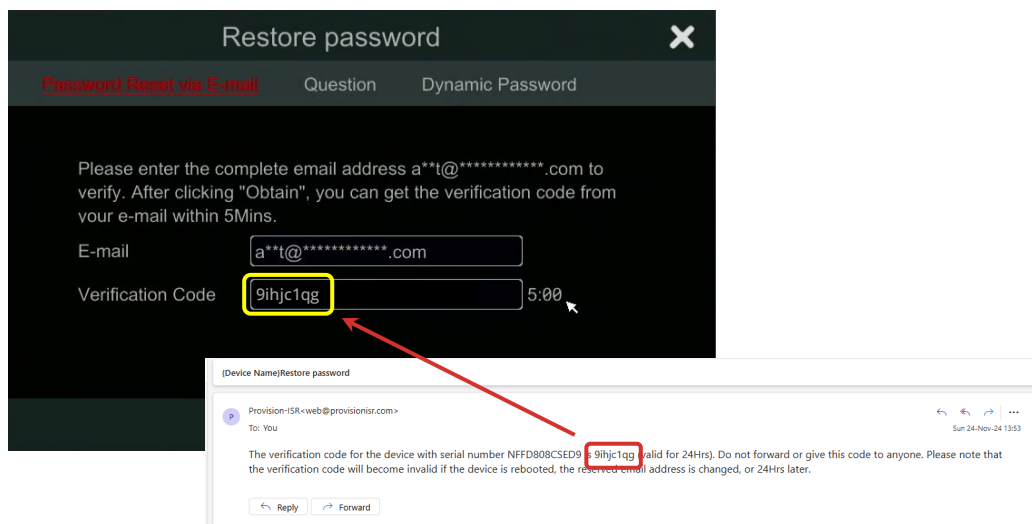
Ossia NVR v1.4.12 (supported models at the end)

LIST OF IMPROVEMENTS:

1) NEW: PASSWORD RECOVERY EMAIL

Resetting your NVR password is now quicker and much simpler. Forget security questions or dynamic resets. Just **enter your registered email address**, and a verification code will be sent directly to your inbox, allowing you to **reset your password in seconds**.

For new devices, this feature is included in the initial setup wizard. For existing devices, **simply add your email address** under the system settings and enable the option.



[Watch the Video](#)

2) NEW: OBJECT COUNTING BY AREA

Counting objects has never been easier!

Area-based object counting is now **fully configurable directly on the NVR**. Define detection zones, set thresholds, and trigger custom alerts when occupancy limits are reached.

Whether tracking humans, 2-wheels, or 4-wheels, this feature offers **advanced customization options**, including staying thresholds, automatic or manual counter resets, and **on-screen display adjustments**.

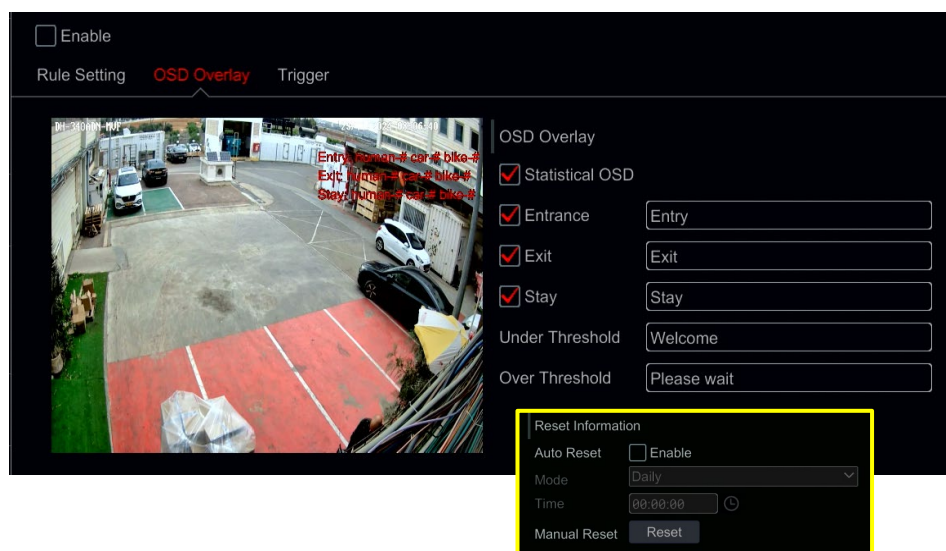


[Watch the Video](#)

3) IMPROVED: OBJECT COUNTING BY LINE

With version 1.4.12, Object Counting by Line includes additional settings directly on the NVR. Now, you can **set "staying" thresholds for tracked objects** and trigger alerts when thresholds are exceeded. Whether it's a push notification, video pop-up, email, or activating onboard audio-visual alarms, the response is **yours to define**.

You can also **customize the On-Screen Display (OSD)** and **reset counters** manually or automatically. There is no need to access the camera's web interface.

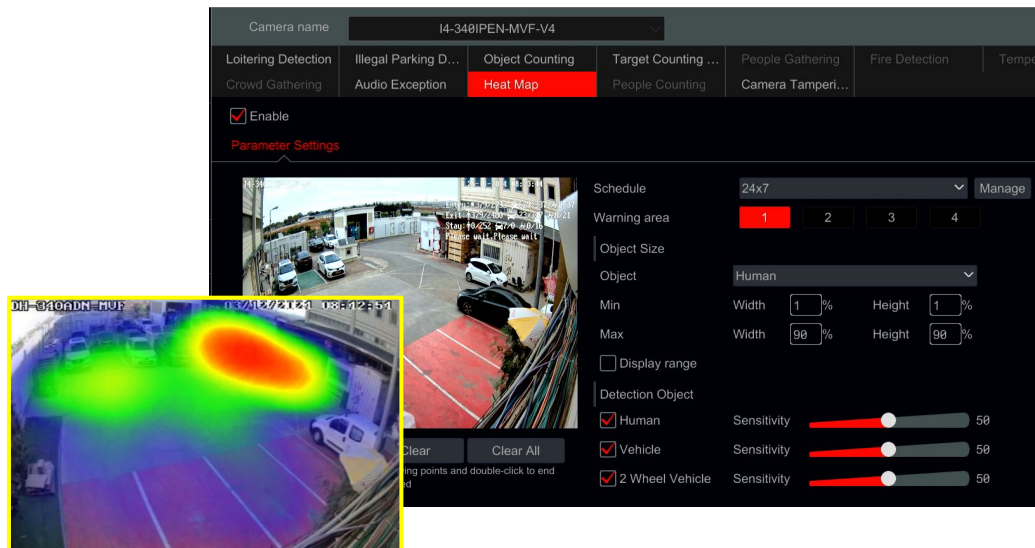


[Watch the Video](#)

4) NEW: HEATMAP SUPPORT

Heatmap analytics, previously accessible only through the IP camera's web interface, **can now be configured directly on the NVR** with firmware version 1.4.12. This feature visually represents **activity density** and **movement** within a defined area using Provision-ISR's AI.

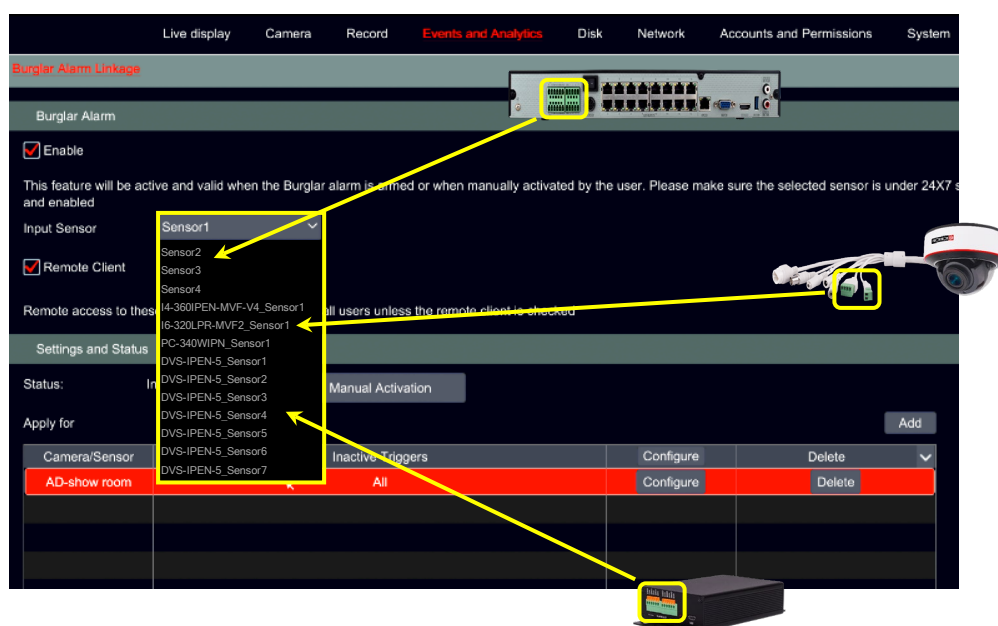
With **color-coded overlays** displayed on the camera's field of view, heatmaps provide actionable insights for analyzing trends and patterns in object movement.



5) IMPROVED: BURGLAR ALARM

The Burglar Alarm feature allows you to **activate or deactivate specific triggers and notifications based on the system's armed state**. Version 1.4.12 offers enhanced options for arming and disarming, which previously relied solely on the NVR's built-in I/O ports.

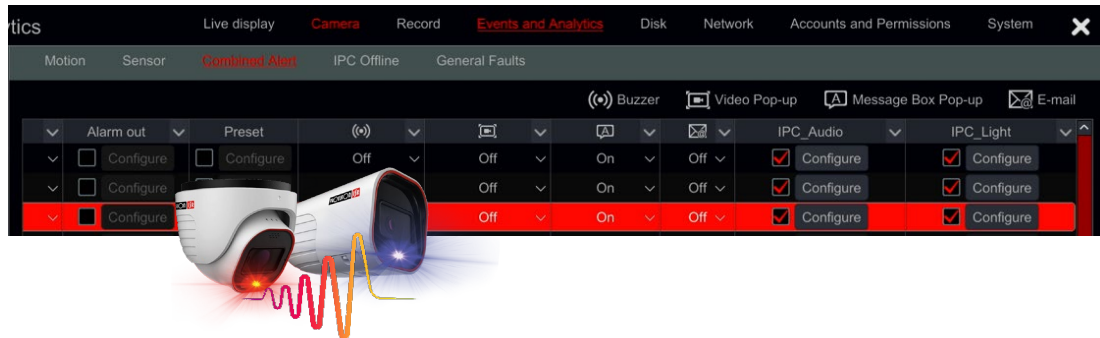
Now, you can use alarm inputs from **connected IP cameras or I/O expansion boxes**, providing **greater flexibility for installations** where the NVR lacks physical I/O ports or is far from external devices.



6) IMPROVED: COMBINED ALERT

The combined alert feature initiates unified system responses, including App notifications, email alerts, video pop-ups, alarm outputs, and PTZ camera actions. With this update, **visual and audio alerts from active deterrence cameras** are now **included as additional triggers**.

This enhancement expands the versatility of combined alerts, allowing **more** dynamic and effective **system responses** to multi-event triggers for improved security management.



7) NEW: PoE IP SPEAKER INTEGRATION

This firmware release supports the functionality of the new PoE IP Speakers, offering versatile audio management.

- By **connecting to an NVR**, the speakers are a **centralized device for system-wide voice announcements** and alerts.
- When **linked with an IP camera** via the NVR, they can **generate audio responses based on analytics**, adding an important auditory layer to your security system.

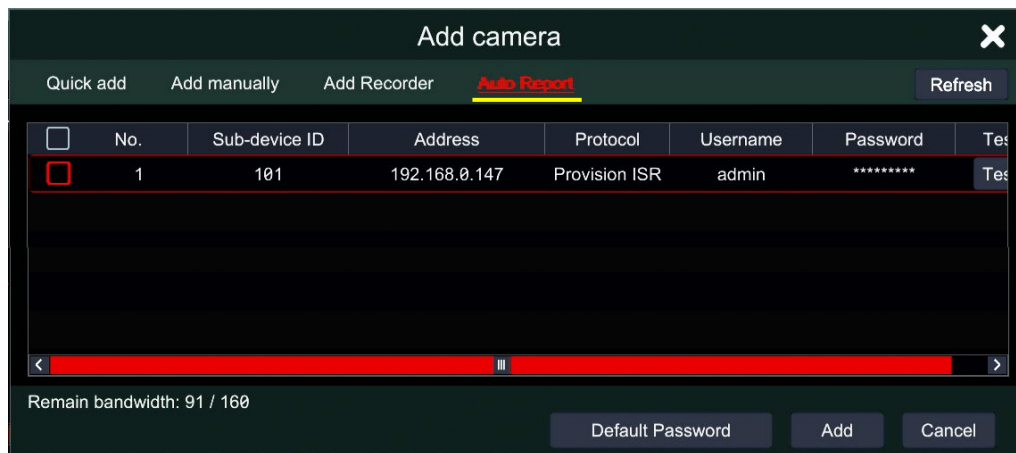
This new feature transforms your PoE IP speakers into **powerful tools** for **communication and deterrence**, making your system smarter and more responsive to real-time events.



8) NEW: CAMERA AUTO-REPORT

With FW v1.4.12, the new Auto-Report feature **simplifies connecting remote IP cameras** to your NVR. By reversing traditional methods, cameras automatically report to the NVR, **eliminating the need for complex configurations** like static IPs or port forwarding.

This innovation **saves significant time and effort**, allowing for quick and efficient deployment across multiple locations, whether for a single device or an extensive camera network.



The screenshot shows the 'Add camera' window with the 'Auto Report' tab selected. The window has a table with columns: No., Sub-device ID, Address, Protocol, Username, Password, and Test. The first row is highlighted in red and contains the following data: No. 1, Sub-device ID 101, Address 192.168.0.147, Protocol Provision ISR, Username admin, Password *****. Below the table is a progress bar and a status indicator 'Remain bandwidth: 91 / 160'. At the bottom are buttons for 'Default Password', 'Add', and 'Cancel'.

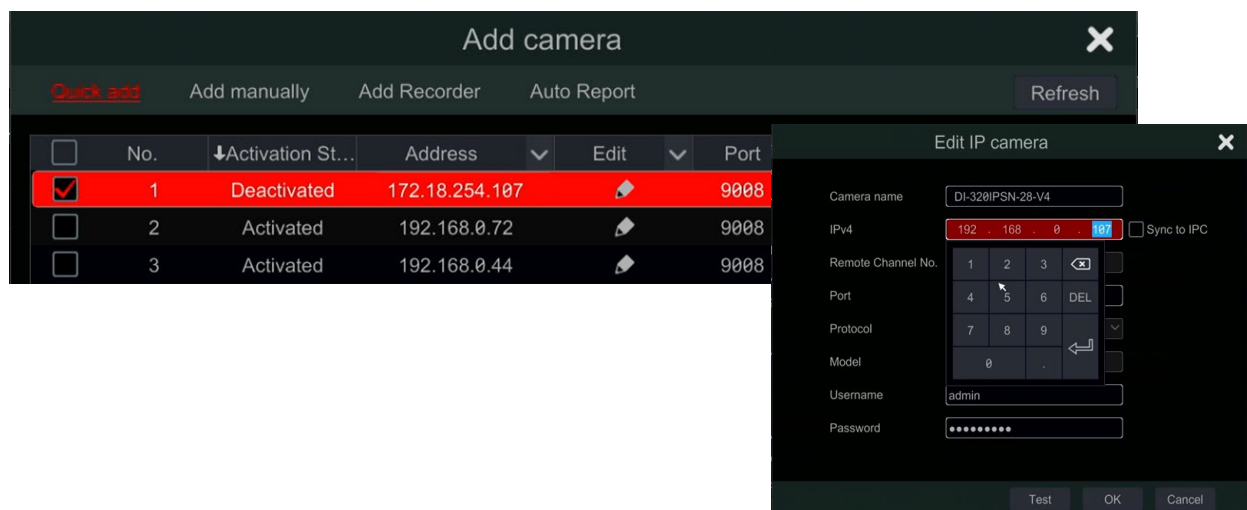
No.	Sub-device ID	Address	Protocol	Username	Password	Test
1	101	192.168.0.147	Provision ISR	admin	*****	Test

[Watch the Video](#)

9) IMPROVED: IPC ACTIVATION

Tired of network restrictions when activating Provision-ISR IP cameras? No Problem! Now, your NVR **lets you activate any camera outside the local network range**. Skip the need for the IP Tool Manager or a laptop; activate directly from the NVR and **adjust the IP address post-activation**.

This enhancement simplifies device setup, saving time and effort while ensuring seamless configuration across diverse setups.



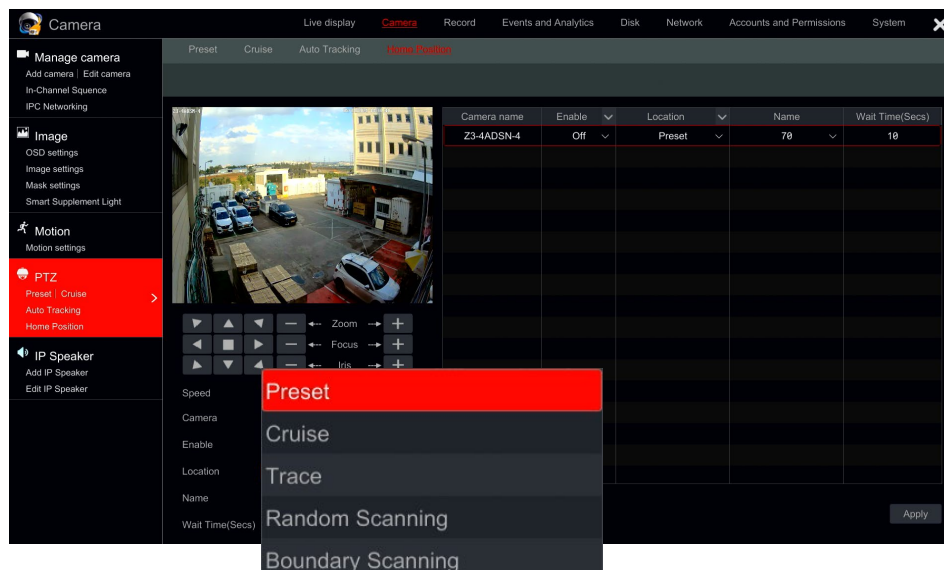
The screenshot shows the 'Add camera' window with the 'Auto Report' tab selected. The window has a table with columns: No., Activation St..., Address, Edit, and Port. The first row is highlighted in red and contains the following data: No. 1, Activation St... Deactivated, Address 172.18.254.107, Edit (pencil icon), Port 9008. Below the table are buttons for 'Quick add', 'Add manually', 'Add Recorder', 'Auto Report', and 'Refresh'. An 'Edit IP camera' dialog box is open, showing fields for Camera name, IPv4, Remote Channel No., Port, Protocol, Model, Username, and Password. The IPv4 field is highlighted in red and contains the value 192.168.0.107. The Remote Channel No. field contains the value 1. The Port field contains the value 9008. The Protocol field contains the value 0. The Username field contains the value admin. The Password field contains the value *****.

No.	Activation St...	Address	Edit	Port
1	Deactivated	172.18.254.107		9008
2	Activated	192.168.0.72		9008
3	Activated	192.168.0.44		9008

10) IMPROVED: PTZ PARK ACTION

The improved feature lets you **configure PTZ Park Action directly from the NVR**. Easily set your PTZ camera to return to a preset position or resume tasks like cruising, boundary scanning, or random scanning after inactivity.

Simplified setup. **Streamlined control.**



11) NEW: FISHEYE DEWARP & AI SUPPORT

First off, the 12MP 32-channel NVR models now **regain local fisheye dewarping support** for clear, distortion-free views. Dewarp live or recorded footage easily by selecting your installation mode (ceiling, wall, or desk) for optimal perspectives.

Additionally, our new fisheye models (6MP-V3 and 12MP) **come equipped** with advanced **AI (DDA™1) analytics**. You can set triggers for line crossing, sterile area monitoring, or object counting, all backed by precise human recognition. Even with the unique fisheye perspective, our **AI adapts intelligently**, delivering accurate results for optimal surveillance.



[Watch the Video](#)

12) NEW: ONVIF PROFILE M

Provision-ISR now brings ONVIF Profile M support to our NVRs.

This update enables our NVRs to **send metadata generated by** the NVR's **built-in AI engine** directly to third-party VMS or PSIM platforms for seamless integration.

Additionally, the NVRs can **receive metadata from third-party ONVIF-compatible cameras**, utilizing it for **trigger-based actions** such as event recording, push notifications, and email alerts.

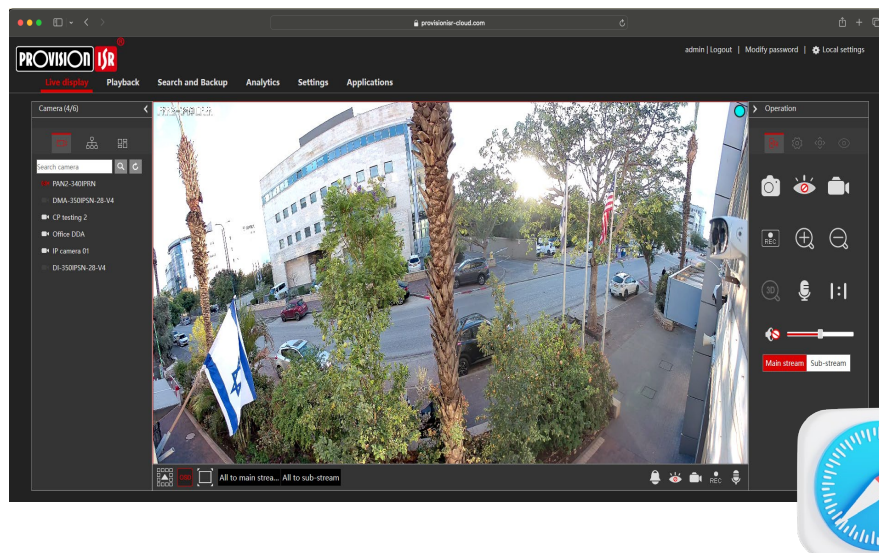


[Watch the Video](#)

13) IMPROVED: SAFARI P2P SUPPORT

Safari users on macOS can now enjoy **improved P2P connectivity**. With the latest update, our NVRs offer **smooth access through Safari**, thanks to an enhanced plugin for Provision-ISR Cloud.

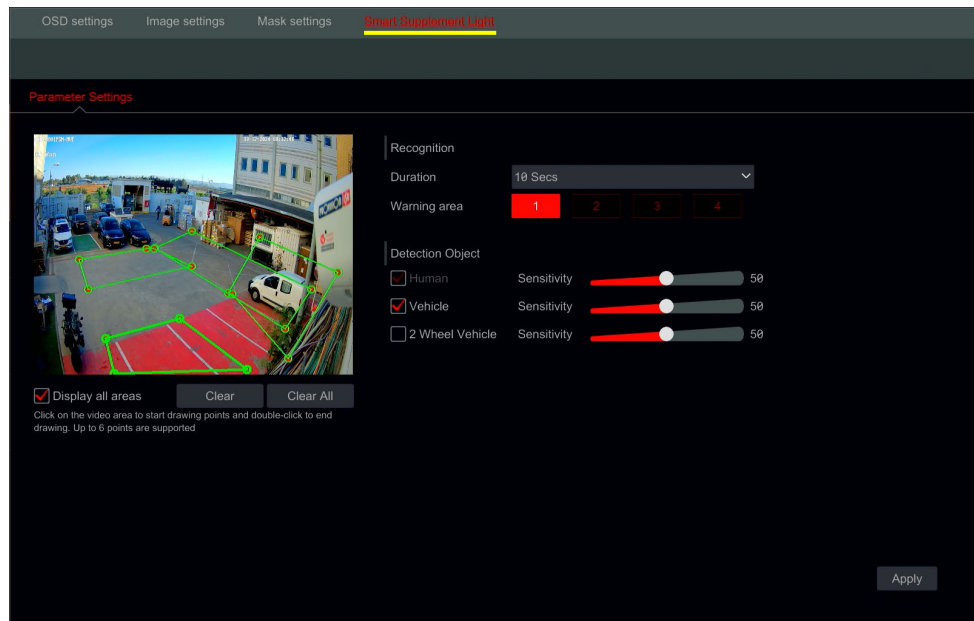
Experience a direct connection to your NVR without any hassle.



14) NEW: SMART SUPPLEMENT LIGHT

Provision-ISR NVRs now support the direct configuration of **hybrid cameras' Smart Supplement Light** feature. This advanced feature enhances nighttime surveillance by using IR LEDs for discreet black-and-white imaging and activating white LEDs only when **specific objects** (e.g., humans or vehicles) **enter predefined areas**.

Users can now configure up to **4 detection areas** and select object types to trigger the white LEDs, ensuring precise, tailored illumination while minimizing disturbances.



[Watch the Video](#)

SUPPORTED MODELS

NDAA MODELS	
NVR5-4100PXN(MM)	NVR12-8200FAN
NVR5-4100XN(MM)	NVR12-8200PFAN
NVR5-8200PXN(MM)	NVR12-16400FAN(1U)
NVR5-8200XN(MM)	NVR12-16400PFAN(1U)
NVR8-4100PN-V2	NVR12-32800FAN(1U)
NVR8-8200N-V2	NVR12-32800FN-16P(2U)
NVR8-8200PN-V2	NVR12-32800RFAN(2U)
NVR8-16400AN(1U)-V2	NVR16-641600RFAN(2U)
NVR8-16400PAN(1U)-V2	NVR16-128RFAN(3U)

NON-NDAA MODELS	
NVR5-4100PX+(MM)	NVR8-16400PF(1.5U)
NVR5-4100X+(MM)	NVR8-16400PFA(1U)
NVR5-8200PX+(MM)	NVR8-32800F(1U)
NVR5-8200X+(MM)	NVR8-32800F(2U)
NVR8-8200FA	NVR8-32800F-16P(2U)
NVR8-8200PFA	NVR8-32800FA(1U)
NVR8-16400A(1U)	NVR8-32800RFA(2U)
NVR8-16400F(1U)	NVR8-641600R(2U)
NVR8-16400FA(1U)	NVR8-128RT(3U)