

TECHNICAL ANNOUNCEMENT

April 2022

SUBJECT

NVR v1.4.6 Experience the improved Ossia NVR

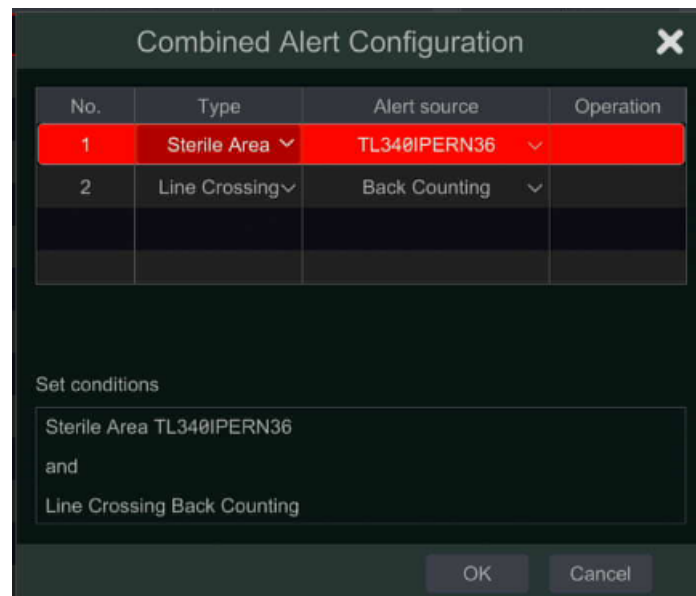
Ossia NVR v1.4.6:

LIST OF IMPROVEMENTS

1) DDA COMBINED ALERT

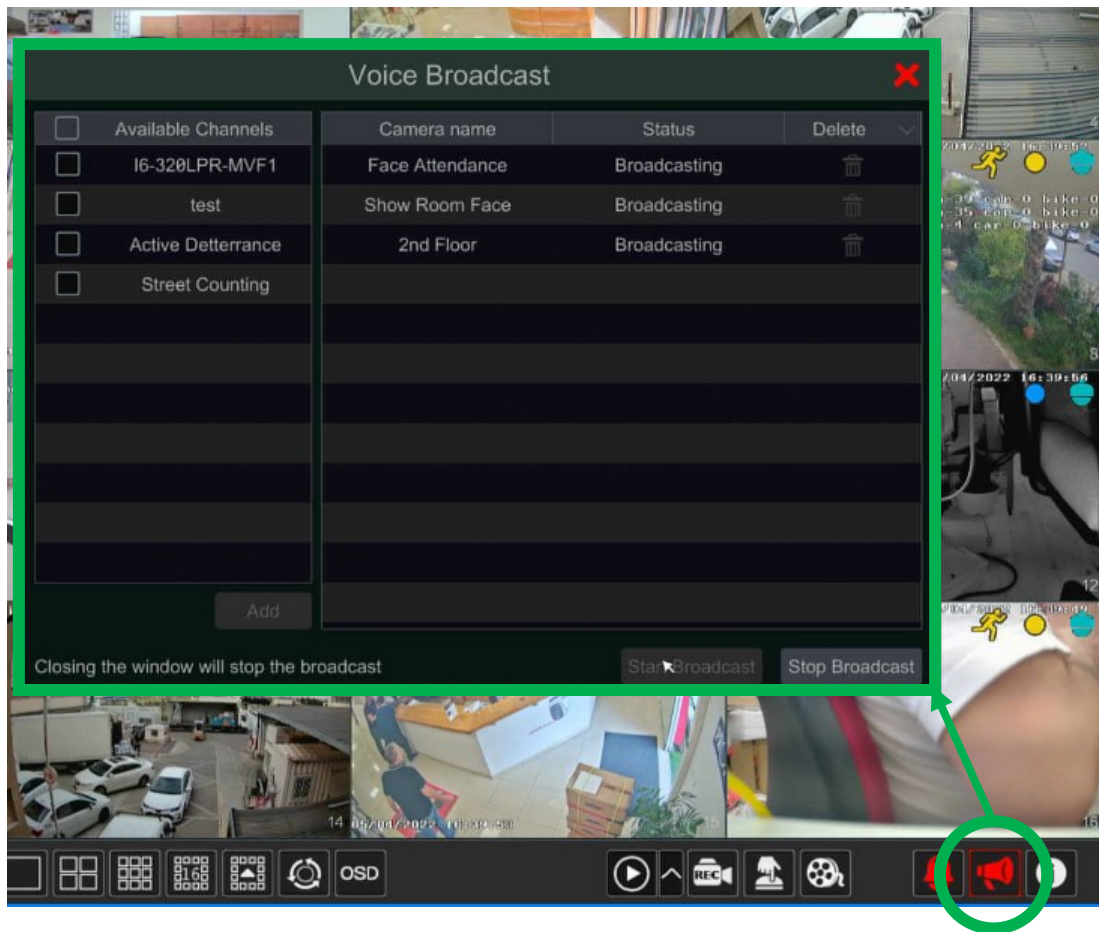
The combined alert can now support 2 DDA object recognition events. The newly available combinations are:

1. Line Crossing from *Camera A* + Line Crossing from *Camera B*
2. Line Crossing from *Camera A* + Sterile Area from *Camera B*
3. Sterile Area from *Camera A* + Line Crossing from *Camera B*
4. Sterile Area from *Camera A* + Sterile Area from *Camera B*



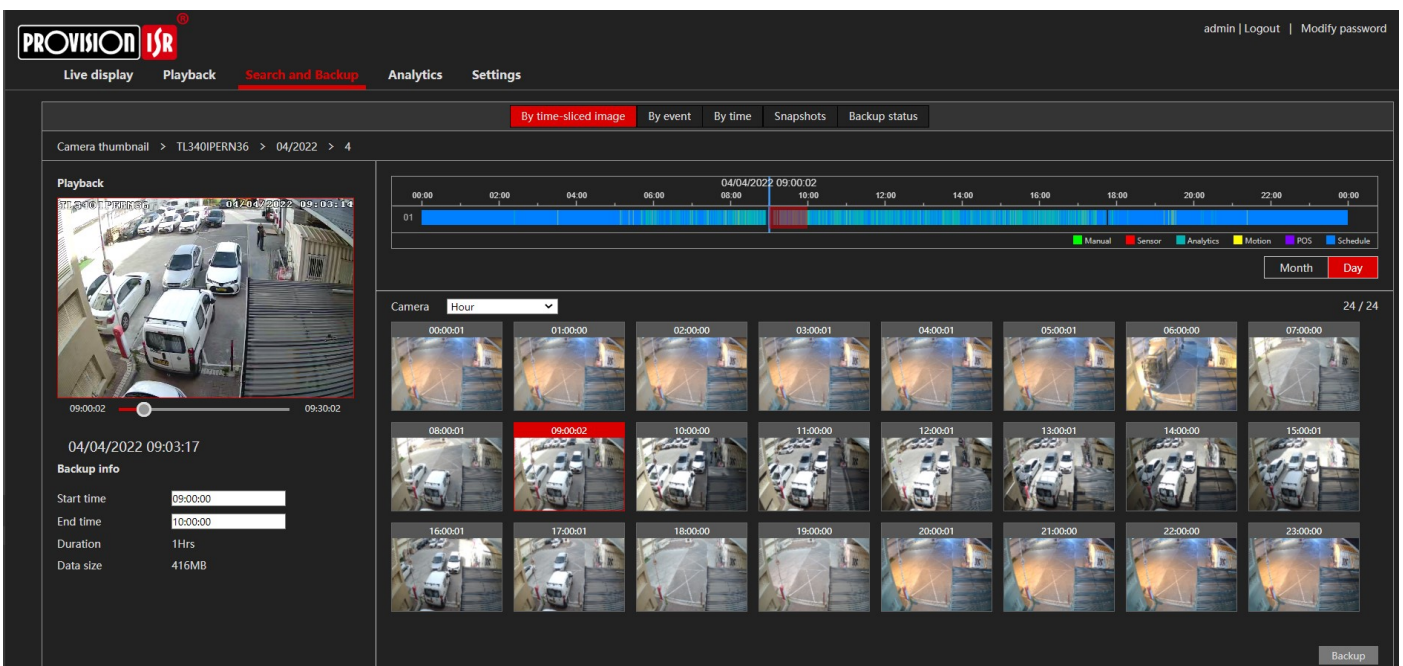
2) AUDIO BROADCAST TO SUPPORTING IPC

You can now use the Ossia as a simple PA (Public Announcement) system by choosing the supporting IP cameras (with audio out) and broadcasting audio to them directly from the NVR.



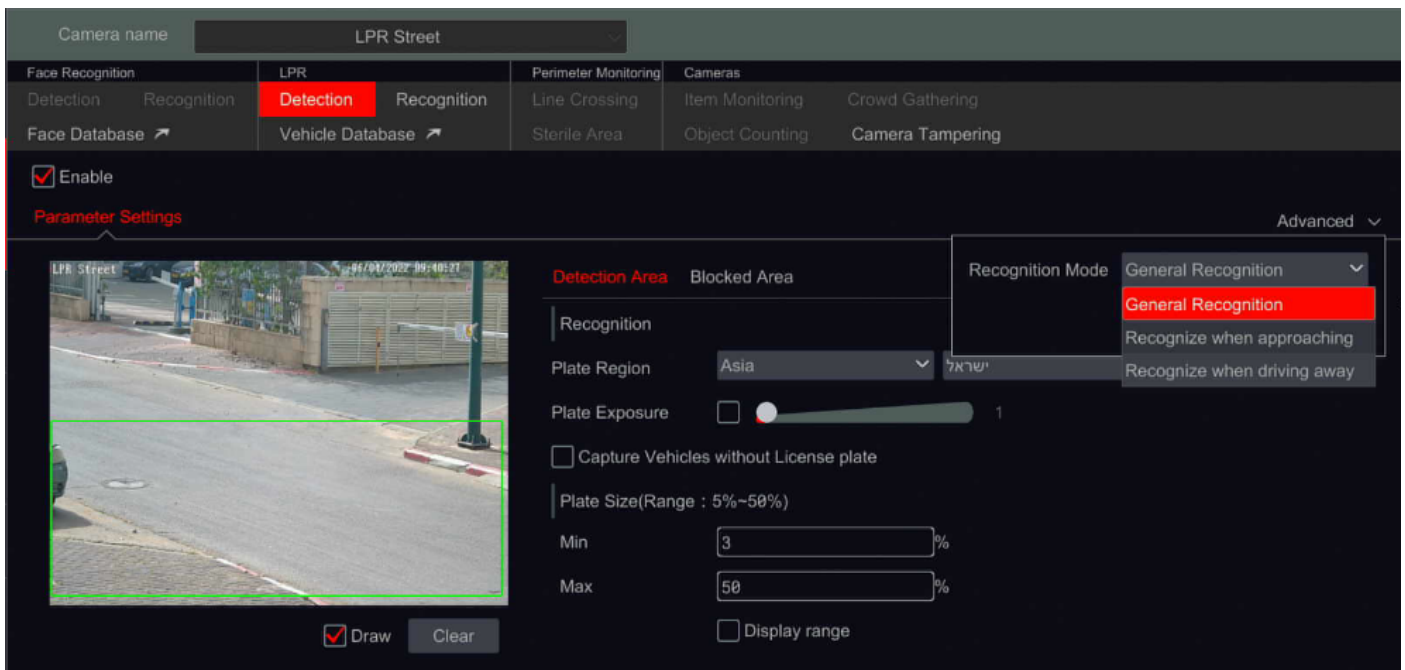
3) REMOTE TIME-SLICE IMAGE SEARCH

The advanced search method is now available in modern H5 browsers (Chrome, Safari, Firefox, Edge, Etc.)



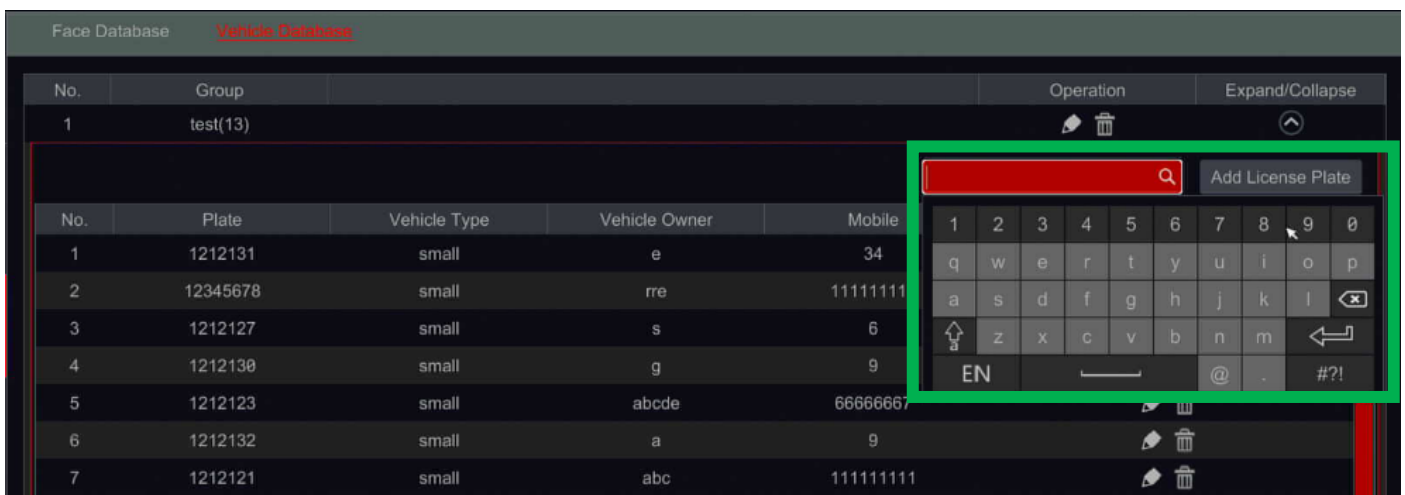
4) ADVANCED LPR CONFIGURATION

There is no longer a need to access the LPR directly to change advanced settings. Instead, the LPR camera configuration options are now accessible from the NVR interface.



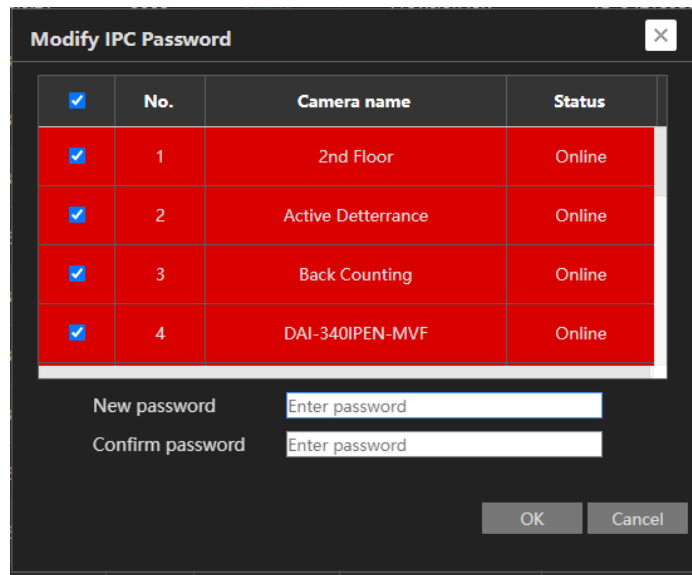
5) LPR DATABASE SEARCH

We've added the ability to search for people within the vehicle database for simpler management operations.



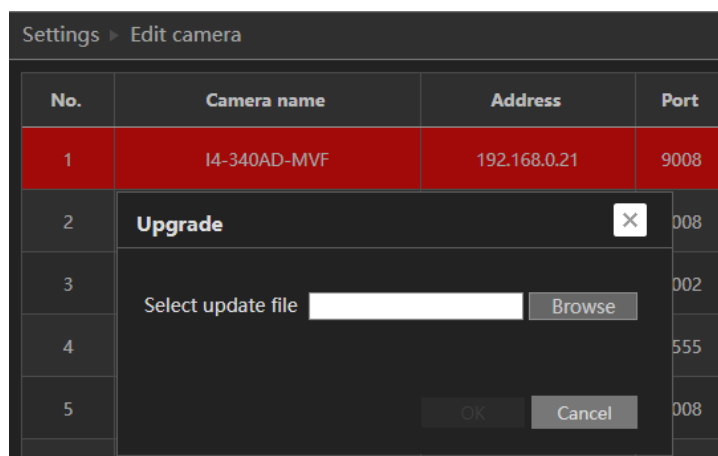
6) REMOTE IPC PASSWORD CHANGE

With the growing concern for cyber-safety and security, we now allow the user to change the IPC password by batch configuration remotely.



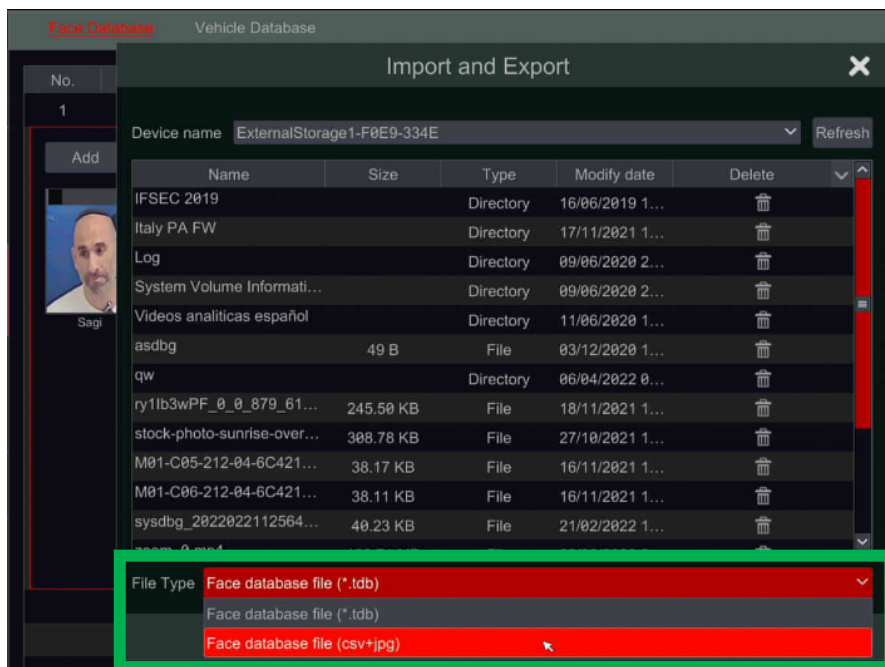
7) REMOTE IPC FIRMWARE UPDATE

IP cameras connected to the NVR by PoE/Network can be updated directly through the NVR interface. This significantly improves the installer's flexibility and ability to troubleshoot and fix technical issues related to the IPCs remotely.



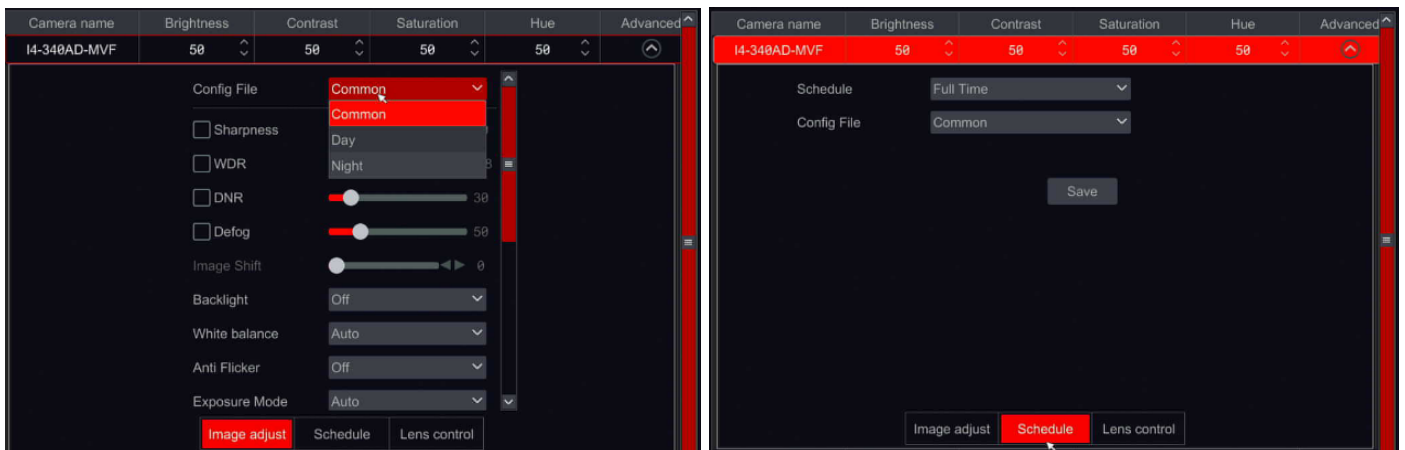
8) SIMPLE FACE DATABASE EXPORT

Up until now, there was only a possibility to export the face database by an encrypted file that other Ossia NVRs could only use. We now added the ability to export the face database by simple unencrypted CSV+Jpeg files so that it could be imported to other software and used for different integrations as well.



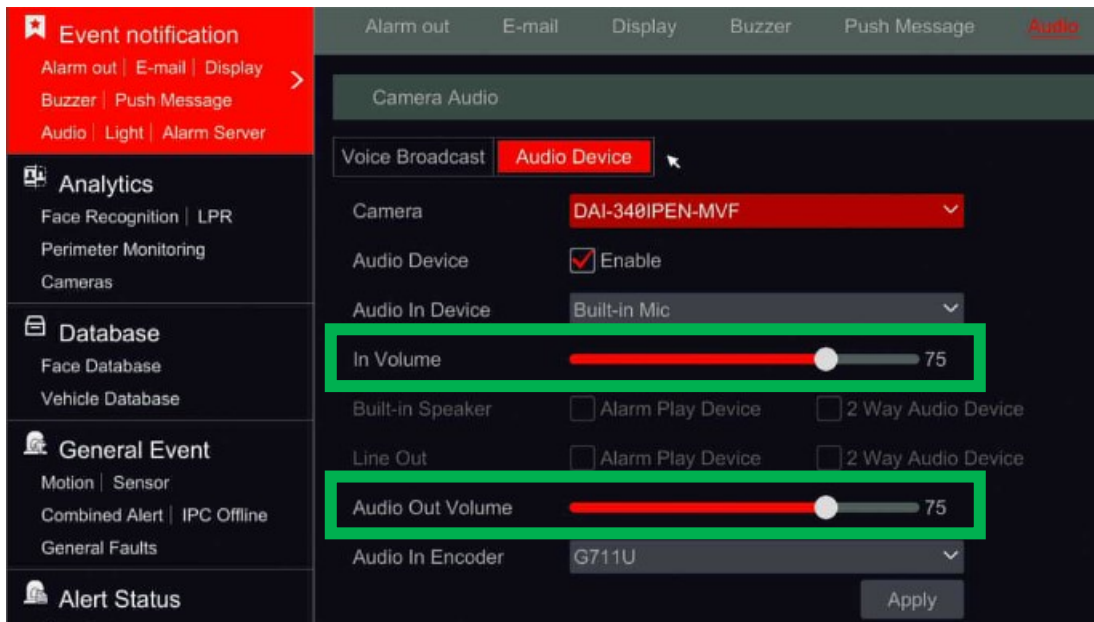
9) ADVANCED IPC IMAGE CONFIGURATION

There is no longer a need to access the IPC directly to change advanced settings. The camera's image configuration options are now accessible from the NVR interface.

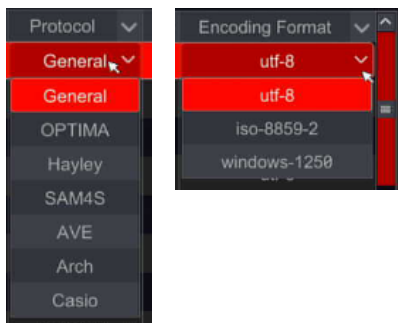


10) IPC AUDIO VOLUME SETTINGS

The NVR can control the camera audio level of input and output (If applicable).



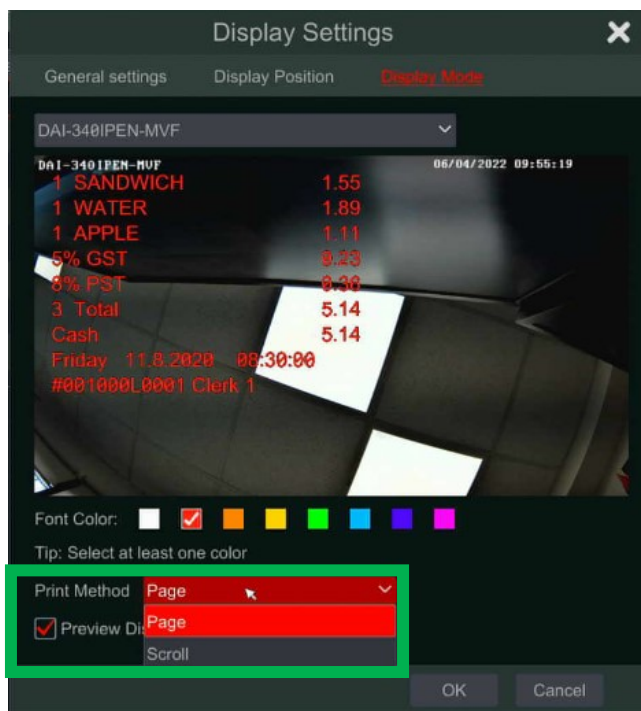
11) POS "GENERAL" PROTOCOL & ENCODING FORMATS



The "general" POS protocol and additional encoding options make the NVR compatible with most POS brands. The POS is now easier to configure, and it reduces technical support requests regarding the POS configuration.

12) POS ON-SCREEN DATA SCROLL

When long segments of POS data are received, the NVR can now scroll it rather than switch pages.



13) 12H TIME SUPPORT FOR IPC

The NVR now supports a 12-hour time format for supporting IPC. It cannot be set individually for a specific camera but all the channels.

The screenshot shows the 'OSD settings' interface. On the left, there are configuration options for 'OSD Name' and 'OSD Time', both checked. Below these are fields for 'Camera' (Office DDA), 'Camera name' (Office DDA), 'Date format' (Day/Month/Year), 'Time format' (12-hour), 'Water Mark' (Off), and 'Water Mark Character'. On the right, a table lists camera channels with columns for 'OSD Time', 'Date format', 'Time format', 'Water Mark', 'Water Mark Cha.', and 'Address'. A dropdown menu for 'Time format' is open, showing '24-hour' and '12-hour' options, with '12-hour' selected. The table contains 13 rows of camera data.

OSD Time	Date format	Time format	Water Mark	Water Mark Cha.	Address
On	Day/Month/Y...	--	24-hour		192.168.0.21
On	Day/Month/Y...	--	12-hour		192.168.0.119
On	Day/Month/Y...	12-hour	Off		192.168.0.178
On	Day/Month/Y...	12-hour	Off		192.168.0.153
On	Day/Month/Y...	12-hour	Off		192.168.0.42
On	Day/Month/Y...	--	Off		192.168.0.115
On	Day/Month/Y...	--	Off		192.168.0.111
On	Day/Month/Y...	12-hour	Off		192.168.0.126
On	Day/Month/Y...	12-hour	Off		192.168.0.63
On	Day/Month/Y...	--	Off		192.168.0.20
On	Day/Month/Y...	--	Off		192.168.0.161
On	Day/Month/Y...	--	Off		192.168.0.163
On	Day/Month/Y...	12-hour	Off		192.168.0.165
On	Day/Month/Y...	--	Off		192.168.0.231

14) MP4 VIDEO BACKUP FORMAT

The NVR now supports unencrypted backup in MP4 video format and the AVI format.

The screenshot shows the 'Backup' dialog box. At the top, it displays 'Device name' as 'ExternalStorage1-F0E9-334E' and a 'Refresh' button. Below this, it shows storage information: 'Free:6.65 GB, All:7.49 GB'. A table lists files and directories with columns for 'Name', 'Type', 'Size', and 'Modify date'. At the bottom, there is a 'Format' dropdown menu with 'Private' selected, and a sub-menu is open showing 'AVI', 'MP4', and 'Private' options. The 'MP4' option is highlighted. Other buttons include 'New folder', 'Delete', 'Backup', and 'Cancel'.

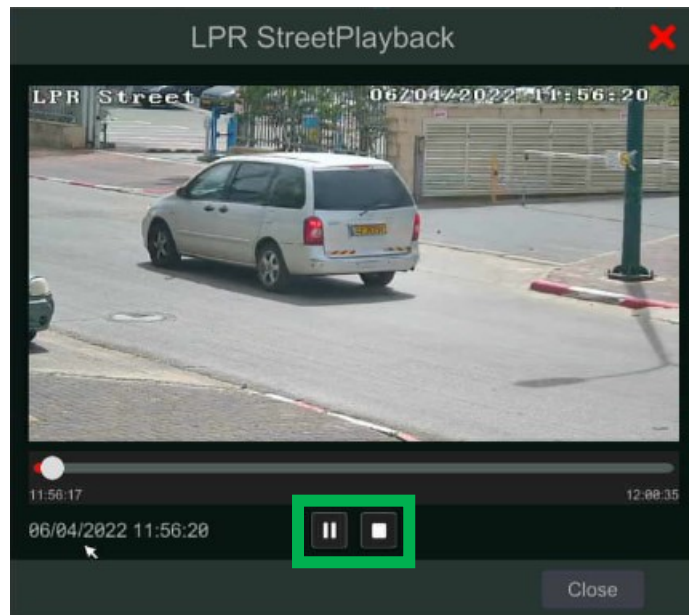
Name	Type	Size	Modify date
IFSEC 2019	Directory		2019-06-16 15:00:44
Italy PA FW	Directory		2021-11-17 10:46:58
Log	Directory		2020-06-09 23:29:10
System Volume Informati...	Directory		2020-06-09 20:38:16
Videos analiticas español	Directory		2020-06-11 18:31:56
asdbg	File	49 B	2020-12-03 16:48:22
qw	Directory		2022-04-06 09:51:30
ry1b3wPF_0_0_879_61...	File	245.50 KB	2021-11-18 18:10:48
stock-photo-sunrise-over...	File	308.78 KB	2021-10-27 14:17:18

15) INCREASED ONLINE USERS CAPABILITY

All NVRs supporting up to 32ch (Not included) will support 64 online users. NVRs supporting 32ch and above will support 128 online users.

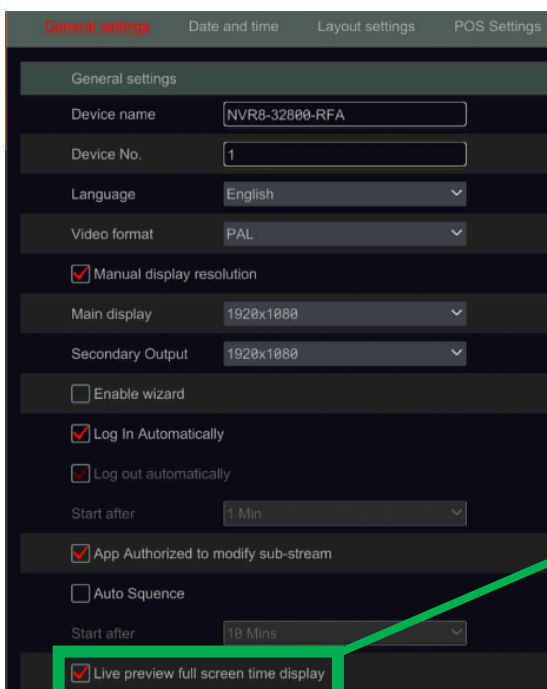
16) INSTANT PLAYBACK POPUP PAUSE/STOP

Playback pop-up windows now contain basic video controls.



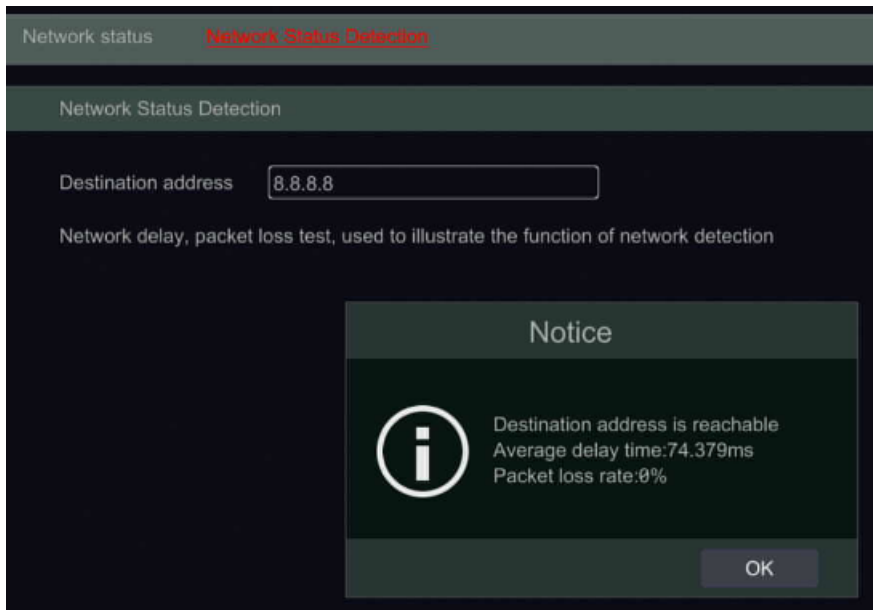
17) FULL SCREEN VIEW DATE/TIME OSD

When switching to a full-screen view, the user can enable/disable the time/date OSD.



18) INTERNET CONNECTIVITY TEST

We have integrated a "ping" command to the UI, so now you can check the NVR's connectivity to an IP or domain.



19) DEVICE SERIAL NUMBER ON THE DEVICE INTERFACE (PRODUCTION ONLY)

The product's serial number will appear on the "Basic information" tab in the NVR. This feature is only applicable to production devices only. Devices updated from a lower version will not display it.

