

TECHNICAL ANNOUNCEMENT

October 2022

SUBJECT

NVR v1.4.7 Experience the improved Ossia NVR

Ossia NVR v1.4.7:

LIST OF IMPROVEMENTS

1) BURGLAR ALARM LINKAGE

From now on, your **CCTV** and **Alarm systems** are connected!

Use your burglar **alarm system** to start/stop all NVR triggers automatically.

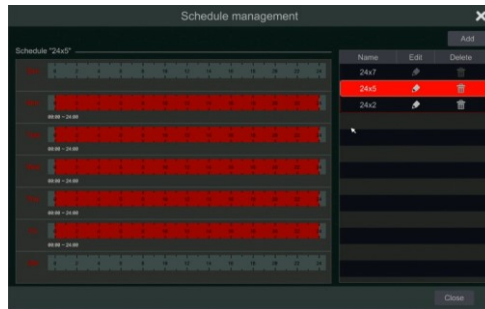
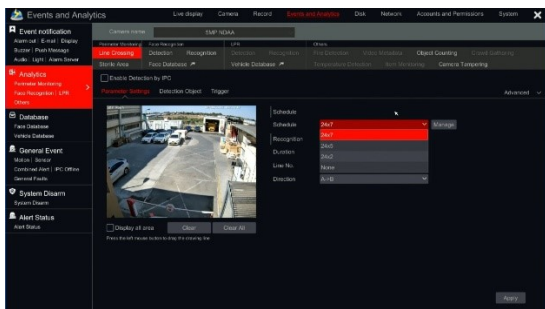
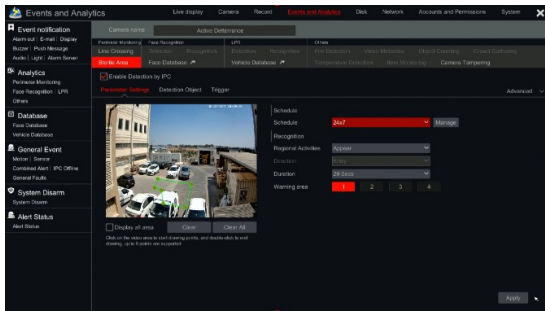
Control triggers (such as recording, **push notifications**, sirens Etc.) with the **arm/disarm** function on any burglar system.

The screenshot shows the 'Events and Analytics' configuration page for 'Burglar Alarm Linkage'. The interface includes a sidebar with navigation options like 'Event notification', 'Analytics', 'Database', 'General Event', 'Burglar Alarm Linkage', and 'Alert Status'. The main content area is divided into sections: 'Burglar Alarm' with an 'Enable' checkbox checked, 'Arming Settings' with a 'Status' dropdown set to 'Bypassed' and an 'Activate' button, and a table for 'Apply for' linkages. The table lists various sensors and their corresponding inactive triggers, with 'Configure' and 'Delete' buttons for each row. A note at the bottom states: 'While the feature is active and burglary alarm is disarmed, the configured linkages above will be inactive.' An 'Apply' button is located at the bottom right of the configuration area.

Camera/Sensor	Inactive Triggers	Configure	Delete
IPCamera	None	Configure	Delete
Active Deterrence	All	Configure	Delete
DAI-340IPEN-28	All	Configure	Delete
Office DDA	All	Configure	Delete
BMV-32BSRN-36	All	Configure	Delete
Sensor2	All	Configure	Delete

2) DDA EVENT SCHEDULING

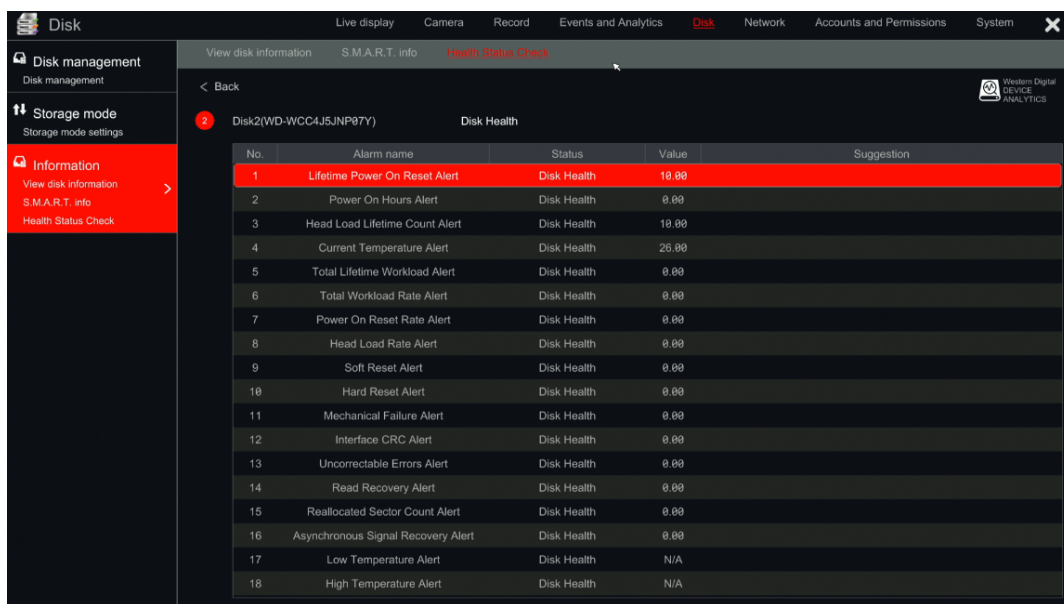
Available now on your NVR, and not just your IP camera! You can set separate schedules for DDA events to trigger alerts at specific times only.



3) WESTERN DIGITAL PURPLE REAL-TIME MONITORING

Get a live health status check for the “WD Purple” series disks, including suggestions for required actions.

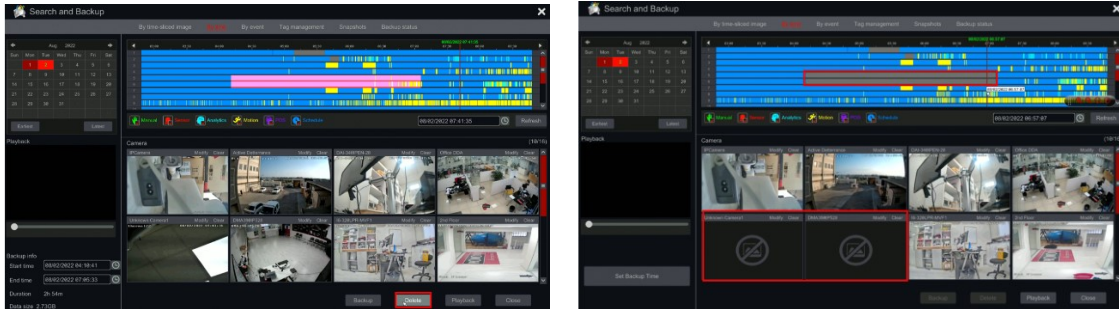
Available also on the web interface.



4) GDPR: FILE DELETION

To comply with Global Data Protection Regulations (GDPR), we now have a **File** deletion feature (Admin Credentials must be provided.)

Mark and delete:

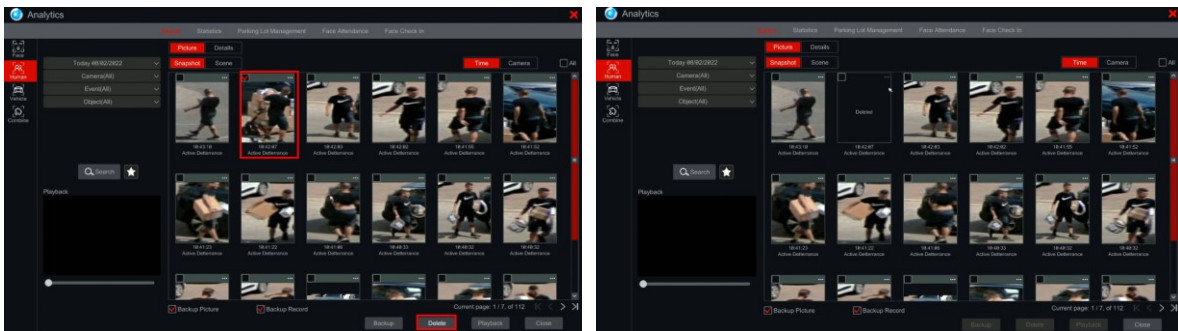


5) GDPR: IMAGE DELETION

The new 1.4.7 version, complies with the Global Data Protection Regulations (GDPR) and allows for specific **image** deletion (Admin Credentials must be provided.)

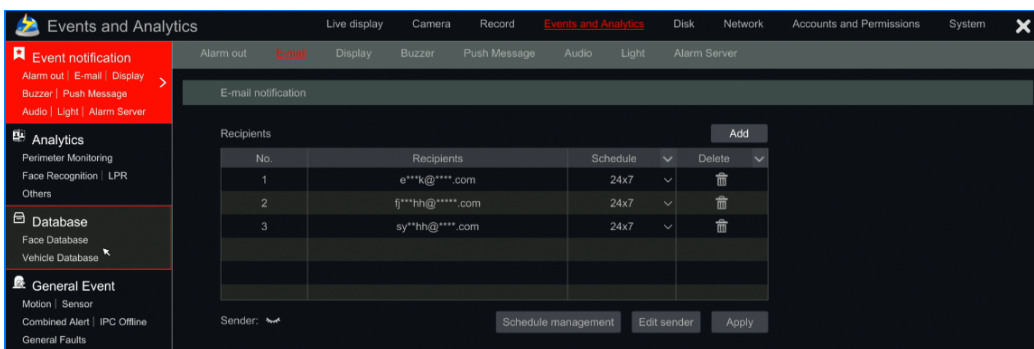
Choose one or multiple images for deletion:

See the empty space after deletion:



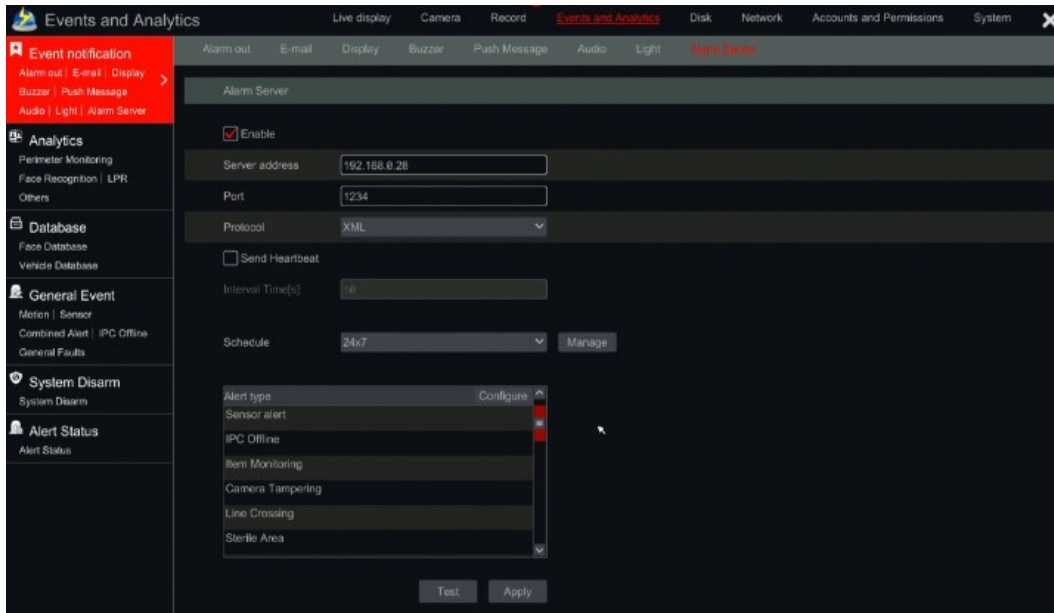
6) GDPR: HIDDEN PERSONAL INFORMATION

Starting from FW 1.4.7, and under the GDPR rule. security is increased, and the NVR will hide private personal information such as license plates, e-mail addresses, face DB names and more.



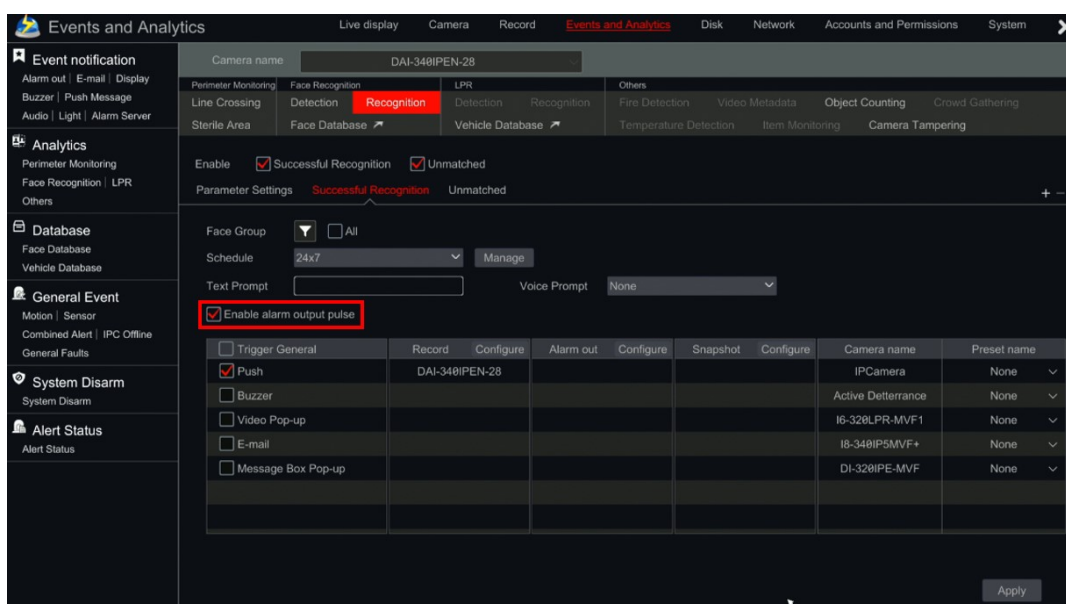
7) 3RD PARTY INTEGRATION

The new 1.4.7 supports simple integrations with 3rd party platforms. The new "alarm server" feature will allow you to send any events of your choice to a 3rd party platform that supports XML format.



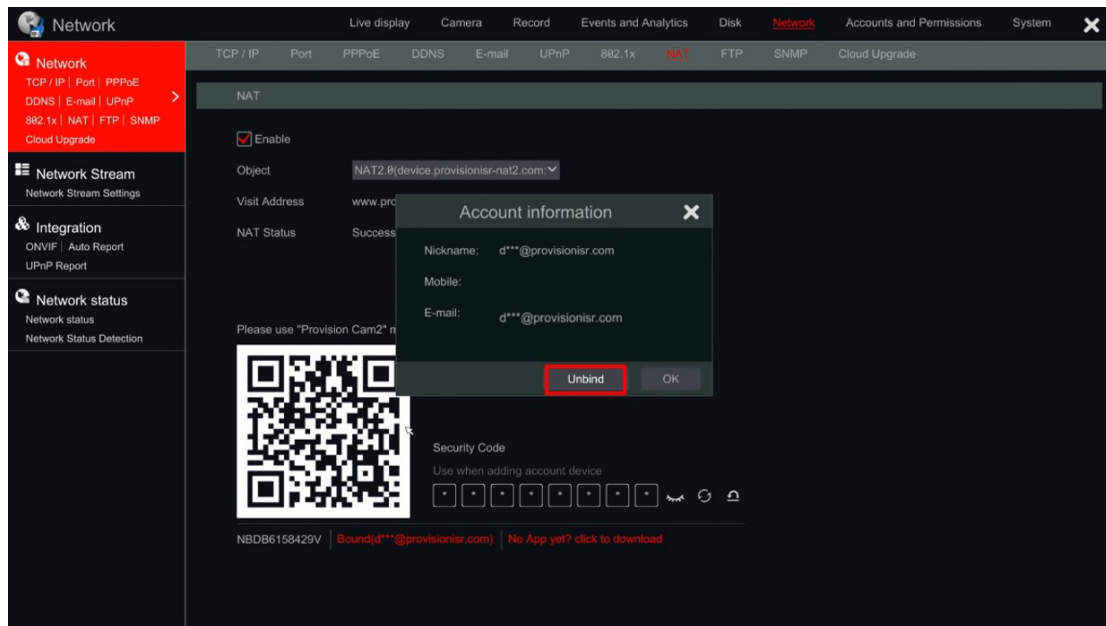
8) ALARM OUTPUT PULSE

The alarm output pulse is an advanced method of verifying the alarm trigger XXXX; this is used in gate control, burglary systems and more. The NVR is capable of sending 2 quick pulses instead of 1.



9) UNBIND APP FROM AN NVR

A device that was bound using the “Provision Cam2” App can now be unbound using the NVR as well (Admin Credentials must be provided.)



10) SUBSTREAM PARAMETER OVERVIEW

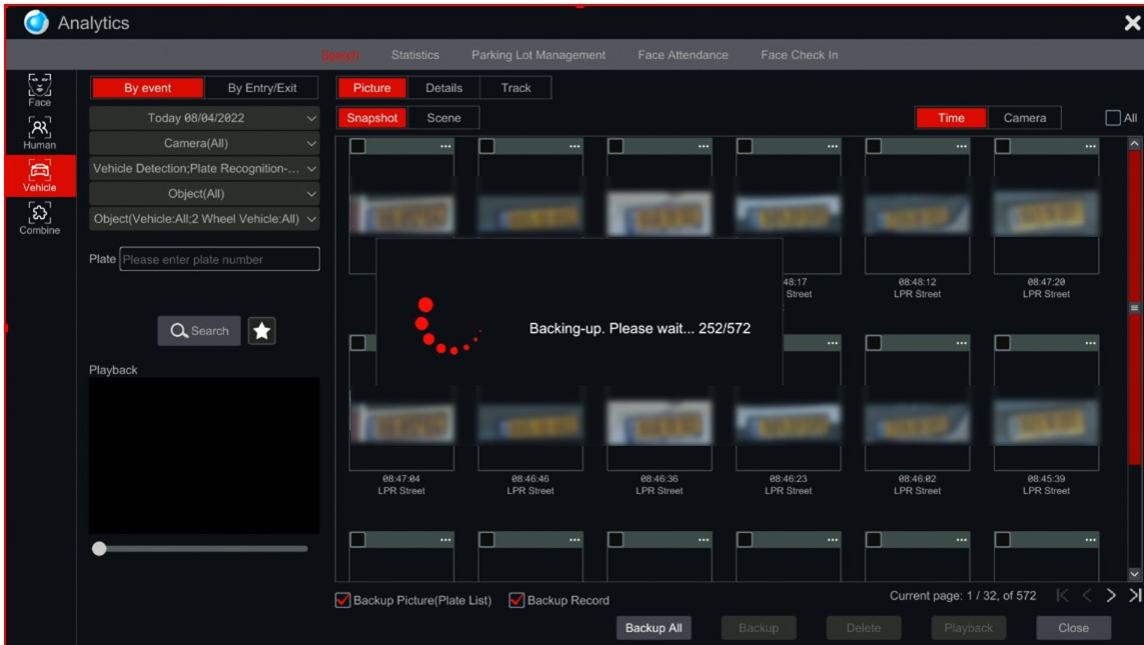
The auto-recorded substream information is easily viewable for better HDD and bandwidth planning.

The screenshot shows the NVR's Record settings page, specifically the 'Record Substream' tab. The table below displays the substream parameters for various cameras.

Camera name	Stream type	Encode	Resolution	FPS	Bitrate
IPCamera	Sub-stream	H.265	704x576	6	128Kbps
Active Deterrence	Sub-stream	H.265	704x576	25	512Kbps
DAI-340IPEN-28	Sub-stream	H.265	704x576	25	512Kbps
Office DDA	Sub-stream	H.265	704x576	25	512Kbps
BMV-320SRN-36	Sub-stream	H.265	704x576	25	512Kbps
thermal22	Sub-stream	H.265	704x576	25	512Kbps
I6-320LPR-MVF1	Sub-stream	H.265	704x576	25	512Kbps
Z4-25IPE-4(IR)	Sub-stream	H.265	704x576	25	512Kbps
Sales Desk	Sub-stream	H.265	704x480	25	512Kbps
I4320IPE36	Sub-stream	H.265	704x480	25	512Kbps
BX291IP5	Sub-stream	H.265	704x576	25	512Kbps
DMA390IP528	Sub-stream	H.265	704x576	25	512Kbps
I8-340IP5MVF+	Sub-stream	H.265	704x576	25	512Kbps
DI-320IPE-MVF	Sub-stream	H.265	704x576	25	512Kbps
2nd Floor	Sub-stream	H.265	704x576	25	512Kbps

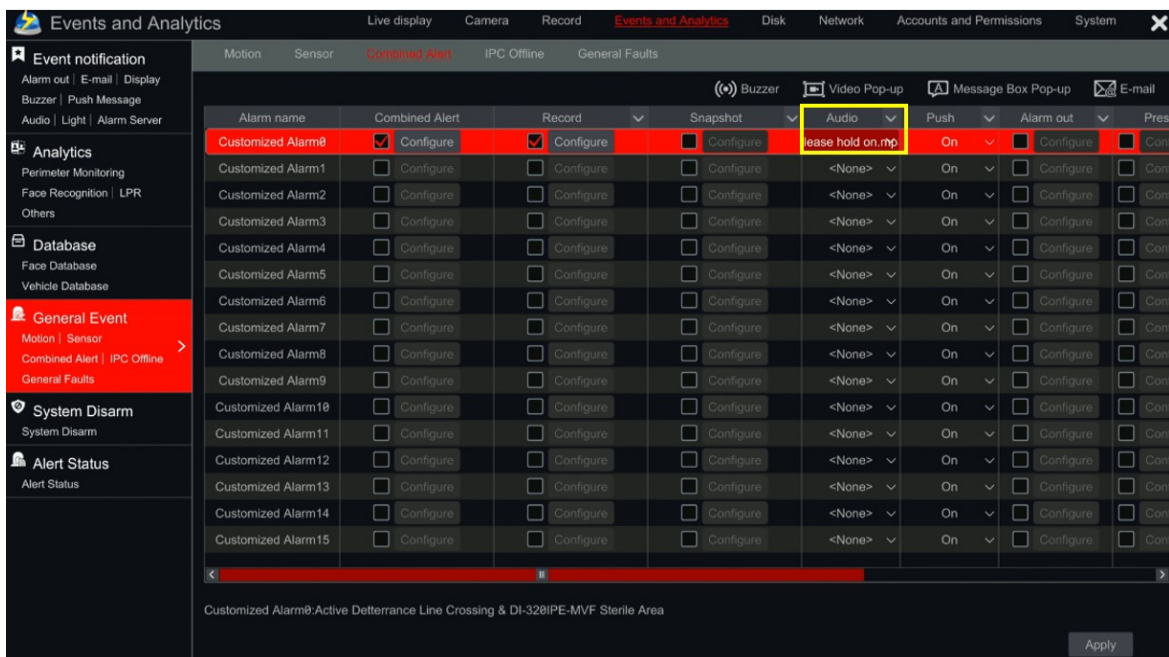
11) BACK UP ALL LICENSE PLATE RESULTS

Starting from 1.4.7, you can export with a single click all the discovered license plate images into a USB flash drive for backup reasons.



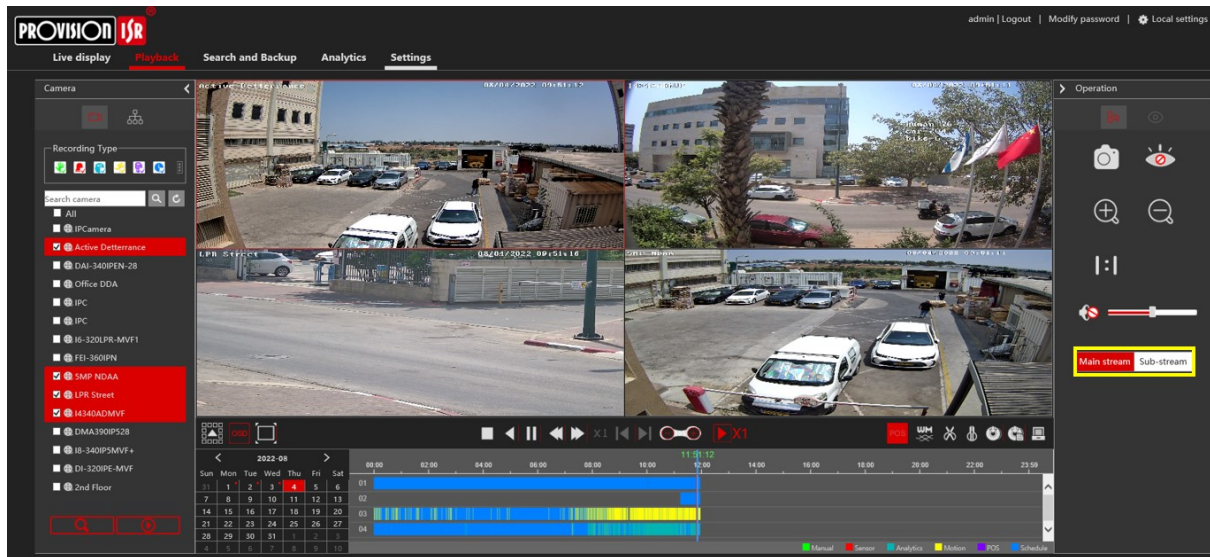
12) AUDIO TRIGGER FOR COMBINED ALERT

Starting from 1.4.7, you can trigger an audio message for a combined alert, adding yet another effective way of alerting.



13) CHOOSABLE REMOTE PLAYBACK STREAM (MAIN/SUB)

Starting from 1.4.7, you can choose which stream to view and download! Allowing for better control when backing up records.



General improvements:

- Alarm server – corrected the alarm type to point to the specific alarm type.
- Alarm box – parameters are saved after the alarm box is disconnected.
- Dynamic code removal – adding an unbound device can be done via the App.

General bug fixes and system stability increase.