



Now you can see!

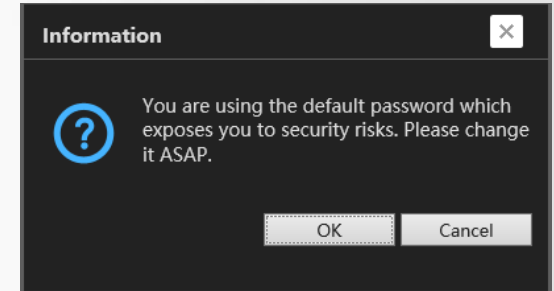
 **ssia**

DVR/NVR v1.2

Release Notes

Improved Login Security

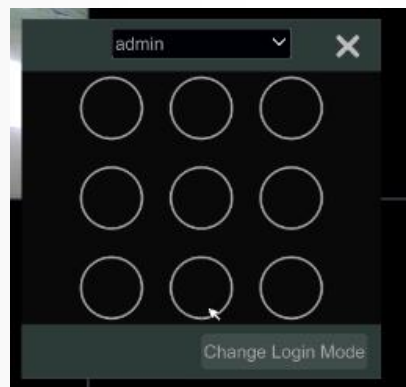
- The system will show password strength and prompt the user to change password if kept on default (admin/123456)



- 5 Wrong login attempts **from remote** will block login for a pre-defined duration.

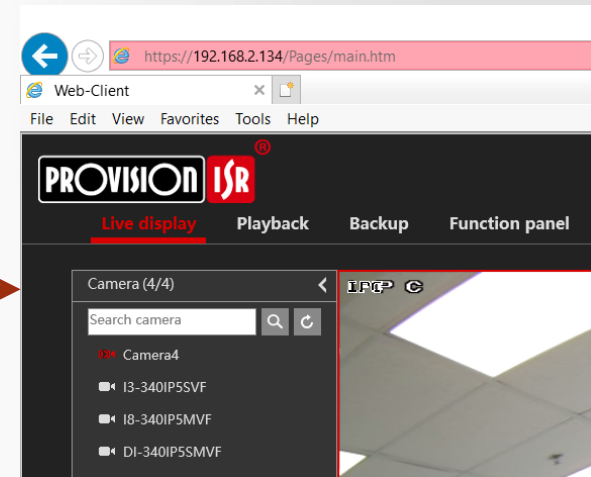
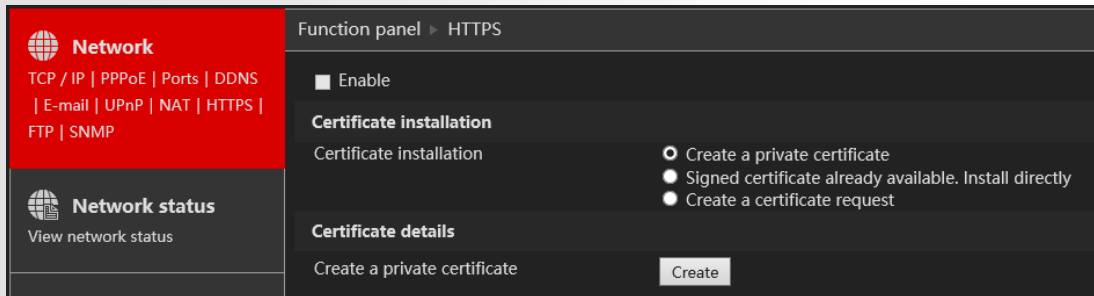
Failed to log in. Reason: wrong username or password. You have 4 attempt(s) left.

- Pattern lock support for easier local login.



HTTPS Support

- v1.2 support secured and encrypted data transfer between the device and the computer. The HTTPS is available for IE connection only. The certificate is generated by the device and not registered globally.



FTP Support

- Support uploading of alarm video and snapshots to an FTP server.
- Uploading can be based on event or by schedule.
- The upload will be done from the HDD and not directly to the FTP

Function panel ▶ FTP

FTP

Enable

Server address Ports

Username Password Anonymous

Max File Size M Remote Directory

Uploading Settings

No.	Camera name	Uploading record					Uploading Image	
		Schedule	Motion	Analytics	Sensor	Active	Stream type	Snap
1	IPCamera	24x7	Off	Off	Off	Off	Sub-stream	Off
2	DL-340IP55VF	24x7	Off	Off	Off	Off	Sub-stream	Off
3	IPC	24x7	Off	Off	Off	Off	Sub-stream	Off
4	IPC	24x7	Off	Off	Off	Off	Sub-stream	Off
5	DL-340IP55MVF	24x7	Off	Off	Off	Off	Sub-stream	Off
6	IX-201IP5	24x7	Off	Off	Off	Off	Sub-stream	Off
7	DL-390IP5VF	24x7	Off	Off	Off	Off	Sub-stream	Off

Push Notification Customization

Schedule

- Push notification can now be enabled by a pre-defined schedule.
- Notification will be sent based on the schedule only.

Function panel ▶ Push Message

Push Message

Enable

Push Schedule: 24x7, 24x5, 24x2, <None>

Push Server Status: Disable

Test Apply

Selective Activation

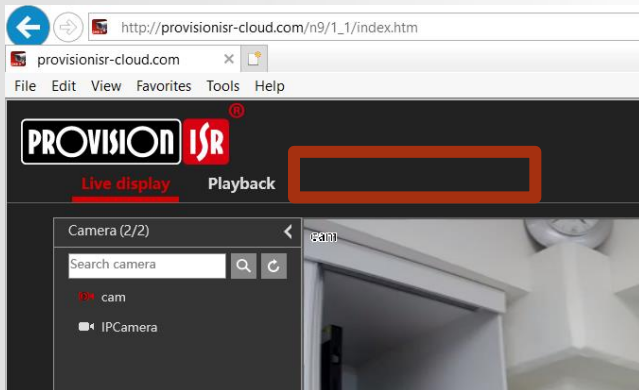
- User can now choose from the interface which alarms will trigger push notifications (regardless of the schedule)

Event type	Push
IP address conflict	On
Disk IO error	On
Disk full	On
Illegal access	On
Network disconnected.	On
No Disk	On
HDD was removed	On

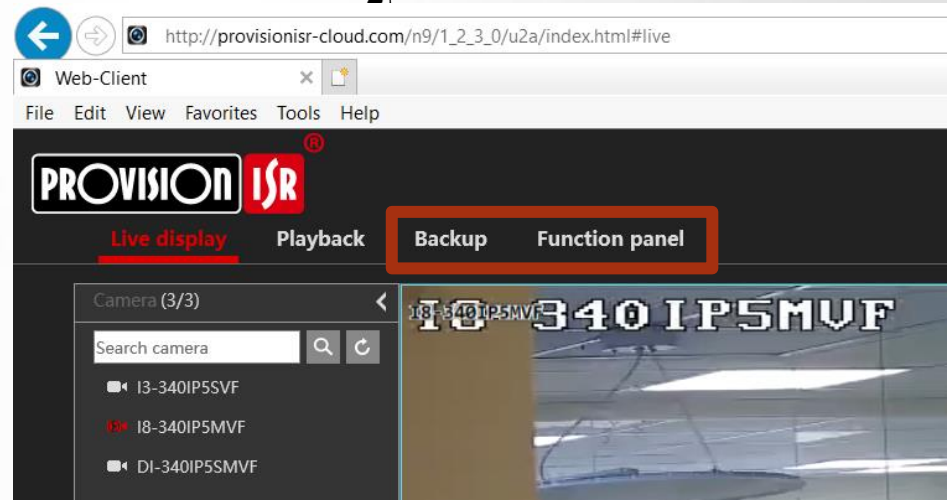
Cloud Interface Improvements

- The cloud interface will now offer full capabilities and feature support when working with Ossia v1.2
(Including full configuration and backup capabilities).

ossia v1.1

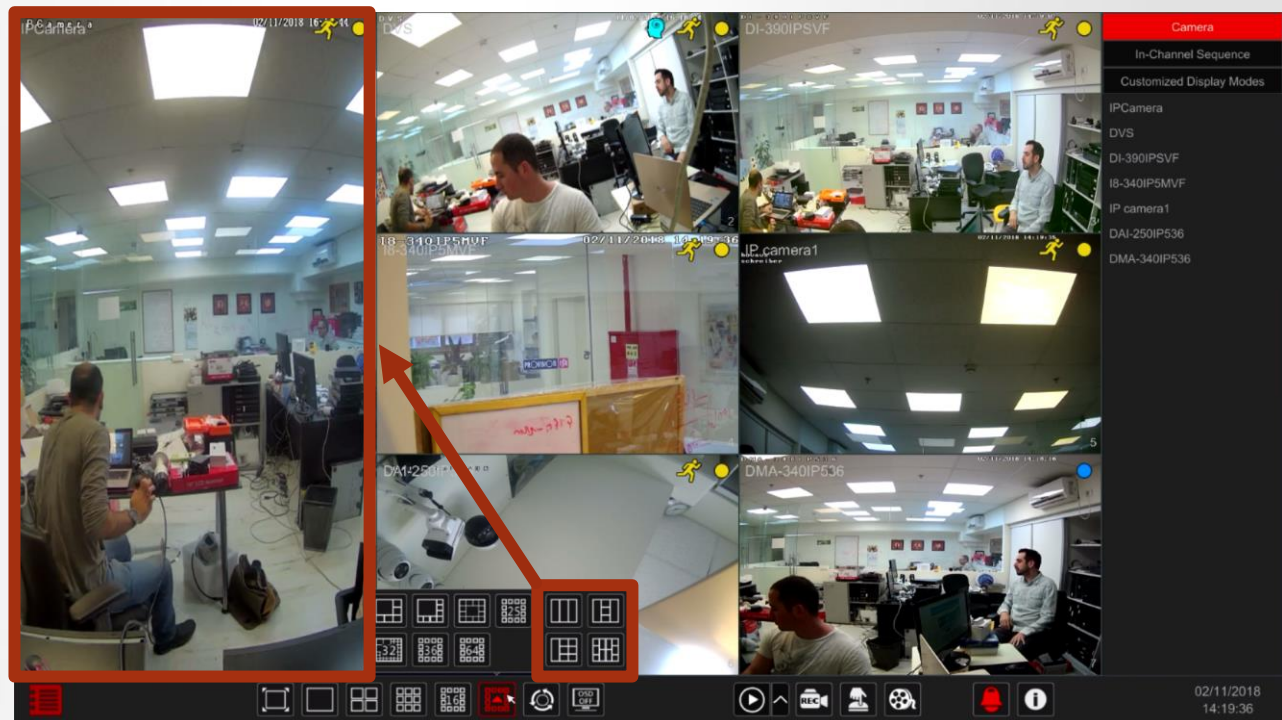
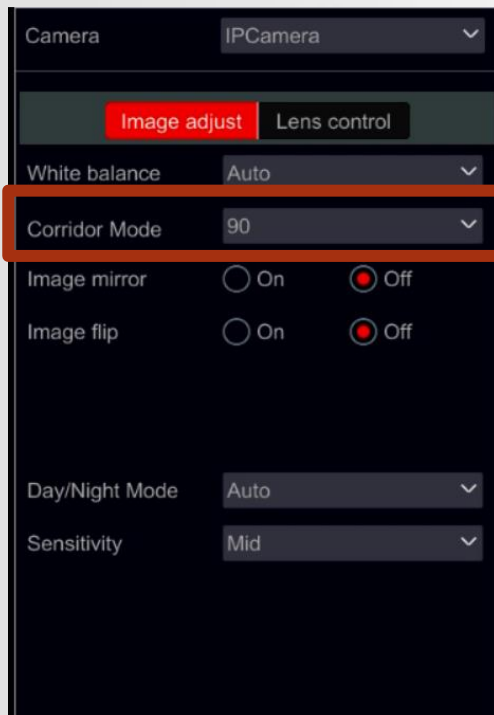


ossia v1.2



Corridor Mode Support

- The NVR will fully support corridor mode including motion alarm etc.
- There will be split modes with corridor orientation.
- This feature is supported by the professional series only (Non X/E Models)



RTSP Channel Input – NVRs Only

- RTSP streams will be possible to add as an IPC channel (Video and Audio only).
- This is useful for IPC that support RTSP, but does not support ONVIF
- Alarms and motion detection are not supported.

Manage Protocol ✕

Protocol identifiers

Status Show name

Stream type	Type	Transfer protocol	Ports	Resource path
Main stream	<input type="text" value="RTSP"/>	<input type="text" value="TCP"/>	<input type="text" value="554"/>	<input type="text"/>
Sub-stream	<input type="text" value="RTSP"/>	<input type="text" value="TCP"/>	<input type="text" value="554"/>	<input type="text"/>

IMPORTANT! Modifying the protocol will affect its associated IP channel.

RTSP Channel Input – NVRs Only

- **NVRs** with v1.2 will be able to record channels from other Ossia devices (NVRs/DVRs v1.0.3 and up) as RTSP channels automatically in the same LAN.
- This feature is available through the “Add camera” interface.

Function panel > Edit camera > Add camera

No.	Device name	Address	Ports	Model	Serial No.
1	SH-8100A-5(1U)(1/12)	192.168.2.134	6036	SH-8100A-5(1U)	00:18:AE:00:4E:23
2	NVR5-4100PX V1.1(1/4)	192.168.2.140	6036	NVR5-4100PX	00:18:AE:5C:14:36
3	SA-8200AHD-2L(MM)	192.168.2.107	6036		00:18:AE:5D:E1:8C

Add Recorder Channel [X]

Address: Domain

Server Port: Channels:

Username: Password:

<input type="checkbox"/>	Remote Channel No.	IP camera	Model
<input type="checkbox"/>	1		SH-8100A-5(1U)
<input type="checkbox"/>	2		SH-8100A-5(1U)
<input type="checkbox"/>	3		SH-8100A-5(1U)

Dynamic Hybrid – DVRs Only

- DVR Hybrid capabilities will now be flexible.
- Let's take SH-8100A-4(1U) For example:

ossia v1.1

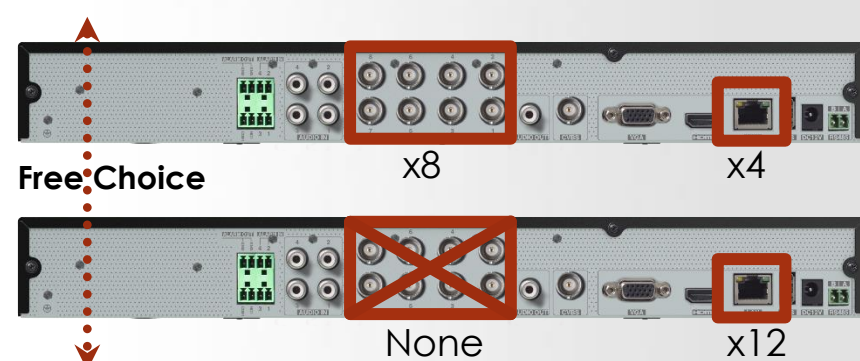
8CH 4in1 + 4CH IP



Cannot be changed

ossia v1.2

From 8CH 4in1 + 4CH IP



To 0CH 4in1 + 12CH IP

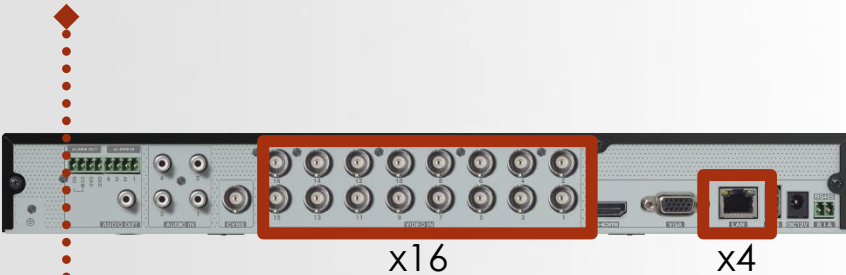
4in1	8	7	6	5	4	3	2	1	0
IP	4	5	6	7	8	9	10	11	12

Dynamic Hybrid – DVRs Only

- ▶ We will take SH-16200A-4(1U) as a second example

ossia v1.1

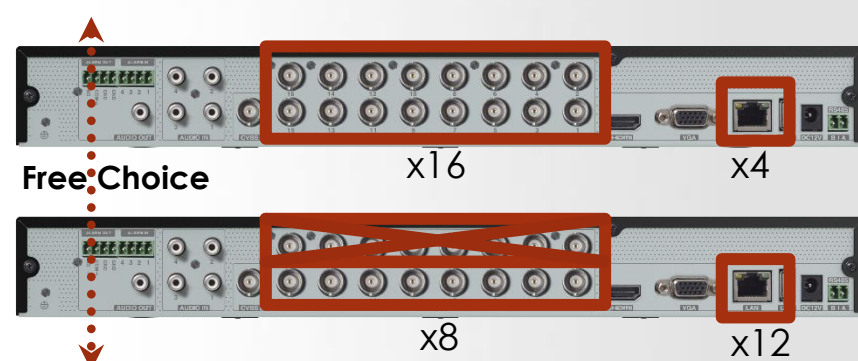
16CH 4in1 + 4CH IP



Cannot be changed

ossia v1.2

From 16CH 4in1 + 4CH IP



To 8CH 4in1 + 12CH IP

4in1	16	15	14	13	12	11	10	9	8
IP	4	5	6	7	8	9	10	11	12

Dynamic Hybrid – DVRs Only

- The availability of Analog/IP channels relies on the device model. Please refer to the device technical specifications for more details.
- DVR incoming bandwidth used for IP cameras will change accordingly.
- Note: support only H.264, IP Channels not available for Spot out.

Dynamic Hybrid – How to set?

- Setting the channel for 4in1/IP will be done through the “Camera Signal” interface under Configuration/Camera/Edit Camera.

Function panel > Camera Signal

Camera	Analog/IP	Signal
[A01]	Analog	Auto
[A02]	Analog	Auto
[A03]	Analog	Auto
[A04]	Analog IP	--
[A05]	IP	--
[A06]	IP	--
[A07]	IP	--
[A08]	IP	--

Security Updates

- This version contains a security update and recommended for all users and devices running Ossia OS.

Other Improvements

- FPS Batch settings
- Sensor Holding Time settings
- NTP settings added to the Startup Wizard
- MVF lens control over web-client
- Default view settings when device is not in use for a defined duration.
- ONVIF improvement to support IPC with ONVIF v2.6.
- Motion alarm can trigger recording for other cameras
- Minor cosmetic and bug improvements

Update Procedure

- Due to massive FW changes which include updating of core components, the update will be available by local flash update only.
- The update will reset all settings to factory default.
- All the update files are available in Provision-ISR website.



Now you can see!

Thank you for choosing Provision-ISR

Our technical support team is available for your needs:

 support@provisionisr.com

 Provision-isr-support