



SDM 1.8.1

QUICK START GUIDE

# Device Manager (SDM)

- A Windows-based executable to manage and configure our edge devices (cameras and video servers).
- The tool automatically locates the devices and offers the user an intuitive interface to set and manage network settings, configure devices, show device status, and perform firmware upgrade.

# Features

- Autodetection of cameras and video encoders
- Network-oriented overview of devices
- Indication of incorrect network settings
- Full control over individual device capabilities (settings)
- Batchwise:
  - Firmware upgrade
  - Time & date settings
  - Common device capabilities
- Backup & restore
- Store and retrieve entire network

# Quick Reference (1)

## STATUS TABS

**All:** Shows all devices.

**Unauthorized:** Devices to which access is denied due to wrong user/password.

**Offline:** Devices no longer available.

**IP Error:** Devices with incorrect network settings.

**Warning:** Devices in an alarm status (for example, Video Loss)

**New:** Devices not detected when the network was loaded.

## TREEVIEW PANE

Organises the devices in all subnets found. A subnet lists all devices within that subnet in the ListView pane.

**Entire Network** lists all devices in the ListView pane.

## BUTTON BAR

'Rescan' (F5) entire network.

## NETWORK INTERFACE

Select the network interface card to be used.

## FILTER

ListView is filtered according to the expression (text) typed in the box. Useful when looking for a specific device.

## LISTVIEW PANE

Lists all devices according to the 'TreeView' setting and the expression in the 'Filter' box.

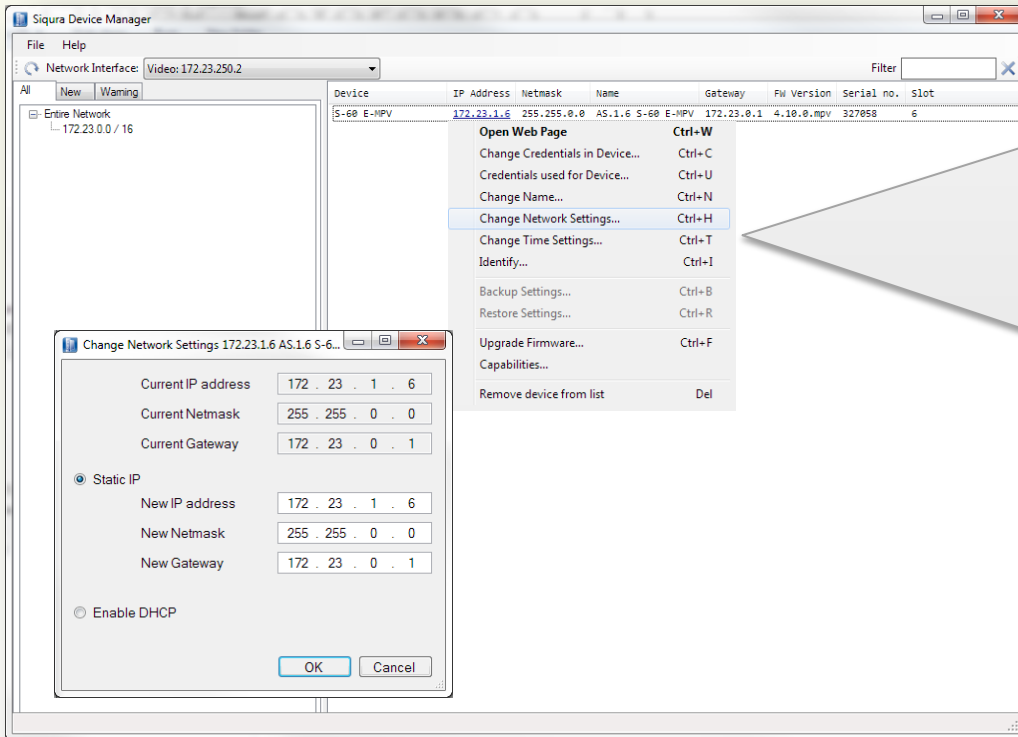
## LISTVIEW PANE

Devices are listed and can be sorted by device type, name, network settings, firmware version, serial nr., and the slot nr. it occupies in an MC11 cabinet.

The screenshot shows a network management application window. At the top, there are tabs for 'New', 'Warning', 'Unauthorized', and 'Offline'. Below the tabs is a treeview on the left showing a network structure with 'Entire Network' expanded to show subnets like '172.23.0.0/16' and 'Unknown Subnet'. The main area is a list of devices with columns for Device, IP Address, Netmask, Name, Gateway, FW Version, Serial no., and Slot. A callout box points to the 'Rescan' button in the top bar. Another callout points to the 'Network Interface' dropdown menu. A third callout points to the 'Filter' input box. A fourth callout points to the device list. A fifth callout points to a zoomed-in view of the device list.

Device	IP Address	Netmask	Name	Gateway	FW Version	Serial no.	Slot
S-60 E-MPV	172.23.1.1	255.255.0.0	AS.1.1 S-60 E-MPV...	172.23.0.1	4.6.1.mpv....	327855	1
S-60 E-MPV	172.23.1.2	255.255.0.0	AS.1.2 S-60 E-MPV...	172.23.0.1	4.6.1.mpv....	327856	2
S-60 E-MPV	172.23.1.3	255.255.0.0	AS.1.3 S-60 E-MPV...	172.23.0.1	4.6.1.mpv....	327857	3
S-60 E-MPV	172.23.1.4	255.255.0.0	AS.1.4 S-60 E-MPV...	172.23.0.1	4.6.1.mpv....	327858	4
S-60 E-MPV	172.23.1.5	255.255.0.0	AS.1.5 S-60 E-MPV...	172.23.0.1	4.6.1.mpv....	327859	5
S-60 E-MPV	172.23.1.6	255.255.0.0	AS.1.6 S-60 E-MPV...	172.23.0.1	4.6.1.mpv....	327860	6
S-60 E-MPV	172.23.1.7	255.255.0.0	AS.1.7 S-60 E-MPV...	172.23.0.1	4.6.1.mpv....	327861	7
S-60 E-MPV	172.23.1.8	255.255.0.0	AS.1.8 S-60 E-MPV...	172.23.0.1	4.6.1.mpv....	327862	8
S-60 D-HC	172.23.2.1	255.255.0.0	AS.2.1 S-60 D-HC	172.23.0.1	1.1.1	287562	1
C-44 EX/IP	172.23.3.2	255.255.0.0	AS.3.2 C40 EX/IP	172.23.0.1	1.1.8	151318	2
S-44 D	172.23.3.3	255.255.0.0	AS.3.3 S-44 D	172.23.0.1	1.2.7	184786	1
S-44 E	172.23.3.4	255.255.0.0	AS.3.4 S-44 E	172.23.0.1	1.2.4	184726	4
S-54 E	172.23.3.7	255.255.0.0	AS.3.7 S-54E-HC	172.23.0.1	1.2.4	184726	4
C-23 E/IP	172.23.3.10	255.255.0.0	AS.3.10 C-23 E/I	172.23.0.1	V3.0.0R02	...	...
S-64 E	172.23.4.4	255.255.0.0	AS.4.4 S-64 E	172.23.0.1	4.14.1	266941	4
TrafficServer	172.23.4.5	255.255.0.0	AS.4.5 TrafficSer...	172.23.0.1	4.14.1	25934	5
HS0820H1-EP	172.23.10.1	255.255.0.0	AS.10.1 HS0820H1-EP	172.23.0.1	HK20120528HSA	000673004865	...
BC22	172.23.10.2	255.255.0.0	AS.10.2 BC22 endu...	172.23.0.1	...	000898028605	...
BC22	172.23.10.3	255.255.0.0	AS.10.3 BC22 Pass...	172.23.0.1	...	000898028606	...
BC62	172.23.10.4	255.255.0.0	AS.10.4 BC62	172.23.0.1	g20110627BNS	00067300275F	...
BC64	172.23.10.5	255.255.0.0	AS.10.5 BC64	172.23.0.1	g20110624HNS	00067300274E	...
BC620DR	172.23.10.6	255.255.0.0	AS.10.6 BC620DR	172.23.0.1	4.0.0	320878	0
CO20P1	172.23.10.7	255.255.0.0	Sicura 820-series	172.23.0.1	HK20140423HSA	000673000852	...
CO20P1	172.23.10.8	255.255.0.0	Sicura 820-series	172.23.0.1	HK20140307HSA	000673000850	...
CO20P1	172.23.10.9	255.255.0.0	Sicura 820-series	172.23.0.1	HK20140307HSA	000673000853	...
EVE ONE	172.23.100.145	255.255.0.0	EVE ONE applicati...	172.23.0.1	master_DR_243	P00038	0

# Quick Reference (2)



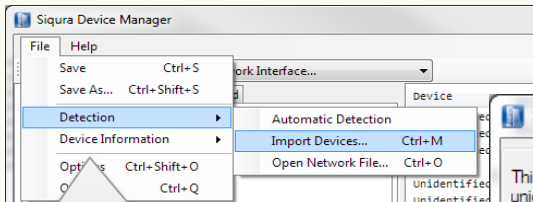
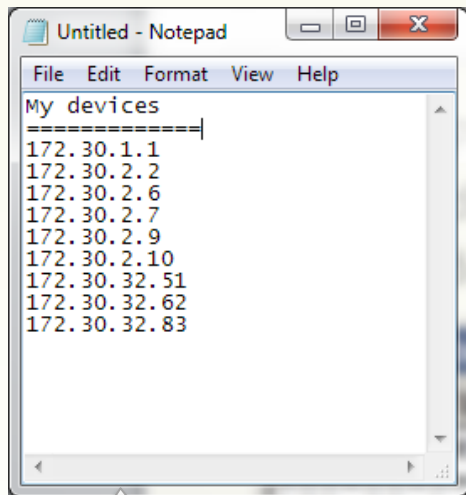
## Shortcut Menu

Shortcuts to:

- Launch the webpage of the device.
- Change the user name / password settings in the device. Also possible for a selected group of devices.
- Set the proper user name / password to access the device. Also possible for a selected group of devices.
- Change the network settings of the device. Also possible for devices with incorrect network settings.
- Change date and time in the device. You may have it synchronise with the date and time of the computer and set an NTP server. Also possible for a selected group of devices.
- *Identify* flashes the power LED on the device.
- Back up and restore device settings and configuration.
- Perform a firmware upgrade per device or group of devices as long as they are of the same 'device type'.
- *Capabilities...* compiles a list of all the capabilities (settings) of the selected device. On selection of more than one device, a list of overlapping capabilities is compiled. See also next page.
- Remove the device from the database. An entire network can be saved and reloaded in the Device Manager. Devices which are removed from the network will be labelled "Offline".

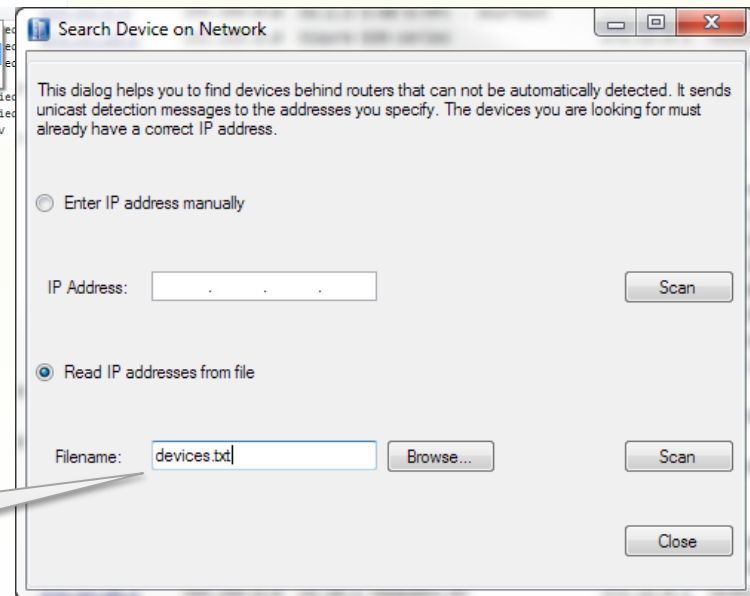
# Batch import of devices

When UPnP is disabled in routed networks, the Device Manager is unable to build a list of all the devices. In this case you need to import a list of devices (IP addresses). After saving the network, importing this batch file is no longer necessary.



Disable  
"Automatic Detection" and  
select "Import Devices..."

Select the text file  
and press 'Scan'.



Create a text file with the IP addresses of the devices, one per line. The first lines, which do not contain an IP address, will be ignored. (For comments)

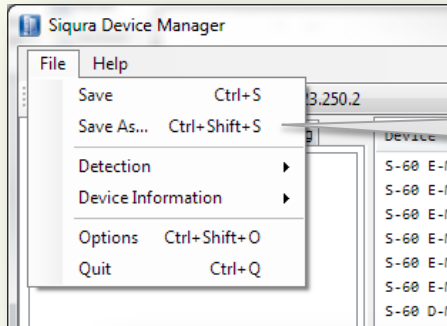
# Batch Configuration - Example

The screenshot shows the Siqura Device Manager interface. The main window displays a list of devices with columns for Device, IP Address, Netmask, Name, Gateway, FW Version, Serial no., and Slot. A selection of devices is highlighted in blue. A 'Settings Tree for 4 devices' dialog is open, showing a tree view of settings. The 'BitrateMode' setting is selected and highlighted in red. A 'Change setting for device' dialog is also open, showing the 'BitrateMode' dropdown set to 'Constant bitrate'.

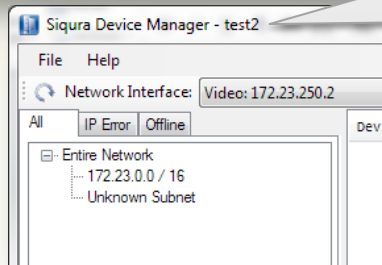
Device	IP Address	Netmask	Name	Gateway	FW Version	Serial no.	Slot
S-60 E-MPV	172.23.1.1	255.255.0.0	AS.1.1 S-60 E-MPV - duurtest	172.23.0.1	4.6.1.mpv.int.201301211101	327055	1
S-60 E-MPV	172.23.1.2	255.255.0.0	AS.1.2 S-60 E-MPV - duurtest	172.23.0.1	4.6.1.mpv.int.201301211101	327056	2
S-60 E-MPV	172.23.1.3	255.255.0.0	AS.1.3 S-60 E-MPV - duurtest	172.23.0.1	4.6.1.mpv.int.201301211101	327057	3
S-60 E-MPV	172.23.1.6	255.255.0.0	AS.1.6 S-60 E-MPV	172.23.0.1	4.10.0.mpv	327058	6
S-60 E-MPV	172.23.1.7	255.255.0.0	AS.1.7 S-60 E-MPV (24 bit audio)	172.23.0.1	master_mpv_DB_118	329676	7
S-60 E-MPV	172.23.1.8	255.255.0.0	AS.1.8 S-60 E-MPV (24 bit audio)	172.23.0.1	master_mpv_DB_118	329690	8
S-60 D-MC	172.23.2.1	255.255.0.0	AS.2.1 S-60 D-MC	172.23.0.1	uri01	287562	1
C-20 D/IP	172.23.2.3	255.255.0.0	AS.2.3 C-20 D/IP				
C-20 D/IP	172.23.2.4	255.255.0.0	AS.2.4 C-20 D/IP				
C-20 D/IP	172.23.2.6	255.255.0.0	AS.2.6 C-20 D/IP				
C-20 D/IP	172.23.2.8	255.255.0.0	AS.2.8 C-20 D/IP				
C-20 D/IP	172.23.2.9	255.255.0.0	AS.2.9 C-20 D/IP				
C-20 D/IP	172.23.2.10	255.255.0.0	AS.2.10 C-20 D/I				
C-20 D/IP	172.23.2.11	255.255.0.0	AS.2.11 C-20 D/I				
C-40	172.23.3.2	255.255.0.0	AS.3.2 C40 EX/IP				
S-	172.23.3.3	255.255.0.0	AS.3.3 S-44 D				
S-	172.23.3.4	255.255.0.0	AS.3.4 S-44 E				
	172.23.3.5	255.255.0.0	AS.3.5 C-20 D/IP				
	172.23.3.6	255.255.0.0	AS.3.6 C-20 D/IP				
	172.23.3.7	255.255.0.0	AS.3.7 S-54E-MC				
	172.23.3.10	255.255.0.0	AS.3.10 C-23 E/I				
	172.23.4.4	255.255.0.0	AS.4.4 S-64 E				
	172.23.4.5	255.255.0.0	AS.4.5 TrafficSer				
	172.10.1	255.255.0.0	AS.10.1 HS0820H1				
	172.10.2	255.255.0.0	AS.10.2 BC22 endu				
	172.10.3	255.255.0.0	AS.10.3 BC22 Pass				
	172.10.4	255.255.0.0	AS.10.4 BC62				
	172.10.5	255.255.0.0	AS.10.5 BC64				
	172.10.6	255.255.0.0	AS.10.6 BC620WDR				
	172.10.7	255.255.0.0	Siqura 820-series				
	172.10.8	255.255.0.0	Siqura 820-series				
	172.10.9	255.255.0.0	Siqura 820-series				
	172.100.145	255.255.0.0	EVE ONE-Applicati				

- Select the devices in the ListView pane
- Right-click your selection, and then click **Capabilities...**
- A "Settings Tree" is built, showing all possible settings. Settings which do not apply to all selected devices are greyed out. Red parameters are "write-only".
- Select the setting which should be changed for all selected devices (for example, set "BitrateMode" to "Variable bitrate non-drop"). Click **OK**.
- All selected devices are set to VBR non-drop.

# Save and Restore a Network



- **Save:**  
Save the found devices - including network settings, user name, and password - in a Network file.



- **Load an existing network file "Open..."**  
Open a network file, such as "**test2.sdmdb**", for example. The title bar shows the name of the opened network file.
- Device Manager searches for the devices listed in this network file.
- ✓ If devices have been added to the network, they are also listed in the **NEW** tab.
- ✓ If devices have been removed or are unreachable in case of network failure, these devices are also listed in the **OFFLINE** tab.



# Backup & Restore

- Make sure to save the network
- To back up: Select devices, and (on the shortcut menu) select Backup Settings .... The configuration settings are saved to a file.
- To restore: Select devices, and (on the shortcut menu) select Restore Settings .... For devices for which a backup is found, a restore is performed. The restore uses the IP address of the device.
- To replace a 'faulty' device: Install the new device. Copy the IP settings, user name, and password from the faulty device. Select Restore Settings ....

# Release Notes

## DEVICE COMPATIBILITY v1.8.1.

- > C-5x and S-5x series video encoders
- > C-6x and S-6x series video encoders and S-60 D decoder
- > C620 and S620 video encoders
- > A-80 and V-30 E
- > HD2x , HD6x, MD2x, and MD6x series dome IP cameras
- > MSD62x and HSD62x series dome cameras
- > BC/FD 6x series box or fixed dome IP cameras
- > BC620 and BC840 series box IP cameras
- > BC820(v2), FD820(v2), IFD820, and HSD820(v2) series 1080p HD IP cameras
- > BC840 series boxed cameras
- > TC620-PID and TC840R1 thermal cameras
- > TrafficPTZ and TunnelCam series cameras
- > EVE ONE, EVE FOUR, EVE 4x4
- > 1002-, 1004- and 1103-series cameras
  
- > Limited support\* for:
- > C-10, C-20, C-23 encoders and decoders
- > C-4x and S-4x series video encoders and decoders
- > BC2x and FD2x series box and fixed dome cameras

*\*Supported functions: Detection in local subnet, Open webpage. For some devices: Change IP address.*

## KNOWN ISSUES

- > S620 D is not supported
- > Simultaneous use of older MX/IP-based TKH Security software interferes with the use of Device Manager.
- > Changing the network interface keeps the devices from the old interface dangling as 'offline'.
- > A device may be listed as 'IP Error' instead of 'Offline' and vice versa.
- > Batch configuration does not work for 1000- and 1100-series cameras.
  
- > VERSION HISTORY
- > 1.4.1 - First commercial release (17-09-2012)
- > 1.5.2 - Added import of list of IP addresses (22-01-2013)
- > 1.6.0 - Added EVE encoders and DST support (01-02-2014)
- > 1.7.0 - Added progress bar for import and scan (17-06-2014)
- > 1.8.0 - Added 1000- and 1100-series cameras (17-05-2016)
- > 1.8.1 - Added new .NET redistributable (19-05-2016)