



# Siquira Device Manager 1.8.1

## QUICK REFERENCE

# Siquira Device Manager (SDM)

- A Windows-based executable to manage and configure Siquira's edge devices (cameras and video servers).
- The tool automatically locates Siquira devices and offers the user an intuitive interface to set and manage network settings, configure devices, show device status, and perform firmware upgrade.

# SDM - Features

- Autodetection of Siquira cameras and video encoders
- Network-oriented overview of devices
- Indication of incorrect network settings
- Full control over individual device capabilities (settings)
- Batchwise:
  - Firmware upgrade
  - Time & date settings
  - Common device capabilities
- Backup & restore
- Store and retrieve entire network

# SDM – Quick Reference (1)

## STATUS TABS

**All:** Shows all devices.

**Unauthorized:** Devices to which access is denied due to wrong user/password.

**Offline:** Devices no longer available.

**IP Error:** Devices with incorrect network settings.

**Warning:** Devices in an alarm status (for example, Video Loss)

**New:** Devices not detected when the network was loaded.

## TREEVIEW PANE

Organises the devices in all subnets found. A subnet lists all devices within that subnet in the ListView pane.

**Entire Network** lists all devices in the ListView pane.

## BUTTON BAR

'Rescan' (F5) entire network.

## NETWORK INTERFACE

Select the network interface card to be used.

## FILTER

ListView is filtered according to the expression (text) typed in the box. Useful when looking for a specific device.

## LISTVIEW PANE

Lists all devices according to the 'TreeView' setting and the expression in the 'Filter' box.

## LISTVIEW PANE

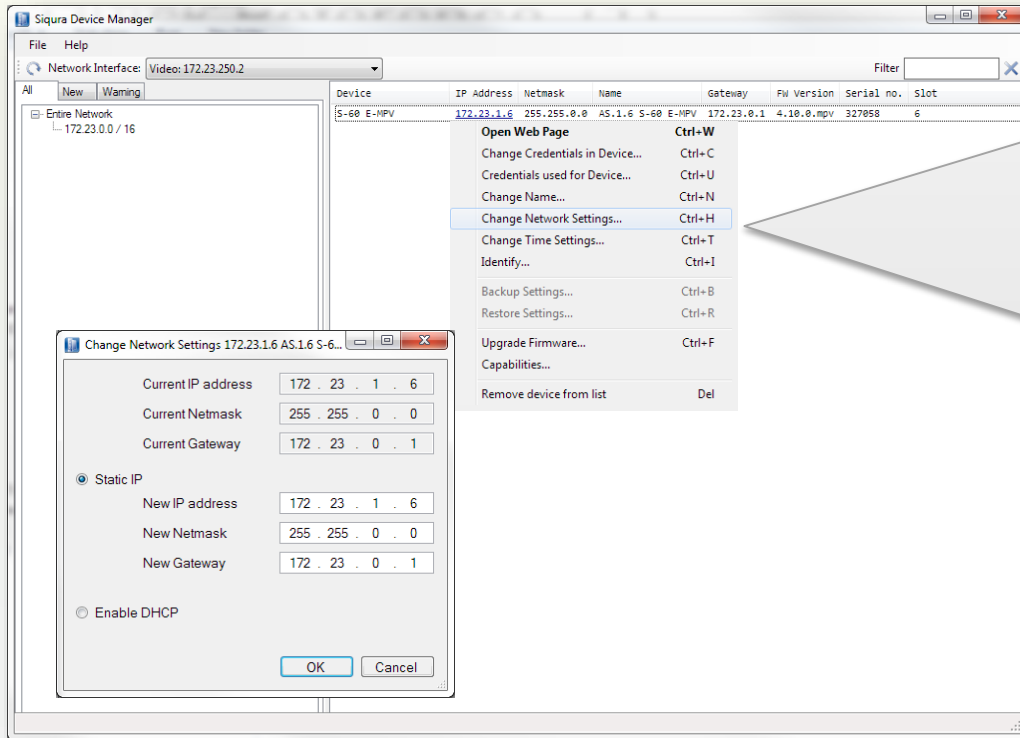
Devices are listed and can be sorted by device type, name, network settings, firmware version, serial nr., and the slot nr. it occupies in an MC11 cabinet.

Device	IP Address	Netmask	Name	Gateway	FW Version	Serial no.	Slot
S-60 E-MPV	172.23.1.1	255.255.0.0	AS.1.1 S-60 E-MPV...	172.23.0.1	4.6.1.mpv...	327055	1
S-60 E-MPV	172.23.1.2	255.255.0.0	AS.1.2 S-60 E-MPV...	172.23.0.1	4.6.1.mpv...	327056	2
S-60 E-MPV	172.23.1.3	255.255.0.0	AS.1.3 S-60 E-MPV...	172.23.0.1	4.6.1.mpv...	327057	3

Device	IP Address	Netmask	Name	Gateway	FW Version	Serial no.	Slot
S-60 E-MPV	172.23.1.1	255.255.0.0	AS.1.1 S-60 E-MPV...	172.23.0.1	4.6.1.mpv...	327055	1
S-60 E-MPV	172.23.1.2	255.255.0.0	AS.1.2 S-60 E-MPV...	172.23.0.1	4.6.1.mpv...	327056	2
S-60 E-MPV	172.23.1.3	255.255.0.0	AS.1.3 S-60 E-MPV...	172.23.0.1	4.6.1.mpv...	327057	3

# SDM – Quick Reference (2)



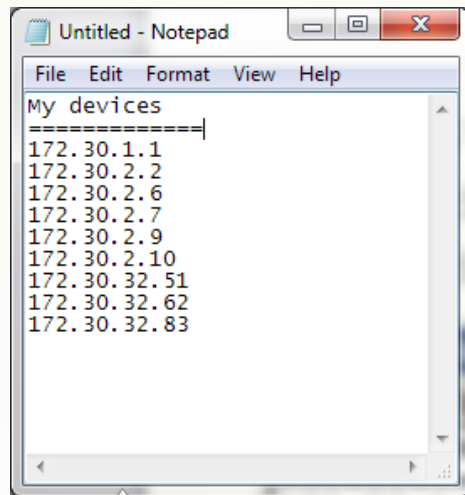
## Shortcut Menu

Shortcuts to:

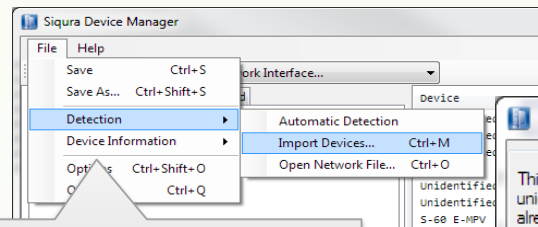
- Launch the webpage of the device.
- Change the user name / password settings in the device. Also possible for a selected group of devices.
- Set the proper user name / password to access the device. Also possible for a selected group of devices.
- Change the network settings of the device. Also possible for devices with incorrect network settings.
- Change date and time in the device. You may have it synchronise with the date and time of the computer and set an NTP server. Also possible for a selected group of devices.
- *Identify* flashes the power LED on the device.
- Back up and restore device settings and configuration.
- Perform a firmware upgrade per device or group of devices as long as they are of the same 'device type'.
- *Capabilities...* compiles a list of all the capabilities (settings) of the selected device. On selection of more than one device, a list of overlapping capabilities is compiled. See also next page.
- Remove the device from the database. An entire network can be saved and reloaded in the SDM. Devices which are removed from the network will be labelled "Offline".

# Batch import of devices

When UPnP is disabled in routed networks, the SDM is unable to build a list of all the devices. In this case you need to import a list of devices (IP addresses). After saving the network, importing this batch file is no longer necessary.

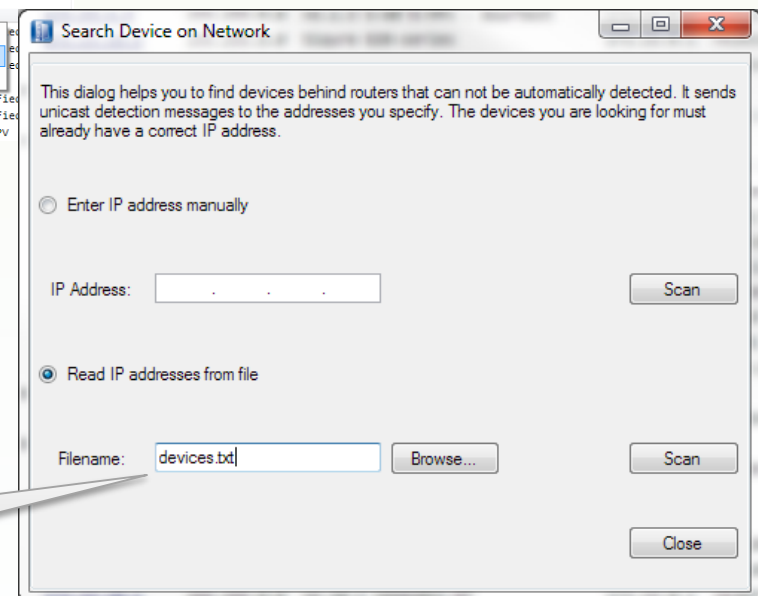


Create a text file with the IP addresses of the devices, one per line. The first lines, which do not contain an IP address, will be ignored. (For comments)



Disable  
"Automatic Detection"  
and select "Import Devices..."

Select the text file  
and press 'Scan'.



# Batch Configuration - Example

The screenshot shows the Siquira Device Manager interface. The main window displays a list of devices with columns for Device, IP Address, Netmask, Name, Gateway, FW Version, Serial no., and Slot. A selection of devices is highlighted in blue. A callout box points to the selected devices, listing their IP addresses and names. A 'Settings Tree for 4 devices' dialog is open, showing a tree structure of settings. The 'BitrateMode' setting is highlighted in red. A 'Change setting for device' dialog is also open, showing the 'BitrateMode' dropdown set to 'Constant bitrate'.

**Selected Devices:**

Device	IP Address	Netmask	Name
S-60 E-MPV	172.23.1.1	255.255.0.0	AS.1.1 S-60 E-MPV - duurttest
S-60 E-MPV	172.23.1.2	255.255.0.0	AS.1.2 S-60 E-MPV - duurttest
S-60 E-MPV	172.23.1.3	255.255.0.0	AS.1.3 S-60 E-MPV - duurttest
S-60 E-MPV	172.23.1.6	255.255.0.0	AS.1.6 S-60 E-MPV
S-60 E-MPV	172.23.1.7	255.255.0.0	AS.1.7 S-60 E-MPV (24 bit audio)
S-60 E-MPV	172.23.1.8	255.255.0.0	AS.1.8 S-60 E-MPV (24 bit audio)

**Settings Tree for 4 devices:**

- Data-2
- General
- Services
- Video-1
  - Bitmap-1
    - Encoder-1
      - ActualBitRate = kbit/s
      - ActualFrameRate = 25 frames/s
      - AvgBitRate = kbit/s
      - Bitrate = kbit/s
      - BitrateMode =**
      - Enable = True
      - FrameRateDivider = 1
      - GopLength = 25
      - MaxBitRate = kbit/s
      - MediaSubType =
      - MinBitRate = kbit/s
      - RequestIFrame =
      - RequestIFrameHoldOff = 12 frames
      - Resolution =
- RtspTx-1
- Sap
- StreamManager
- Tx-1
- Tx-2
- Tx-3
- UserDataInsertionInterval = 1000 ms

**Change setting for device:**

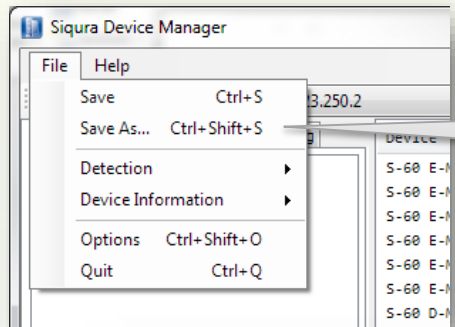
BitrateMode: Constant bitrate

OK Cancel Apply

- Select the devices in the ListView pane
- Right-click your selection, and then click **Capabilities...**
- A "Settings Tree" is built, showing all possible settings. Settings which do not apply to all selected devices are greyed out. Red parameters are "write-only".
- Select the setting which should be changed for all selected devices (for example, set "BitrateMode" to "Variable bitrate non-drop"). Click **OK**.
- All selected devices are set to VBR non-drop.

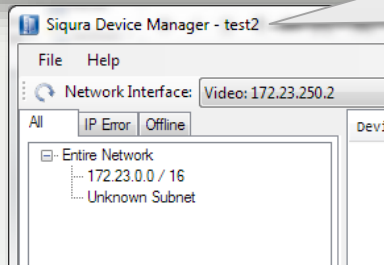


# Save and Restore a Network



- **Save:**

Save the found devices - including network settings, user name, and password - in a Network file.



- **Load an existing network file “Open...”**

Open a network file, such as “**test2.sdmdb**”, for example. The title bar shows the name of the opened network file.

- Siqura Device Manager searches for the devices listed in this network file.

✓ If devices have been added to the network, they are also listed in the **NEW** tab.

✓ If devices have been removed or are unreachable in case of network failure, these devices are also listed in the **OFFLINE** tab.



# Backup & Restore

- Make sure to save the network
- To back up: Select devices, and (on the shortcut menu) select Backup Settings .... The configuration settings are saved to a file.
- To restore: Select devices, and (on the shortcut menu) select Restore Settings .... For devices for which a backup is found, a restore is performed. The restore uses the IP address of the device.
- To replace a 'faulty' device: Install the new device. Copy the IP settings, user name, and password from the faulty device. Select Restore Settings ....

# Release Notes

## DEVICE COMPATIBILITY v1.8.1.

- C-5x and S-5x series video encoders
- C-6x and S-6x series video encoders and S-60 D decoder
- C620 and S620 video encoders
- A-80 and V-30 E
- HD2x , HD6x, MD2x, and MD6x series dome IP cameras
- MSD62x and HSD62x series dome cameras
- BC/FD 6x series box or fixed dome IP cameras
- BC620 and BC840 series box IP cameras
- BC820, FD820, IFD820, and HSD820 series 1080p HD IP cameras
- EVE ONE, EVE FOUR, EVE 4x4
- 1000- and 1100-series cameras
- Limited support\* for:
- C-10, C-20, C-23 encoders and decoders
- C-4x and S-4x series video encoders and decoders
- BC2x and FD2x series box and fixed dome cameras

*\*Supported functions: Detection in local subnet, Open webpage. For some devices: Change IP address.*

## KNOWN ISSUES

- Siquira S620 D is not supported
- Simultaneous use of older MX/IP-based Siquira software interferes with the use of Siquira Device Manager.
- Changing the network interface keeps the devices from the old interface dangling as 'offline'.
- A device may be listed as 'IP Error' instead of 'Offline' and vice versa.
- Batch configuration does not work for 1000- and 1100-series cameras.

## VERSION HISTORY

- 1.4.1 - First commercial release (17-09-2012)
- 1.5.2 - Added import of list of IP addresses (22-01-2013)
- 1.6.0 - Added EVE encoders and DST support (01-02-2014)
- 1.7.0 - Added progress bar for import and scan (17-06-2014)
- 1.8.0 - Added 1000- and 1100-series cameras (17-05-2016)
- 1.8.1 - Added new .NET redistributable (19-05-2016)

© Siquira B.V. 2016  
Version 1.6 (120110-1.6)  
SDM 1.8.1 – QSG (PPT10)