

IP Camera Quick Guide

IP Camera 설명서

This is a megapixel network camera which uses a **SONY** Progressive Scan Exmor CMOS Sensor.
Built-in triple codec(H.264, MPEG4 and MJPEG) and streaming server, the advantage of this camera allow you to monitor real time image from a remote location via internet.
This camera supports both static IP and Dynamic IP and it also supports latestes Onvif.

<Caution>

Software, server and service may be changed according to policy or may be stopped without prior notification.

Appearance, function and specification may be changed without prior notification. Our company assumes no responsibility for visible or invisible loss resulted from changes in policy or products.

<경고>

software 및 server 와 service는 정책 변경이나 기간 만료로 인하여 변경 되어 질 수 있습니다.

외관 혹은 제품 성능은 별도 통보 없이 변경되어질 수 있으며 펌사(당사)는 정책 변경이나 제품변경으로 인한 유무형 손실에 대해서 책임을 지지 않습니다.

<警告>

software 및 server와 service 因政策变化或到期可能被改变。

外观, 性能和功能可以在不事先通知而变动。

我公司对政策变化或产品变更而造成的有无形损失不承担赔偿责任。

Safety Cautions

1. This camera may be damaged by electrical and physical shock.
2. Use regulated 12V DC power supply.
3. In case the unit fails, DO NOT try to disassemble the product. Contact or consult the distributor or an authorized technician for after-sales service. Warranty void for the product disassembled without an authorization from the distributor or an authorized technician.
4. All responsibility by using this unit is on the user.
5. In case it is installed at high location, be sure to mount securely to prevent the unit from falling below.

If the product is to be put out of operation definitively, take it to a local recycling plant for a disposal which is not harmful to the environment.

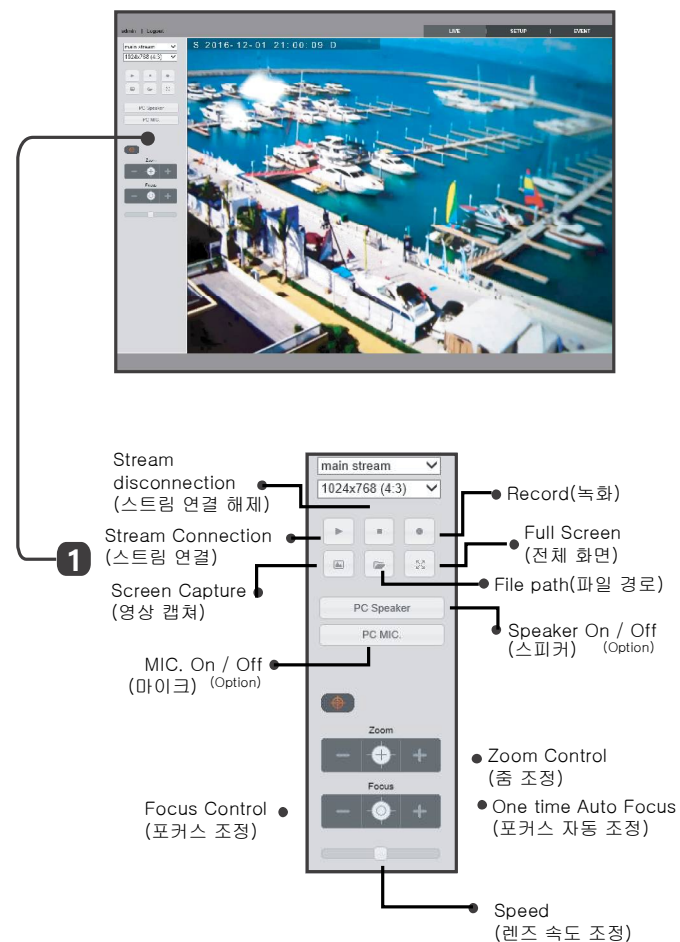
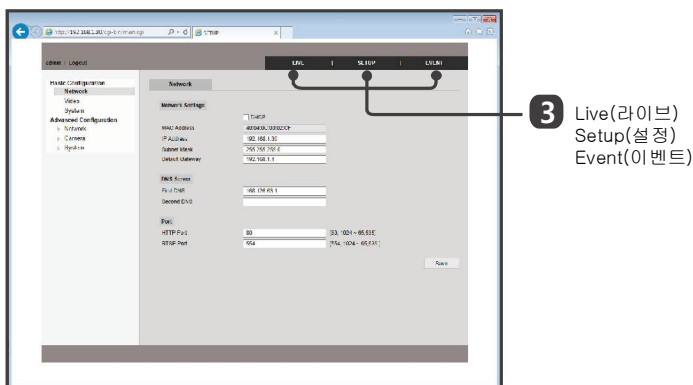
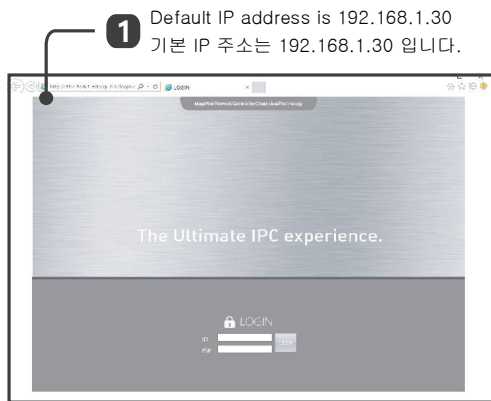
Please read the instruction carefully for correct use of the product and preserve it for reference purposes. This specification is subject to change without any prior notice to improve the quality.

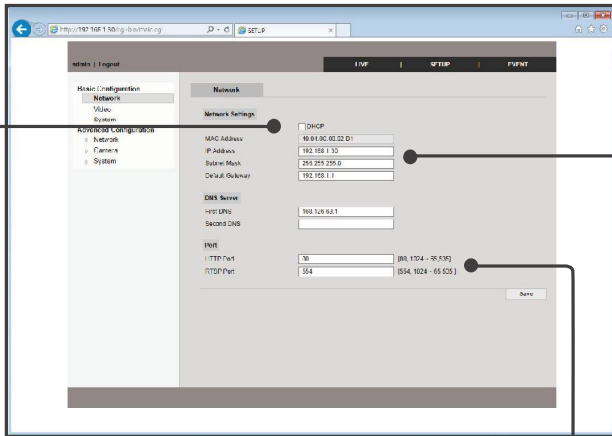
카메라를 사용하기 전에 사용 설명서에 포함된 안전 고지 사항 및 중요 정보를 확인 하십시오.
Read the safety notice and important tips in the included manuals before using your camera

IPC Quick guide

Accessing the IPC & Log in (연결 및 로그인) 2

Live Video (실시간 영상) 3





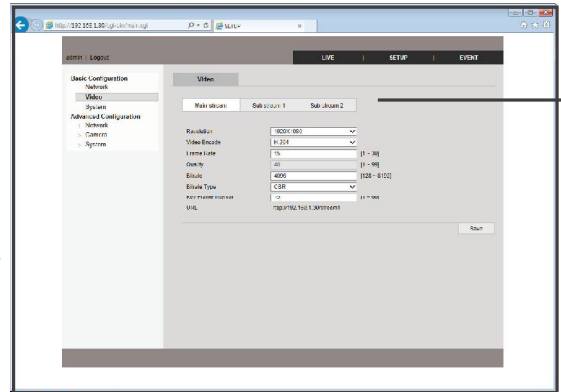
Use DHCP(Dynamic Host Configuration Protocol)
(DHCP 사용)

Port Change
(포트 변경)

IP address Change
(IP 주소 변경)

(Default IP Address is 192.168.1.30)
(기본 IP 주소는 192.168.1.30 입니다)

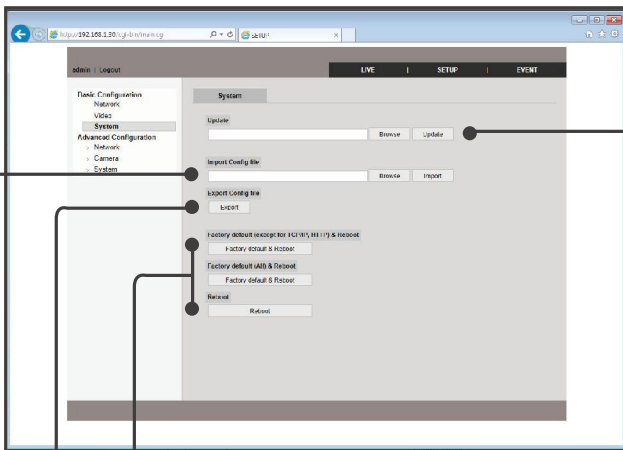
This Network camera supports multiple streams simultaneously
(이 카메라는 다양한 스트림 지원 가능합니다.)



Stream selection
(스트림 선택)

RTSP address
(RTSP 주소)

Video settings for streams
(비디오 셋팅)



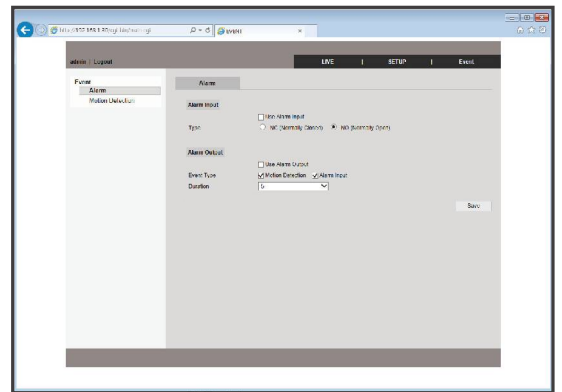
Update F/W
(펌웨어 업데이트)

Factory set & Reset
(공장 초기화 & 리셋)

Export all parameters for device and
user defined scripts
(사용자 정의 Data 추출)

Update configuration file
(사용자 정의 Data 업데이트)

Alarm In / Out Setting (알람 입출력 설정)



Motion detection Setting
(움직임 감지 설정)

